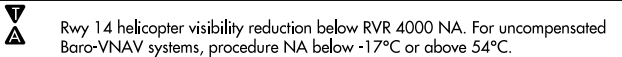


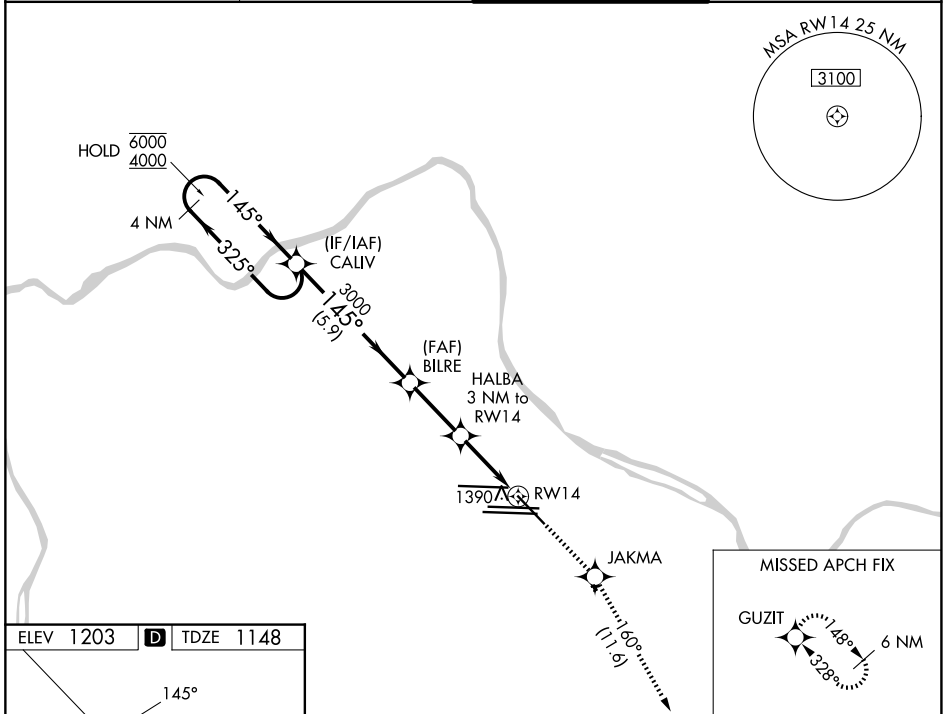
WAAS CH 77526 W14A	APP CRS 145°	Rwy Ldg TDZE Apt Elev	7366 1148 1203
--	------------------------	-----------------------------	---

RNAV (GPS) RWY 14

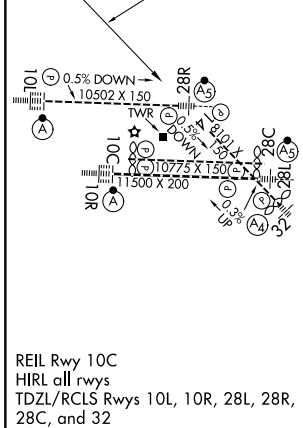
PITTSBURGH INTL (PIT)

RNP APCH - GPS.	MISSED APPROACH: Climb to 4000 direct JAKMA and on track 160° to GUZIT and hold.
	

D-ATIS 127.25	PITTSBURGH APP CON 123.95 360.8	PITTSBURGH TOWER 128.3 291.7	GND CON SOUTH 121.9 348.6 NORTH 127.8 348.6
-------------------------	---	--	---



ELEV 1203	D	TDZE 1148
-----------	----------	-----------



VGSI and RNAV glidepath not coincident (VGSI Angle 3.00/TCH 67').			
4000	JAKMA	GUZIT	
↑	✧	tr 160°	✧
Holding Pattern CALIV			
6000 ← 325°	145° →	145°	
4000	3000	2160	
GP 3.00° TCH 60			
← 5.9 NM → 2.6 NM → 1.7 NM → 1.3 NM →			
REIL Rwy 10C	HALBA 3 NM to RWY 14		1.3 NM to RWY 14
HIRL all rwy	RWY 14		
TDZL/RCLS Rwy 10L, 10R, 28L, 28R, 28C, and 32			
CATEGORY	A	B	C
LPV DA	1655-1 3/8 507 (500-1 3/8)		
LNAV/VNAV DA	1654-1 3/8 506 (500-1 3/8)		
LNAV MDA	1640/55	492 (500-1)	1640-1 3/8 492 (500-1 3/8)
CIRCLING	1700-1	497 (500-1)	1880-2 677 (700-2) 1880-2 1/4 677 (700-2 1/4)

NE-4, 14 MAY 2026 to 11 JUN 2026

NE-4, 14 MAY 2026 to 11 JUN 2026