


# RNAV (RNP) Z RWY 28L

PITTSBURGH INTL (PIT)

APP CRS	Rwy Ldg	<b>11500</b>
<b>281°</b>	TDZE	<b>1125</b>
	Apt Elev	<b>1203</b>

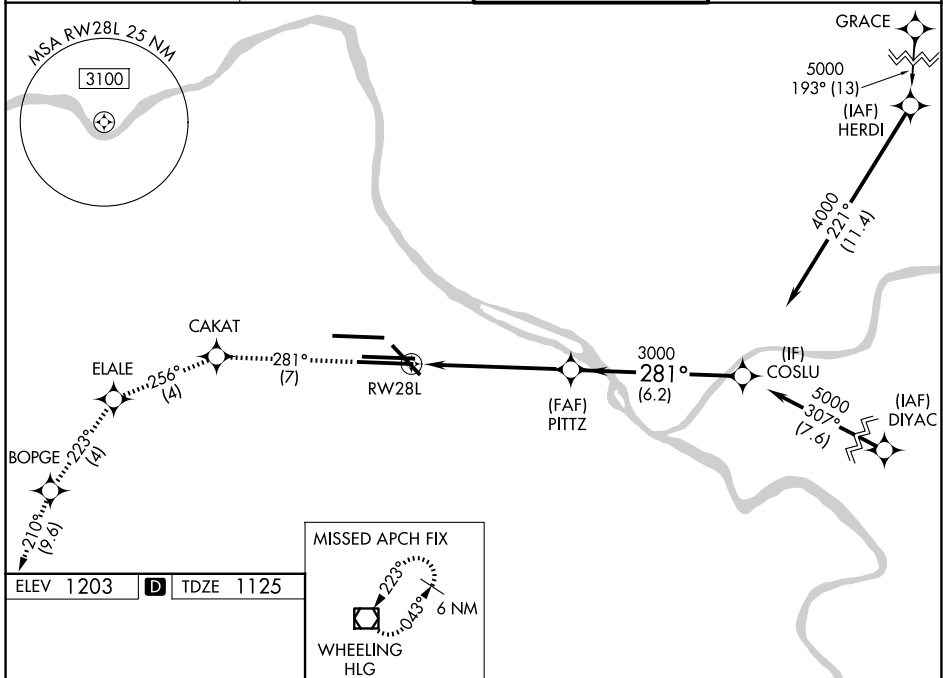
RNP AR APCH - GPS.

▼ For uncompensated Baro-VNAV systems, procedure NA below -18°C or above 54°C. Simultaneous approach authorized. For inop ALS, increase RNP 0.13 all Cats visibility to RVR 6000.

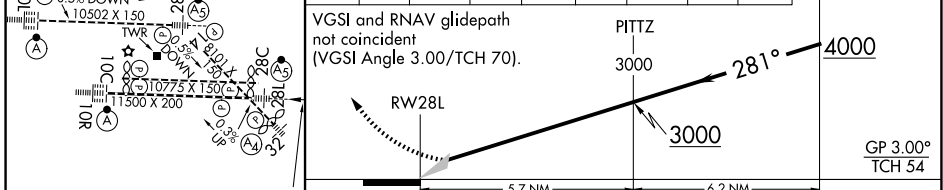
MALSR 

MISSED APPROACH: Climb to 4000 on track 281° to CAKAT and track 256° to ELALE and track 223° to BOPGE and track 210° to HLG VOR/DME and hold.

D-ATIS <b>127.25</b>	PITTSBURGH APP CON <b>123.95 360.8</b>	PITTSBURGH TOWER <b>128.3 291.7</b>	GND CON SOUTH <b>121.9 348.6</b> NORTH <b>127.8 348.6</b>
-------------------------	---	--	---



4000	↑	tr 281°	◆ CAKAT	tr 256°	◆ ELALE	tr 223°	◆ BOPGE	tr 210°	◆ HLG	□ COSLU
------	---	---------	---------	---------	---------	---------	---------	---------	-------	---------



CATEGORY	A	B	C	D
RNP 0.13 DA		1529/40	404 (400-¾)	
RNP 0.30 DA		1579/45	454 (400-¾)	

**AUTHORIZATION REQUIRED**

NE-4, 14 MAY 2026 to 11 JUN 2026

NE-4, 14 MAY 2026 to 11 JUN 2026