

APP CRS 325°	Rwy Ldg TDZE Apt Elev	7466 1124 1203
------------------------	-----------------------------	---

RNAV (RNP) Z RWY 32

PITTSBURGH INTL (PIT)

RNP AR APCH - GPS.

▼ For uncompensated Baro-VNAV systems, procedure NA below -18°C (0°F) or above 54°C (130°F).

MALS

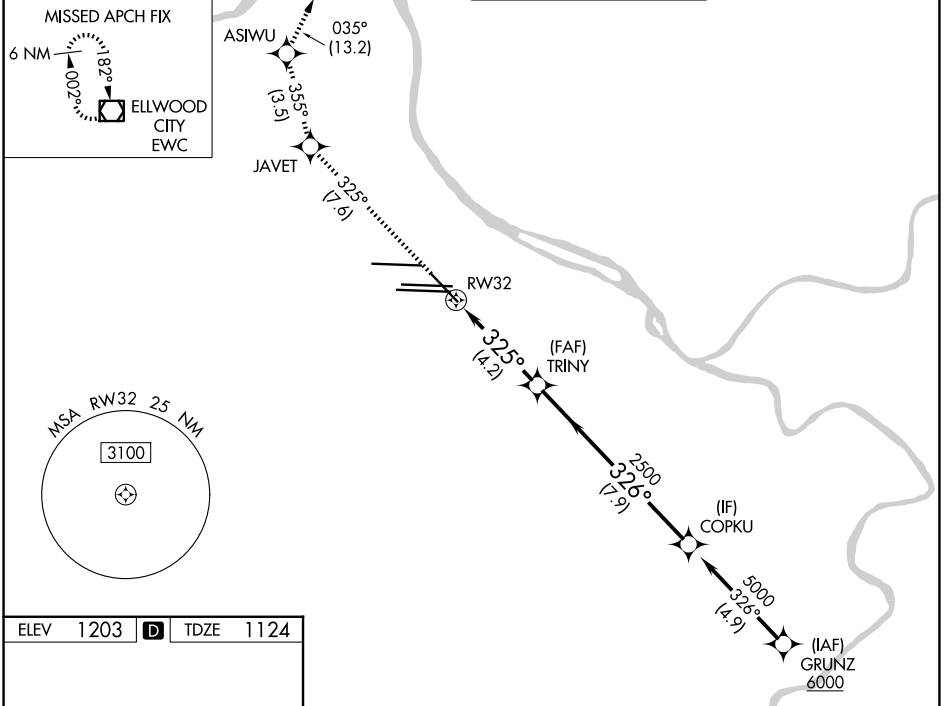
MISSED APPROACH: Climb to 4000 on track 325° to JAVET and track 355° to ASIWU and track 035° to EWC VOR/DME and hold.

D-ATIS
127.25

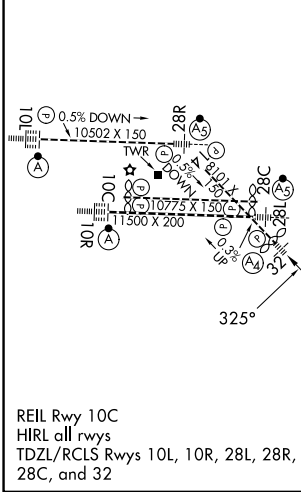
PITTSBURGH APP CON
123.95 360.8

PITTSBURGH TOWER
128.3 291.7

GND CON
SOUTH **121.9 348.6**
NORTH **127.8 348.6**



ELEV 1203	D	TDZE 1124
-----------	----------	-----------



4000	JAVET	tr 355°	ASIWU	tr 035°	EWC
fr 325°					
VGSI and RNAV glidepath not coincident (VGSI Angle 3.00/TCH 72).					
	RW32	TRINY	COPKU		
		2500	5000		
		325°	326°		
		2500			GP 3.00° TCH 37
		4.2 NM	7.9 NM		
CATEGORY	A	B	C	D	
RNP 0.30 DA	1503/40		379 (300-¾)		
AUTHORIZATION REQUIRED					

NE-4, 14 MAY 2026 to 11 JUN 2026

NE-4, 14 MAY 2026 to 11 JUN 2026