

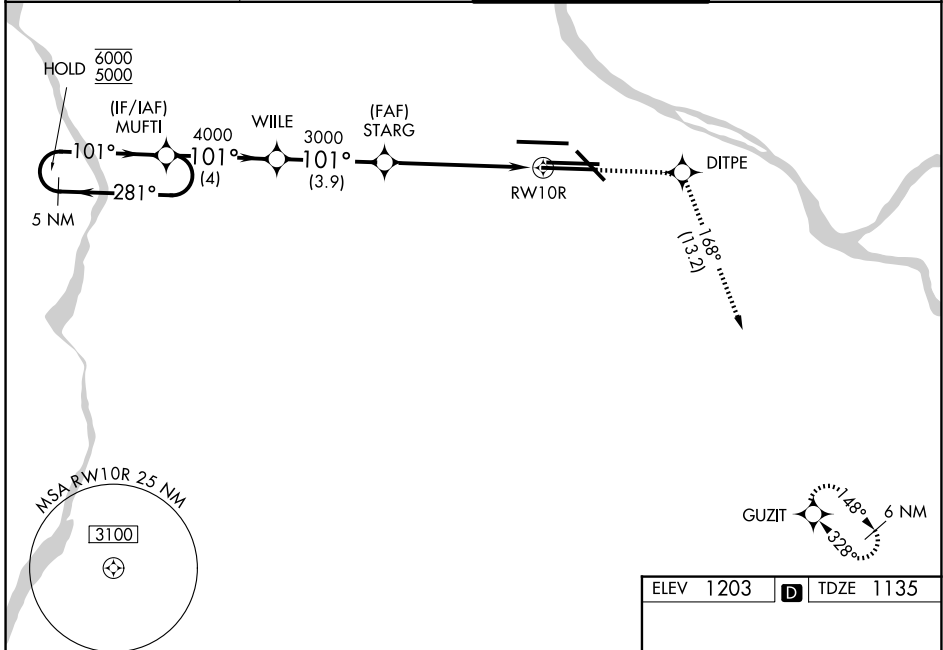
WAAS CH <b>86226</b> <b>W10D</b>	APP CRS <b>101°</b>	Rwy Ldg TDZE <b>1135</b> Apt Elev <b>1203</b>
--	------------------------	---

# RNAV (GPS) Y RWY 10R

PITTSBURGH INTL (PIT)

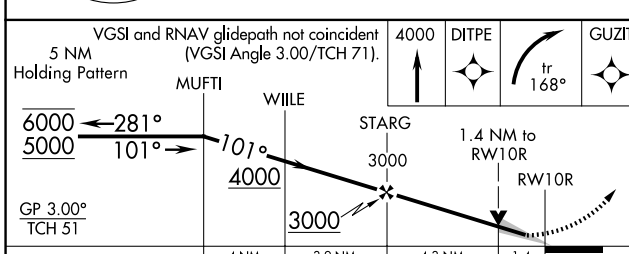
RNP APCH - GPS.	ALSF-2 	MISSED APPROACH: Climb to 4000 direct DITPE and right turn on track 168° to GUZIT and hold.
For uncompensated Baro-VNAV systems, LNAV/VNAV NA below -17°C or above 54°C. Simultaneous approach authorized. LNAV procedure NA during simultaneous operations. Use of FD or AP required during simultaneous operations.		

D-ATIS <b>127.25</b>	PITTSBURGH APP CON <b>123.95 360.8</b>	PITTSBURGH TOWER <b>128.3 291.7</b>	GND CON SOUTH <b>121.9 348.6</b> NORTH <b>127.8 348.6</b>
-------------------------	---	--	---



NE-4, 14 MAY 2026 to 11 JUN 2026

NE-4, 14 MAY 2026 to 11 JUN 2026



CATEGORY	A	B	C	D
LPV DA		1335/18	200 (200-1/2)	
LNAV/VNAV DA		1658/55	523 (500-1)	
LNAV MDA	1660/24	525 (500-1/2)	1660/55	525 (500-1)
CIRCLING	1700-1	497 (500-1)	1880-2 677 (700-2)	1880-2 1/4 677 (700-2 1/4)

ELEV 1203	<b>D</b>	TDZE 1135
-----------	----------	-----------

REIL Rwy 10C  
HIRL all rws  
TDZL/RCLS Rws 10L, 10R, 28L, 28R, 28C, and 32