

WAAS CH 45527 W28A	APP CRS 281°	Rwy Ldg TDZE Apt Elev	9708 1134 1203
--	------------------------	-----------------------------	---

RNAV (GPS) Y RWY 28C

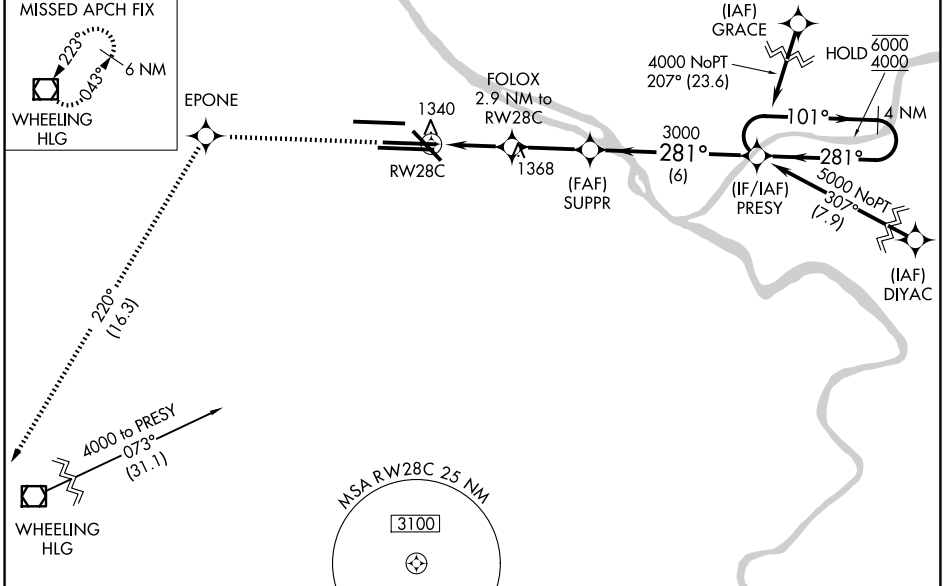
PITTSBURGH INTL (PIT')

RNP APCH - GPS.

⚠ Circling Rwy 14 NA at night. Rwy 28C helicopter visibility reduction below RVR 4000 NA.
⚠ For uncompensated Baro-VNAV systems, LNAV/VNAV NA below -18°C or above 54°C.
 Simultaneous approach authorized. LNAV procedure NA during simultaneous operations.
 Use of FD or AP required during simultaneous operations.

MISSED APPROACH:
 Climb to 4000 direct
 EPONE and on track
 220° to HLG
 VOR/DME and hold.

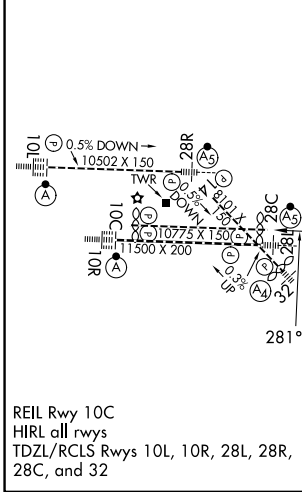
D-ATIS 127.25	PITTSBURGH APP CON 123.95 360.8	PITTSBURGH TOWER 128.3 291.7	GND CON SOUTH 121.9 348.6 NORTH 127.8 348.6
-------------------------	---	--	---



NE-4, 14 MAY 2026 to 11 JUN 2026

NE-4, 14 MAY 2026 to 11 JUN 2026

ELEV 1203	D	TDZE 1134
------------------	----------	------------------



4000	EPONE	HLG	VGSi and RNAV glidepath not coincident (VGSi Angle 3.00/TCH 43).	
↑	tr 220°	⬜	4 NM Holding Pattern	
FOLOX 2.9 NM to RWY 28C		SUPPR	PRESY	6000 4000
RWY 28C		2100	3000	GP 3.00° TCH 50
1.3 NM to RWY 28C		101° → ← 281°		
1.6		6 NM		
CATEGORY	A	B	C	D
LPV DA	1384/40		250 (200-¾)	
LNAV/VNAV DA	1544/60		410 (400-1¼)	
LNAV MDA	1600/55	466 (400-1)	1600-1⅓	466 (400-1⅓)
CIRCLING	1700-1	497 (500-1)	1880-2 677 (700-2)	1880-2¼ 677 (700-2¼)