

LOC/DME I-ARK 110.95 Chan 46(Y)	APP CRS 185°	Rwy Ldg 9001 TDZE 90 Apt Elev 96
--	------------------------	---

ILS RWY 17L (SA CAT I)

ORLANDO INTL (MCO)

RNAV 1-DME/DME/IRU or GPS or RADAR required for procedure entry.
DME or RADAR required.

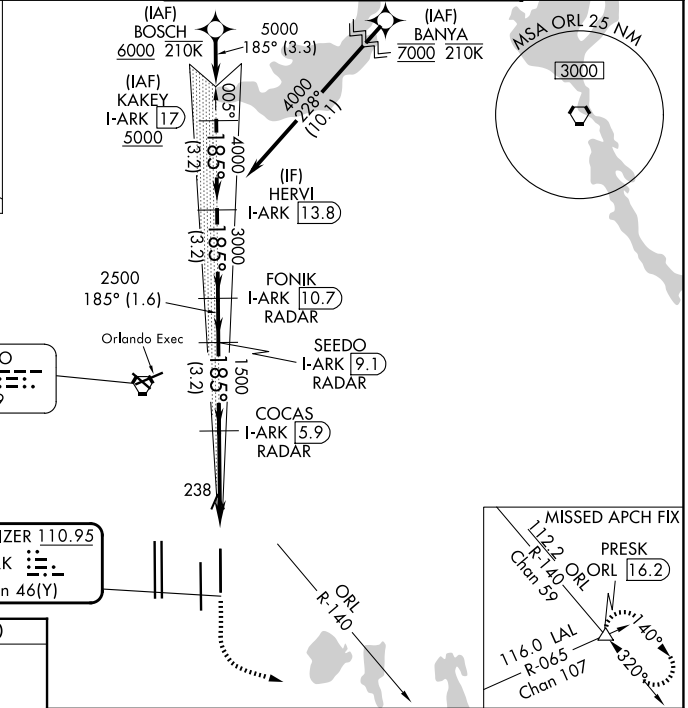
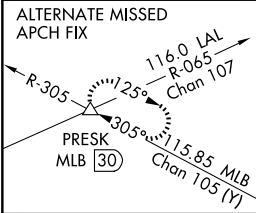
ALSF-2

MISSED APPROACH: Climb to 500 then
climbing left turn to 3000 on heading 100°
and ORL VORTAC R-140 to PRESK INT/ORL
16.2 DME and hold, continue climb-in-
hold to 3000.

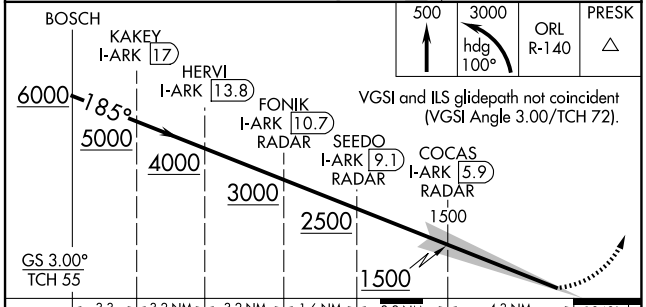
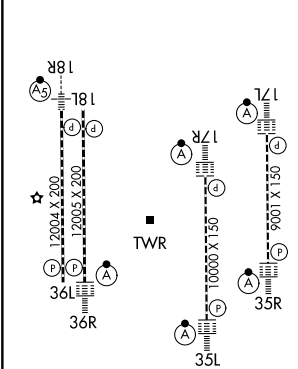
⚠ Bright lights on highway midway between Rwy 17L and Rwy 17R may
be mistaken for runway lights. Simultaneous approach authorized.
Requires specific OPSPEC, MSPEC, or LOA approval.



D-ATIS 121.25	ORLANDO APP CON 124.8 307.0	ORLANDO TOWER 118.45 253.5 (17L/35R, 17R/35L) 124.3 253.5 (18L/36R, 18R/36L)	GND CON 126.4 (E) 121.8 (W)
-------------------------	---------------------------------------	--	---



ELEV 96	D	TDZE 90
---------	---	---------



CATEGORY	A	B	C	D
S-ILS 17L	RA 145/14 150 DA 240			

**SA CATEGORY I ILS - SPECIAL AIRCREW
& AIRCRAFT CERTIFICATION REQUIRED**