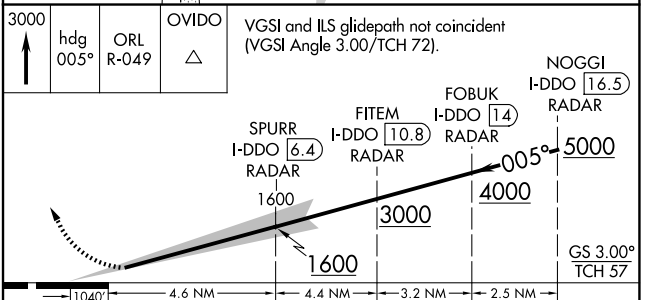
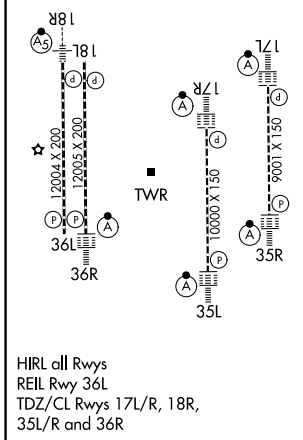
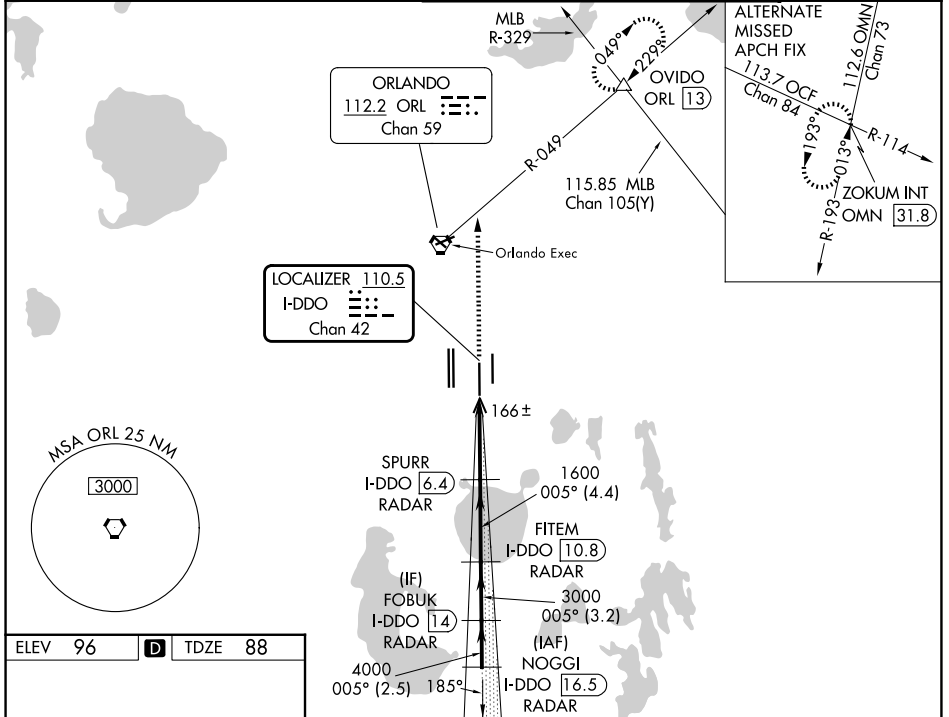


LOC/DME I-DDO <b>110.5</b> Chan <b>42</b>	APP CRS <b>005°</b>	Rwy Ldg <b>10000</b> TDZE <b>88</b> Apt Elev <b>96</b>
---	------------------------	--

# ILS RWY 35L (CAT II & III)

ORLANDO INTL (MCO)

RADAR required for procedure entry. DME or RADAR required.		ALSF-2 	MISSED APPROACH: Climb to 3000 on heading 005° and ORL VORTAC R-049 to OVIDO INT/ORL 13 DME and hold.
D-ATIS <b>121.25</b>	ORLANDO APP CON <b>124.8 307.0</b>	ORLANDO TOWER <b>118.45 253.5</b> (17L/35R, 17R/35L) <b>124.3 253.5</b> (18L/36R, 18R/36L)	GND CON <b>126.4</b> (E) <b>121.8</b> (W)



CATEGORY	A	B	C	D
S-ILS 35L	CAT II RA 106/12 100 DA 188			
S-ILS 35L	CAT III RVR 06			

**CATEGORY II & III ILS - SPECIAL AIRCREW & AIRCRAFT CERTIFICATION REQUIRED**

SE-3, 14 MAY 2026 to 11 JUN 2026

SE-3, 14 MAY 2026 to 11 JUN 2026