

# ILS or LOC RWY 17L

ORLANDO INTL (MCO)

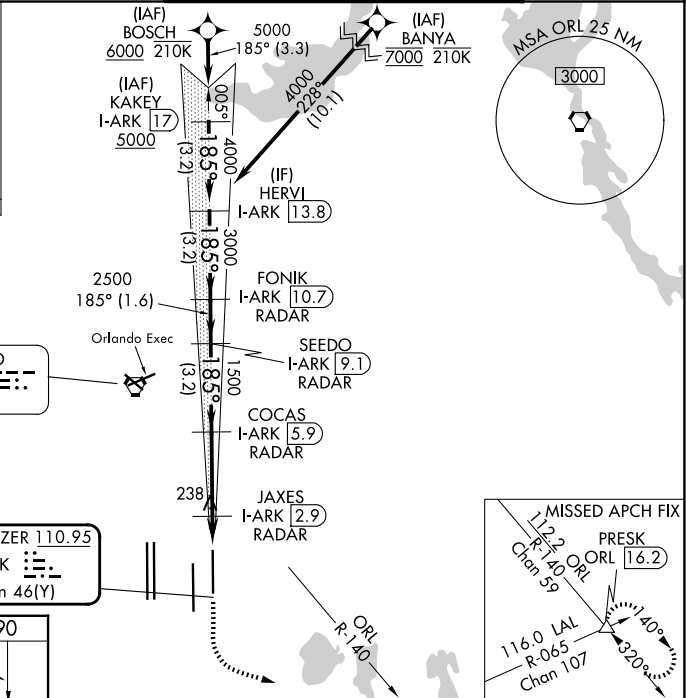
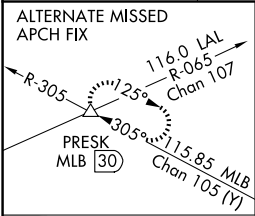
LOC/DME I-ARK <b>110.95</b> Chan 46(Y)	APP CRS <b>185°</b>	Rwy Ldg <b>9001</b> TDZE <b>90</b> Apt Elev <b>96</b>
--	------------------------	---

RNAV 1-DME/DME/IRU or GPS or RADAR required for procedure entry. DME or RADAR required.

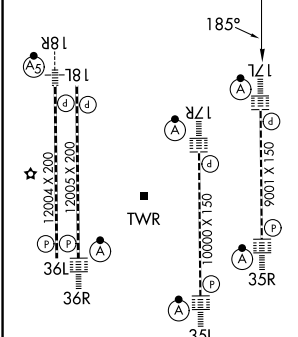
ALSF-2  
MISSED APPROACH: Climb to 500 then climbing left turn to 3000 on heading 100° and ORL VORTAC R-140 to PRESK INT/ORL 16.2 DME and hold, continue climb-in-hold to 3000.

⚠ Bright lights on highway midway between Rwy 17L and Rwy 17R may be mistaken for runway lights. Simultaneous approach authorized. For inop ALS, increase S-LOC 17L Cats C/D visibility to RVR 6000.

D-ATIS <b>121.25</b>	ORLANDO APP CON <b>124.8 307.0</b>	ORLANDO TOWER <b>118.45 253.5</b> <b>124.3 253.5</b> (17L/35R, 17R/35L) (18L/36R, 18R/36L)	GND CON <b>126.4 (E)</b> <b>121.8 (W)</b>
-------------------------	---------------------------------------	--	---



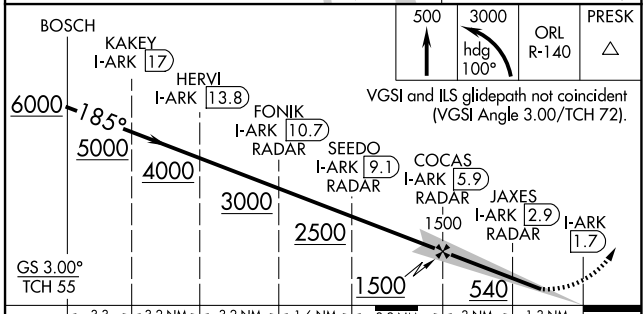
ELEV 96	D	TDZE 90
---------	---	---------



HIRL all Rwy 36L  
REIL Rwy 36L  
TDZ/CL Rwy 17L/R, 18R, 35L/R and 36R

FAF to MAP 4.3 NM

Knots	60	90	120	150	180
Min:Sec	4:18	2:52	2:09	1:43	1:26



CATEGORY	A	B	C	D
S-ILS 17L	290/18 200 (200-½)			
S-LOC 17L	500/24	410 (500-½)	500/40	410 (500-¾)
CIRCLING	740-1	644 (700-1)	740-1¾	644 (700-2)

SE-3, 14 MAY 2026 to 11 JUN 2026

SE-3, 14 MAY 2026 to 11 JUN 2026