

# ILS or LOC RWY 36R

ORLANDO INTL (MCO)

LOC/DME I-OJP <b>110.7</b> Chan <b>44</b>	APP CRS <b>005°</b>	Rwy Ldg <b>11601</b> TDZE <b>92</b> Apt Elev <b>96</b>
---	------------------------	--

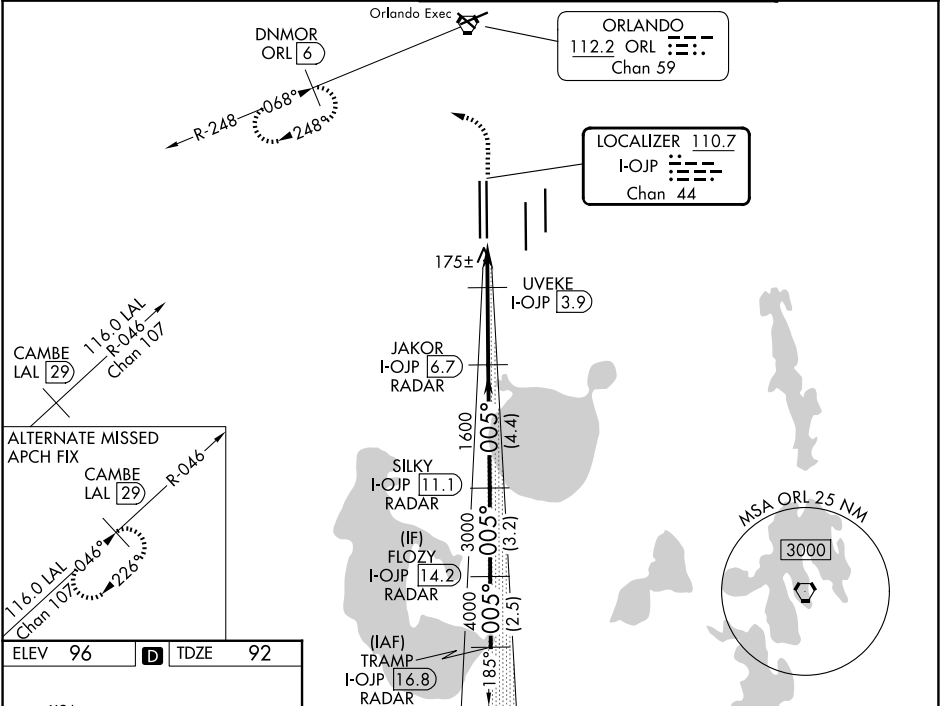
RADAR required for procedure entry. DME or RADAR required.

Simultaneous approach authorized.

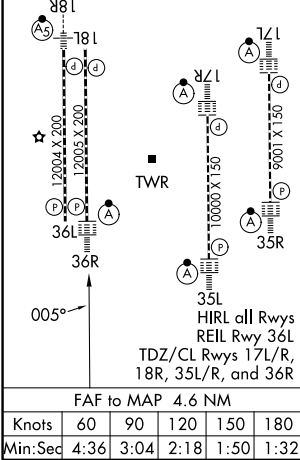
ALSF-2

MISSED APPROACH: Climb to 500 then climbing left turn to 3000 on heading 309° and ORL VORTAC R-248 to DNMOR/ORL 6 DME and hold, continue climb-in-hold to 3000.

D-ATIS <b>121.25</b>	ORLANDO APP CON <b>124.8 307.0</b>	ORLANDO TOWER <b>118.45 253.5</b> (17L/35R, 17R/35L) <b>124.3 253.5</b> (18L/36R, 18R/36L)	GND CON <b>126.4</b> (E) <b>121.8</b> (W)
-------------------------	---------------------------------------	--	---



ELEV 96	<b>D</b>	TDZE 92
---------	----------	---------



CATEGORY	A	B	C	D
S-ILS 36R	292/18 200 (200-½)			
S-LOC 36R	540/24	448 (500-½)	540/45	448 (500-¾)
CIRCLING	740-1	644 (700-1)	740-1¾ 644 (700-1¾)	740-2 644 (700-2)
UVEKE FIX MINIMUMS (DME REQUIRED)				
S-LOC 36R	440/24	348 (400-½)	440/30	348 (400-¾)
CIRCLING	740-1	644 (700-1)	740-1¾ 644 (700-1¾)	740-2 644 (700-2)

FAF to MAP 4.6 NM					
Knots	60	90	120	150	180
Min:Sec	4:36	3:04	2:18	1:50	1:32

SE-3, 14 MAY 2026 to 11 JUN 2026

SE-3, 14 MAY 2026 to 11 JUN 2026