

MINNIE SIX ARRIVAL
(MINNIE.MINNIE6) 20FEB25

(MINNIE.MINNIE6) 25219
MINNIE SIX ARRIVAL

RADAR required.

ORLANDO APP CON
134.05 339.8
ISM ATIS
128.775
LEE ATIS
134.325
MCO D-ATIS ARR
121.25
ORL ATIS
127.25
SFB ATIS
125.975
TIX ATIS
120.625

OCALA
113.7 OCF
Chan 84

ORLANDO
112.2 ORL
Chan 59

NOTE: LEESBURG INTL: Expect RADAR vectors to airport after UNITY.
NOTE: All other airports: Expect RADAR vectors to final approach course after UNITY.

**ANDRO
JET VERTICAL NAVIGATION
PLANNING INFORMATION**

Orlando Intl Landing South: Expect clearance to cross at 13000.
Orlando Intl Landing North: Expect clearance to cross at 13000 and 250K.

ST PETERSBURG
116.4 PIE
Chan 111

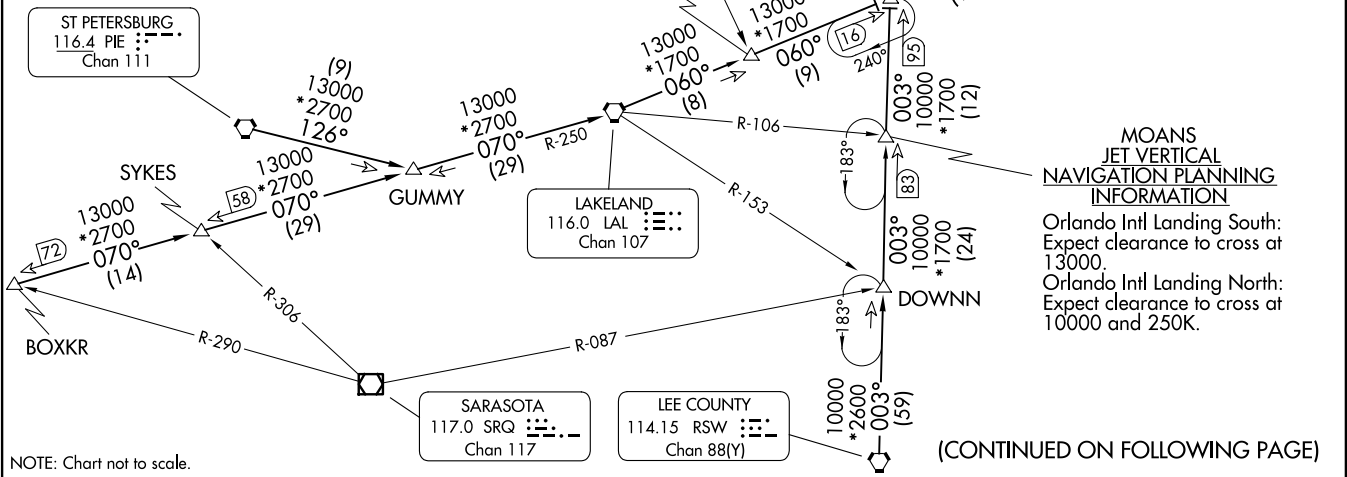
LAKELAND
116.0 LAL
Chan 107

SARASOTA
117.0 SRQ
Chan 117

LEE COUNTY
114.15 RSW
Chan 88(Y)

**MOANS
JET VERTICAL NAVIGATION
PLANNING INFORMATION**

Orlando Intl Landing South: Expect clearance to cross at 13000.
Orlando Intl Landing North: Expect clearance to cross at 10000 and 250K.



NOTE: Chart not to scale.

(CONTINUED ON FOLLOWING PAGE)

ORLANDO, FLORIDA

ORLANDO, FLORIDA

AL-571 (FAA)

MINEE SIX ARRIVAL

ORLANDO, FLORIDA

ARRIVAL ROUTE DESCRIPTION

BOXKR TRANSITION (BOXKR.MINEE6): From over BOXKR on LAL R-250 to LAL VORTAC, then on LAL R-060 to MINEE. Thence. . . .

LEE COUNTY TRANSITION (RSW.MINEE6): From over RSW VORTAC on RSW R-003 to MINEE. Thence. . . .

ST PETERSBURG TRANSITION (PIE.MINEE6): From over PIE VORTAC on PIE R-126 to GUMMY, then on LAL R-250 to LAL VORTAC, then on LAL R-060 to MINEE. Thence. . . .

. . . . from over MINEE on LAL R-060 to UNITY, then on ORL R-200 to ORL VORTAC.

SE-3, 14 MAY 2026 to 11 JUN 2026

SE-3, 14 MAY 2026 to 11 JUN 2026