

MUNGI ONE ARRIVAL (RNAV) Transition Routes

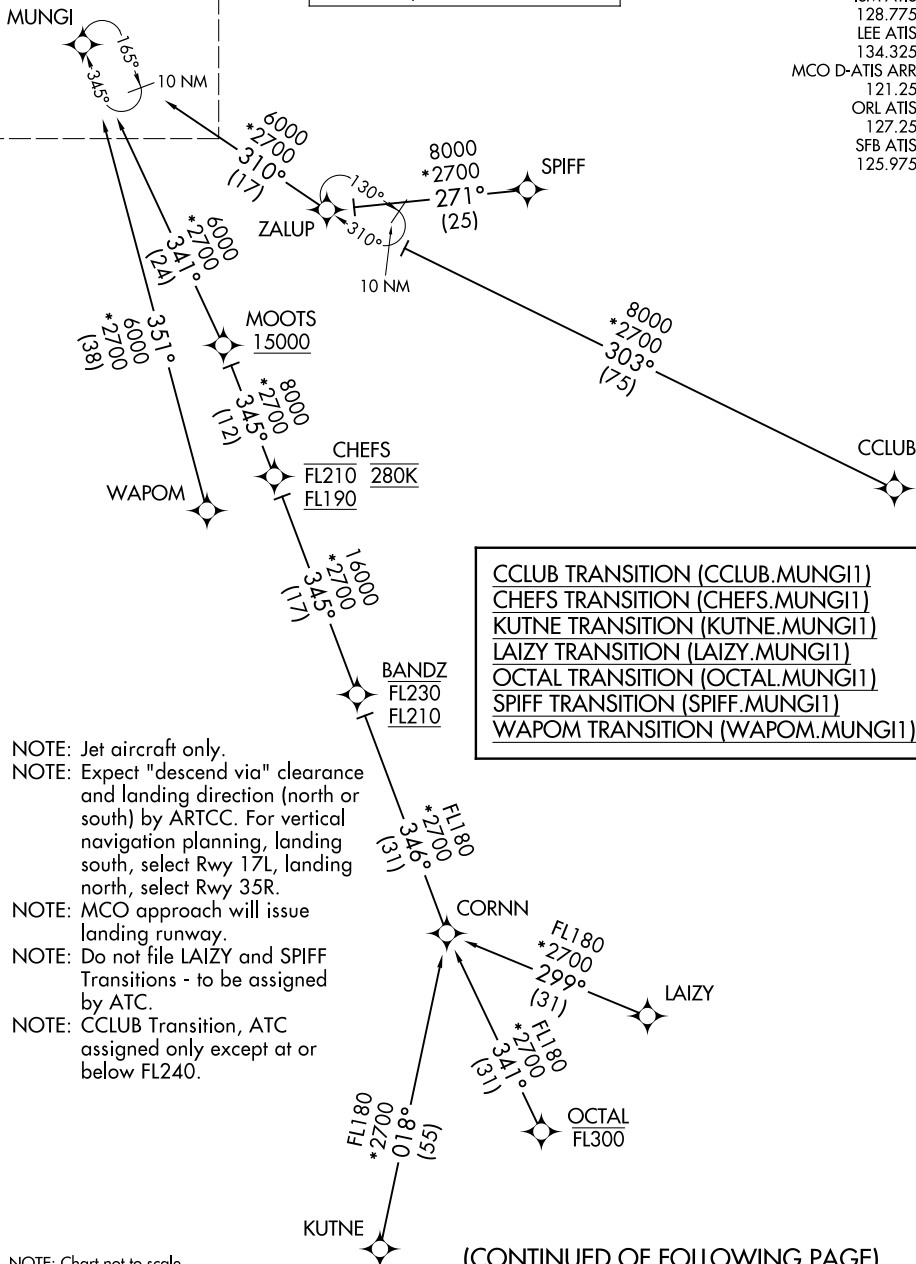
ORLANDO, FLORIDA

See following page for arrival route.

RNAV 1 - DME/DME/IRU or GPS.

RADAR required.

ORLANDO APP CON
 128.375 338.2
 ISM ATIS
 128.775
 LEE ATIS
 134.325
 MCO D-ATIS ARR
 121.25
 ORL ATIS
 127.25
 SFB ATIS
 125.975



CCLUB TRANSITION (CCLUB.MUNGI1)
 CHEFS TRANSITION (CHEFS.MUNGI1)
 KUTNE TRANSITION (KUTNE.MUNGI1)
 LAIZY TRANSITION (LAIZY.MUNGI1)
 OCTAL TRANSITION (OCTAL.MUNGI1)
 SPIFF TRANSITION (SPIFF.MUNGI1)
 WAPOM TRANSITION (WAPOM.MUNGI1)

- NOTE: Jet aircraft only.
- NOTE: Expect "descend via" clearance and landing direction (north or south) by ARTCC. For vertical navigation planning, landing south, select Rwy 17L, landing north, select Rwy 35R.
- NOTE: MCO approach will issue landing runway.
- NOTE: Do not file LAIZY and SPIFF Transitions - to be assigned by ATC.
- NOTE: CCLUB Transition, ATC assigned only except at or below FL240.

NOTE: Chart not to scale.

(CONTINUED OF FOLLOWING PAGE)

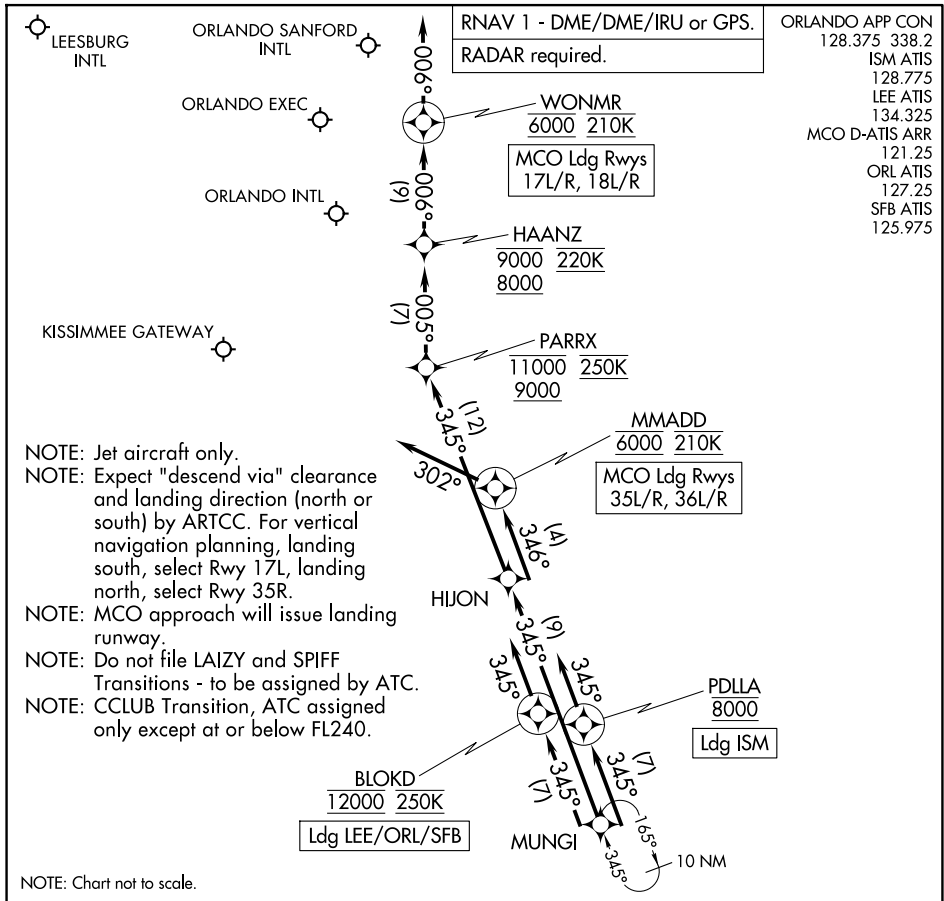
SE-3, 14 MAY 2026 to 11 JUN 2026

SE-3, 14 MAY 2026 to 11 JUN 2026

MUNGI ONE ARRIVAL (RNAV)

Arrival Routes

ORLANDO, FLORIDA



SE-3, 14 MAY 2026 to 11 JUN 2026

SE-3, 14 MAY 2026 to 11 JUN 2026

ARRIVAL ROUTE DESCRIPTION

MCO: From MUNG1 on track 345° to HIJON.

LANDING MCO RUNWAYS 17L/R, 18L/R: From HIJON on track 345° to cross PARRX between 9000 and 11000 and at 250K, then on track 005° to cross HAANZ between 8000 and 9000 and at 220K, then on track 006° to cross WONMR at 6000 and at 210K, then on track 006°. Expect RADAR vectors to final approach course.

LANDING MCO RUNWAYS 35L/R, 36L/R: From HIJON on track 345° to cross MMADD at 6000 and at 210K, then on track 302°. Expect RADAR vectors to final approach course.

LANDING ISM: From MUNG1 on track 345° to cross PDLLA at 8000, then on track 345°. Expect RADAR vectors to final approach course.

LANDING LEE/SFB/ORL: From MUNG1 on track 345° to cross BLOKD at 12000 and at 250K, then on track 345°. Expect RADAR vectors to final approach course.

MUNGI ONE ARRIVAL (RNAV)

Arrival Routes

ORLANDO, FLORIDA