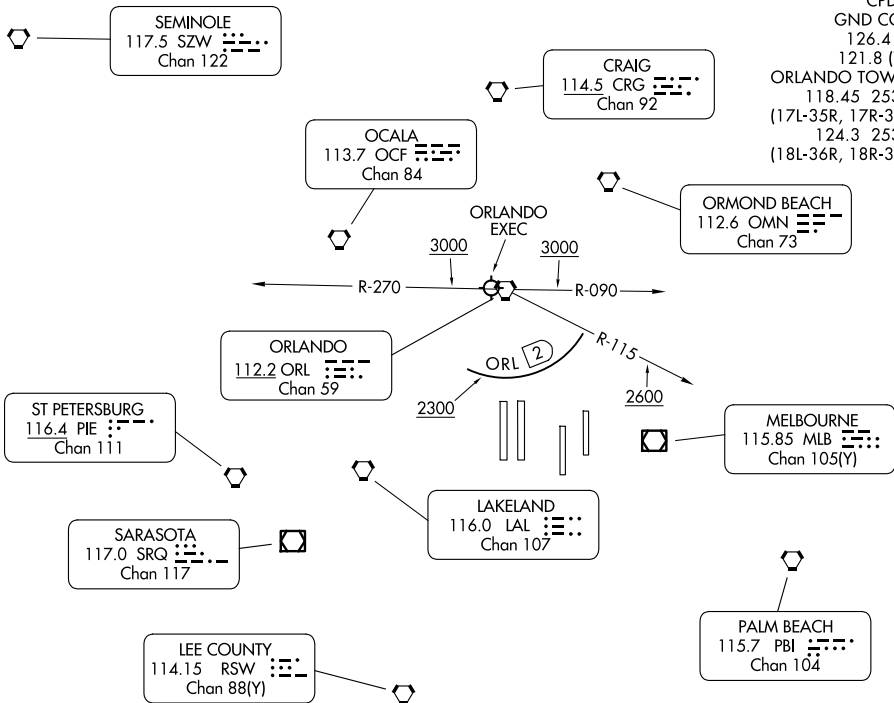


# ORLANDO SIX DEPARTURE

**TOP ALTITUDE:  
7000**

RADAR required - Takeoff Rwys 35L/R, 36L/R: DME required.

ORLANDO DEP CON  
124.8 307.0 (E)  
120.15 284.7 (W)  
D-ATIS DEP  
120.525  
CLNC DEL  
134.7 341.7  
CPDLC  
GND CON  
126.4 (E)  
121.8 (W)  
ORLANDO TOWER  
118.45 253.5  
(17L-35R, 17R-35L)  
124.3 253.5  
(18L-36R, 18R-36L)



TAKEOFF MINIMUMS

Rwys 17L/R, 18L/R, 35L/R, 36L/R: Standard.

NOTE: Chart not to scale.



## DEPARTURE ROUTE DESCRIPTION

**TAKEOFF ALL RUNWAYS:** Climb on assigned heading for RADAR vectors to assigned route. Maintain 7000. Expect filed altitude 10 minutes after departure.

**ALL AIRCRAFT:** ATC crossing restrictions and climb gradients: if unable to accept crossing restrictions and climb rates advise ATC prior to taxi.

Rwys 35L/R, 36L/R: Cross 2 DME south of ORL VORTAC at or above 2300, cross ORL VORTAC R-115 at or above 2600, cross ORL VORTAC R-090 or R-270 at or above 3000. Rws 35L/R: 566' per NM to 3000, Rwy 36L: 637' per NM to 3000, Rwy 36R: 621' per NM to 3000.