

OSPRY ONE DEPARTURE (RNAV)  
(OSPRY1 .OSPRY) 19MAY22

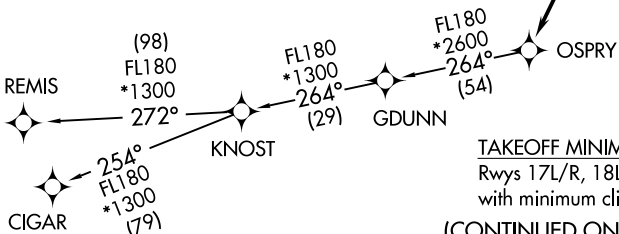
ORLANDO DEP CON  
120.15 284.7  
D-ATIS DEP  
120.525  
CLNC DEL  
134.7 341.7  
CPDLC  
GND CON  
126.4 (E)  
121.8 (W)  
ORLANDO TOWER  
118.45 253.5 (17L-35R, 17R-35L)  
124.3 253.5 (18L-36R, 18R-36L)

RNAV 1-GPS.  
RADAR required.

TOP ALTITUDE:  
7000

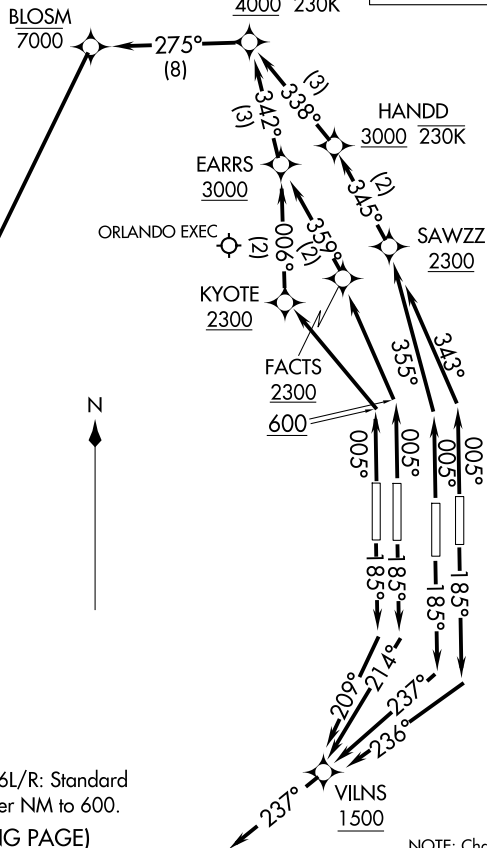
NOTE: Jet aircraft only.

ORLANDO, FLORIDA  
ORLANDO INTL (MCO)



TAKEOFF MINIMUMS  
Rwys 17L/R, 18L/R, 35L/R, 36L/R: Standard  
with minimum climb of 500' per NM to 600.

(CONTINUED ON FOLLOWING PAGE)



NOTE: Chart not to scale.

(OSPRY1 .OSPRY) 25219  
OSPRY ONE DEPARTURE (RNAV)

A1-571 (FAA)

ORLANDO INTL (MCO)  
ORLANDO, FLORIDA

# OSPRY ONE DEPARTURE (RNAV)



## DEPARTURE ROUTE DESCRIPTION

SEE ADDITIONAL REQUIREMENTS ON AAUP

TAKEOFF RUNWAY 17L: Climb on heading 185° to intercept course 236° to cross VILNS at or above 1500, then on track 237°, for vectors to OSPRY, thence . . . .

TAKEOFF RUNWAY 17R: Climb on heading 185° to intercept course 237° to cross VILNS at or above 1500, then on track 237°, for vectors to OSPRY, thence . . . .

TAKEOFF RUNWAY 18L: Climb on heading 185° to intercept course 214° to cross VILNS at or above 1500, then on track 237°, for vectors to OSPRY, thence . . . .

TAKEOFF RUNWAY 18R: Climb on heading 185° to intercept course 209° to cross VILNS at or above 1500, then on track 237°, for vectors to OSPRY, thence . . . .

TAKEOFF RUNWAY 35L: Climb on heading 005° to intercept course 355° to cross SAWZZ at or above 2300, then on track 345° to cross HANDD at or above 3000 and at or below 230K, then on track 338° to cross LEFTI at or above 4000 and at or below 230K, then on track 275° to cross BLOSM at or below 7000, then on track 235° to OSPRY, thence . . . .

TAKEOFF RUNWAY 35R: Climb on heading 005° to intercept course 343° to cross SAWZZ at or above 2300, then on track 345° to cross HANDD at or above 3000 and at or below 230K, then on track 338° to cross LEFTI at or above 4000 and at or below 230K, then on track 275° to cross BLOSM at or below 7000, then on track 235° to OSPRY, thence . . . .

TAKEOFF RUNWAY 36L: Climb on heading 005° to 600, then direct to cross KYOTE at or above 2300, then on track 006° to cross EARRS at or above 3000, then on track 342° to cross LEFTI at or above 4000 and at or below 230K, then on track 275° to cross BLOSM at or below 7000, then on track 235° to OSPRY, thence . . . .

TAKEOFF RUNWAY 36R: Climb on heading 005° to 600, then direct to cross FACTS at or above 2300, then on track 359° to cross EARRS at or above 3000, then on track 342° to cross LEFTI at or above 4000 and at or below 230K, then on track 275° to cross BLOSM at or below 7000, then on track 235° to OSPRY, thence . . . .

. . . . on assigned transition. Maintain 7000, expect clearance to filed altitude 10 minutes after departure.

ALL AIRCRAFT: ATC climb gradients: If unable to accept climb rates advise ATC prior to taxi. RUNWAY 35R: 566 FT/NM to 2300, RUNWAY 36L: 637 FT/NM to 2300, RUNWAY 36R: 621 FT/NM to 2300.

CIGAR TRANSITION (OSPRY1.CIGAR)

REMIS TRANSITION (OSPRY1.REMIS)

SE-3, 14 MAY 2026 to 11 JUN 2026

SE-3, 14 MAY 2026 to 11 JUN 2026

# OSPRY ONE DEPARTURE (RNAV)