

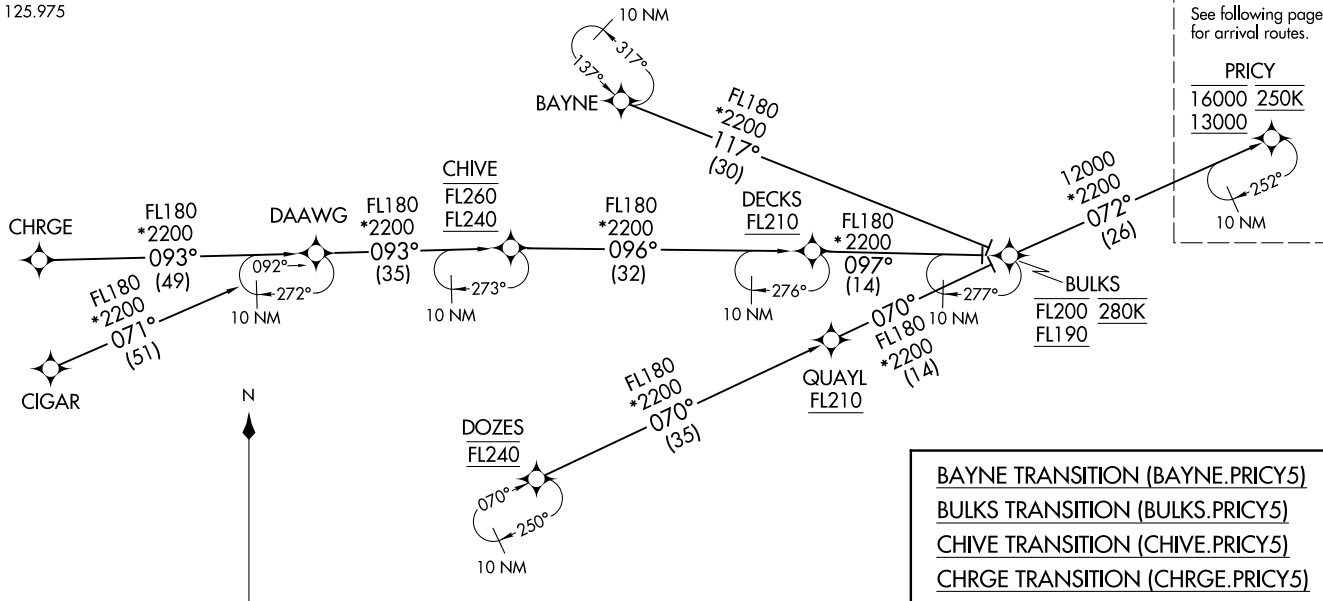
PRIC5.PRIC5) 19MAR25  
 (PRIC5.PRIC5) 19MAR25

PRIC5.PRIC5) 26078  
 AL-571 (FAA)

ORLANDO APP CON  
 134.05 339.8  
 ISM ATIS  
 128.775  
 LEE ATIS  
 134.325  
 MCO D-ATIS ARR  
 121.25  
 MLB ATIS  
 132.55  
 ORL ATIS  
 127.25  
 SFB ATIS  
 125.975

NOTE: Jet aircraft only.  
 NOTE: Do not file BULKS, CHIVE or DOZES Transitions - to be assigned by ATC.  
 NOTE: Landing south use Rwy 18R Transition, Landing north use Rwy 36L Transition.  
 NOTE: CHRGE and CIGAR Transitions, GPS required.

RNAV 1 - DME/DME/IRU or GPS.  
 From CHRGE: RNP 1-GPS.  
 From CIGAR: RNP 1-GPS.  
 RADAR required.



- BAYNE TRANSITION (BAYNE.PRIC5)
- BULKS TRANSITION (BULKS.PRIC5)
- CHIVE TRANSITION (CHIVE.PRIC5)
- CHRGE TRANSITION (CHRGE.PRIC5)
- CIGAR TRANSITION (CIGAR.PRIC5)
- DOZES TRANSITION (DOZES.PRIC5)

(CONTINUED ON FOLLOWING PAGE)

NOTE: Chart not to scale.

ORLANDO, FLORIDA

ORLANDO, FLORIDA

# PRICY FIVE ARRIVAL (RNAV) Arrival Routes

ORLANDO, FLORIDA

ORLANDO APP CON  
 134.05 339.8  
 ISM ATIS  
 128.775  
 LEE ATIS  
 134.325  
 MCO D-ATIS ARR  
 121.25  
 MLB ATIS  
 132.55  
 ORL ATIS  
 127.25  
 SFB ATIS  
 125.975

LEESBURG INTL



ORLANDO  
 SANFORD INTL



HAMMY



ORLANDO EXEC



ORLANDO INTL



RNAV 1 - DME/DME/IRU or GPS.  
 From CHRGE: RNP 1-GPS.  
 From CIGAR: RNP 1-GPS.

RADAR required.

- NOTE: Jet aircraft only.
- NOTE: Do not file BULKS, CHIVE or DOZES  
 Transitions - to be assigned by ATC.
- NOTE: Landing south use Rwy 18R Transition,  
 Landing north use Rwy 36L Transition.
- NOTE: CHRGE and CIGAR Transitions, GPS required.

DVOLA  
6000 210K  
 MCO Ldg Rwys 17L/R, 18L/R

GIRAF  
8000 220K

ARHIP

OTKEE  
11000

Ldg ISM/LEE/MLB/ORL/SFB

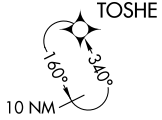
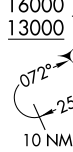
TAYYE  
12000 10000

PRICY  
16000 250K  
13000

AMADS  
9000

LORRA  
7000 210K

MCO Ldg Rwys 35L/R, 36L/R



NOTE: Chart not to scale.

(CONTINUED ON FOLLOWING PAGE)

SE-3, 14 MAY 2026 to 11 JUN 2026

SE-3, 14 MAY 2026 to 11 JUN 2026

# PRICY FIVE ARRIVAL (RNAV) Arrival Routes

ORLANDO, FLORIDA

ARRIVAL ROUTE DESCRIPTION

MCO: From PRICY on track 071° to BOCCE, then on track 068° to JUMBA.

LANDING MCO RUNWAYS 17L/R, 18L/R: From JUMBA on track 068° to cross TAYYE between 10000 and 12000, then on track 060° to ARHIP, then on track 006° to cross GIRAF at or above 8000 and at 220K, then on track 006° to cross DVOLA at 6000 and at 210K, then on track 006°. Expect RADAR vectors to final approach course.

LANDING MCO RUNWAYS 35L/R, 36L/R: From JUMBA on track 104° to cross AMADS at or below 9000, then on track 104° to cross LORRA at 7000 and at 210K, then on heading 096°. Expect RADAR vectors to final approach course.

LANDING LEE/SFB/ISM/MLB/ORL: From PRICY on track 071° to BOCCE, then on track 056° to cross OTKEE at 11000, then on track 056°. Expect RADAR vectors to final approach course.

SE-3, 14 MAY 2026 to 11 JUN 2026

SE-3, 14 MAY 2026 to 11 JUN 2026