

WAAS CH 66012 W18A	APP CRS 185°	Rwy Ldg 12004 TDZE 96 Apt Elev 96
--	------------------------	--

RNAV (GPS) RWY 18L

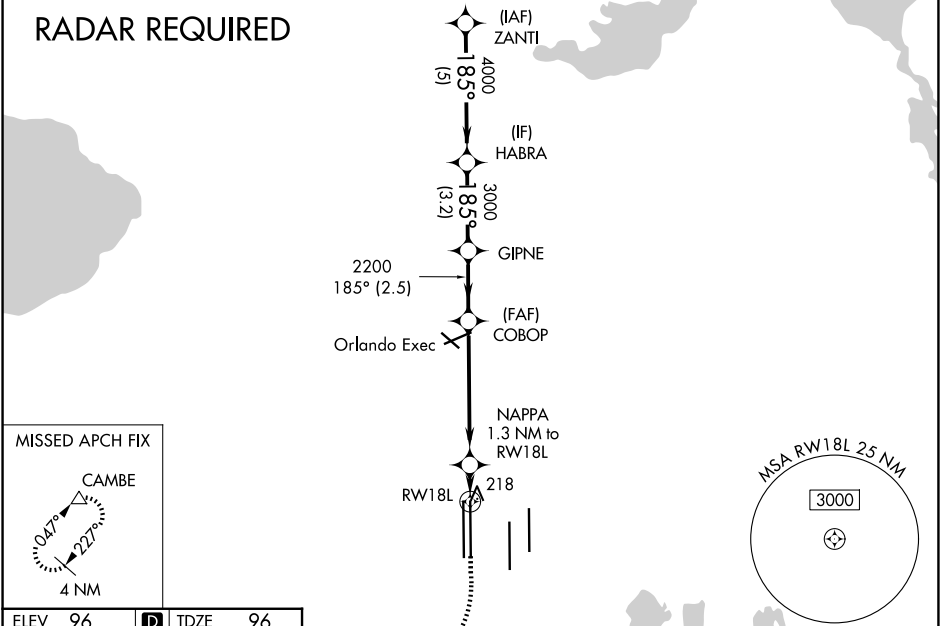
ORLANDO INTL (MCO)

▽ For uncompensated Baro-VNAV systems, LNAV/VNAV NA below -1°C (31°F) or above 54°C (130°F). DME/DME RNP-0.3 NA. Simultaneous approach authorized with Rwy 17L/R. LNAV procedure NA during simultaneous operations. Use of FD or AP providing RNAV track guidance required during simultaneous operations.

MISSED APPROACH: Climb to 500 then climbing right turn to 4000 direct CAMBE and hold, continue climb-in-hold to 4000.

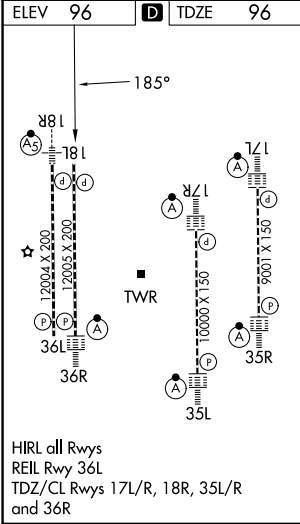
D-ATIS 121.25	ORLANDO APP CON 124.8 307.0	ORLANDO TOWER 118.45 253.5 (17L/35R, 17R/35L) 124.3 253.5 (18L/36R, 18R/36L)	GND CON 126.4 (E) 121.8 (W)
-------------------------	---------------------------------------	--	---

RADAR REQUIRED



SE-3, 14 MAY 2026 to 11 JUN 2026

SE-3, 14 MAY 2026 to 11 JUN 2026



VGSI and RNAV glidepath not coincident (VGSI Angle 3.00/TCH 71).

	ZANTI	HABRA	GIPNE	COBOP	NAPPA	RWY 18L
ELEV	4000	4000	3000	2200	218	218
GP	3.00°	3.00°	3.00°	3.00°	3.00°	3.00°
TCH	55	55	55	55	55	55
Distance	5 NM	3.2 NM	2.5 NM	5.2 NM	1.3 NM	
Category	A		B		C	
LPV DA	296/40		200 (200-¾)			
LNAV/VNAV DA	398/50		302 (400-1)			
LNAV MDA	480/55 384 (400-1)		480/60 384 (400-1¼)			
CIRCLING	740-1 644 (700-1)		740-1¾ 644 (700-1¾)		740-2 644 (700-2)	