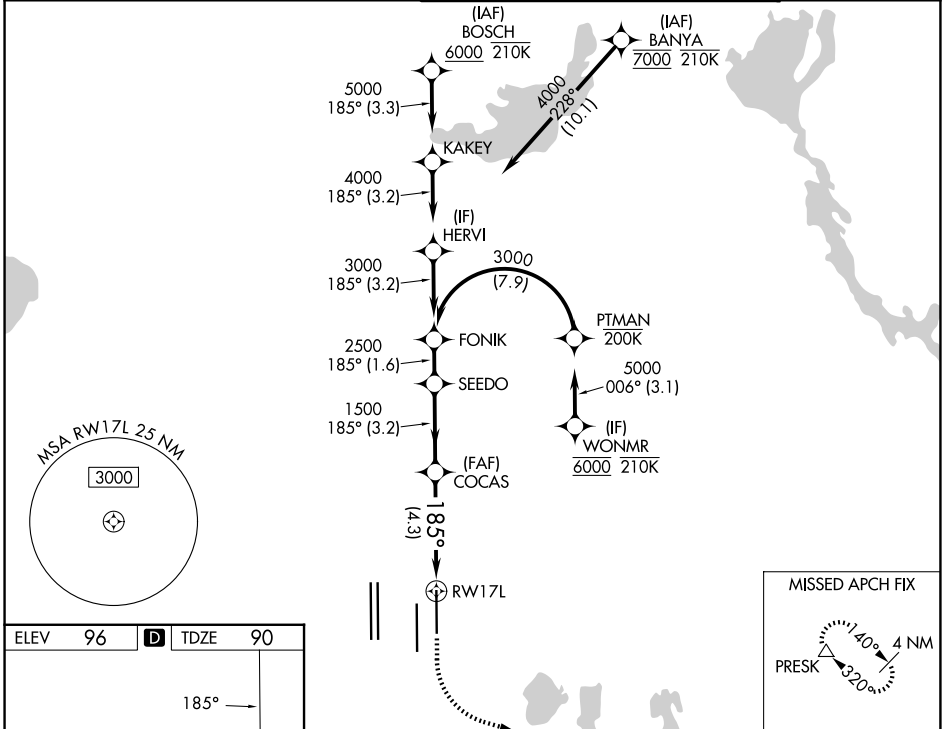


APP CRS	Rwy Ldg	9001
185°	TDZE	90
	Apt Elev	96

RNAV (RNP) Z RWY 17L

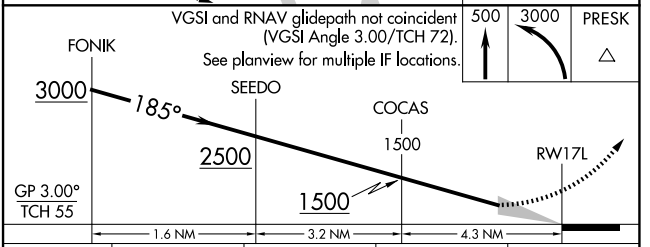
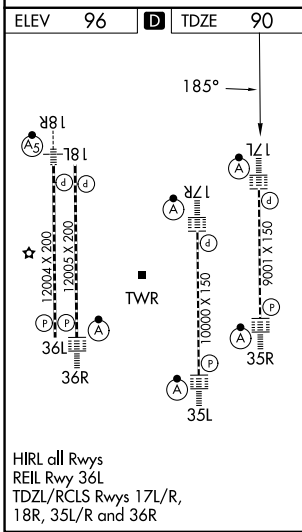
ORLANDO INTL (MCO)

RNP AR APCH - GPS. Authorization required. From PTMAN: RF.		ALSf-2 	MISSED APPROACH: Climb to 500 then climbing left turn to 3000 direct PRESK and hold, continue climb-in-hold to 3000.
<p>⚠ Simultaneous approach authorized. For uncompensated Baro-VNAV systems, procedure NA below 3°C or above 54°C. For inop ALS, increase RNP 0.12 all Cats visibility to RVR 4500 and RNP 0.3 all Cats visibility to 5500.</p>			
D-ATIS 121.25	ORLANDO APP CON 124.8 307.0	ORLANDO TOWER 118.45 253.5 (17L/35R, 17R/35L) 124.3 253.5 (18L/36R, 18R/36L)	GND CON 126.4 (E) 121.8 (W)



SE-3, 14 MAY 2026 to 11 JUN 2026

SE-3, 14 MAY 2026 to 11 JUN 2026



CATEGORY	A	B	C	D
RNP 0.12 DA		358/24	268 (300-½)	
RNP 0.30 DA		444/30	354 (400-¾)	

AUTHORIZATION REQUIRED