

# RNAV (GPS) Y RWY 36L

ORLANDO INTL (MCO)

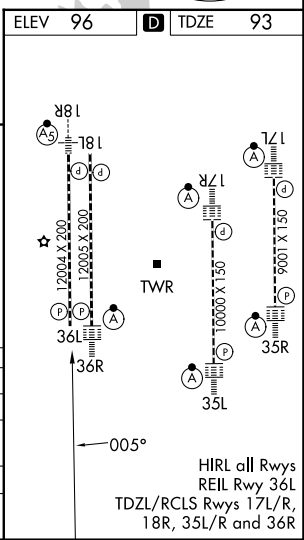
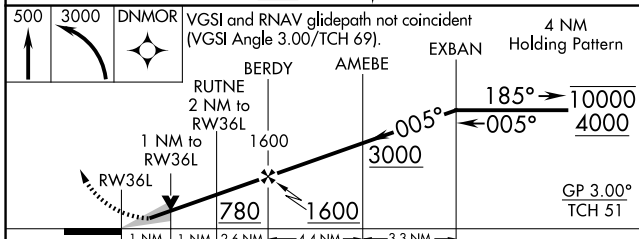
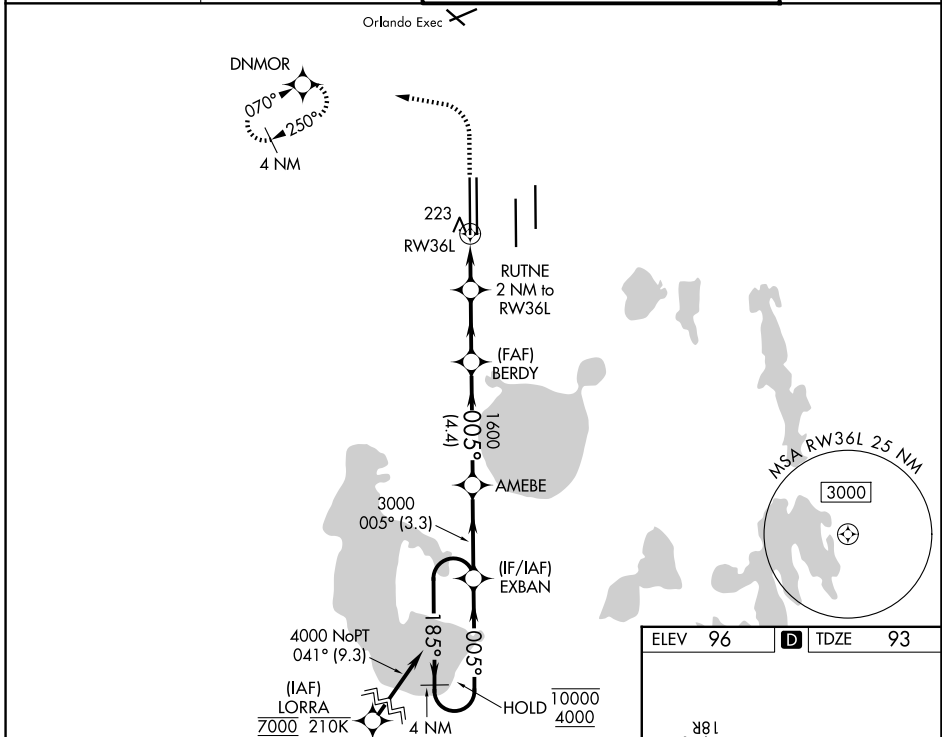
WAAS CH <b>82313</b> <b>W36B</b>	APP CRS <b>005°</b>	Rwy Ldg <b>11621</b> TDZE <b>93</b> Apt Elev <b>96</b>
--	------------------------	--

RNP APCH - GPS.

**Simultaneous approach authorized. LNAV procedure NA during simultaneous operations.**  
For uncompensated Baro-VNAV systems, LNAV/VNAV NA below 3°C or above 54°C.  
Use of FD or AP required during simultaneous operations.

**MISSED APPROACH:** Climb to 500 then climbing left turn to 3000 direct DNMOR and hold, continue climb-in-hold to 3000.

D-ATIS <b>121.25</b>	ORLANDO APP CON <b>124.8 307.0</b>	ORLANDO TOWER <b>118.45 253.5</b> (17L/35R, 17R/35L) <b>124.3 253.5</b> (18L/36R, 18R/36L)	GND CON <b>126.4</b> (E) <b>121.8</b> (W)
-------------------------	---------------------------------------	--	---



CATEGORY	A	B	C	D
LPV DA		293/40	200 (200-¾)	
LNAV/VNAV DA		406/45	313 (400-¾)	
LNAV MDA	480/55	387 (400-1)	480/60	387 (400-1½)
CIRCLING	740-1	644 (700-1)	740-1¾ 644 (700-1¾)	740-2 644 (700-2)

SE-3, 14 MAY 2026 to 11 JUN 2026

SE-3, 14 MAY 2026 to 11 JUN 2026