

WAAS CH <b>70411</b> <b>W18B</b>	APP CRS <b>181°</b>	Rwy Ldg TDZE Apt Elev	<b>7019</b> <b>128</b> <b>131</b>
--	------------------------	-----------------------------	---

# RNAV (GPS) RWY 18R

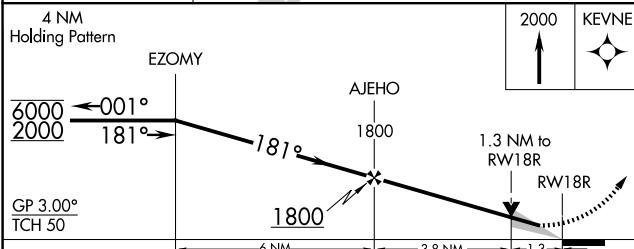
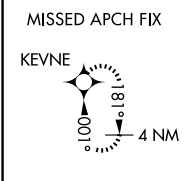
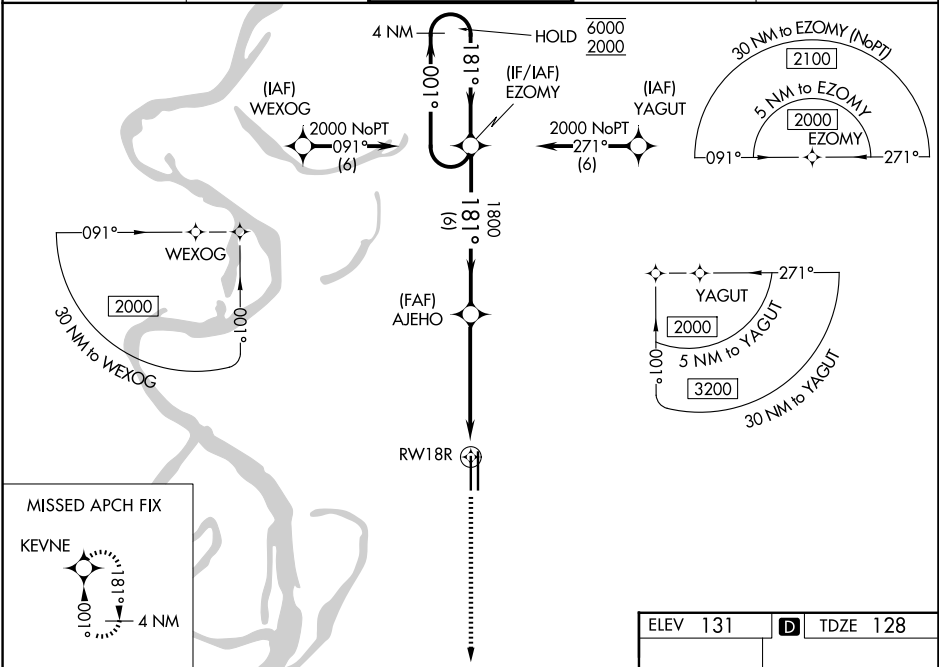
GREENVILLE MID-DELTA (GLH)

RNP APCH - GPS.

**⚠** For uncompensated Baro-VNAV systems, LNAV/VNAV NA below -7°C or above 54°C.

MISSED APPROACH: Climb to 2000 direct KEVNE and hold.

ASOS <b>125.525</b>	MEMPHIS CENTER <b>135.875 269.35</b>	GREENVILLE TOWER ★ <b>119.0</b> (CTAF) <b>0 256.9</b>	GND CON <b>121.8 256.9</b>	UNICOM <b>122.95</b>
------------------------	---	--	-------------------------------	-------------------------



ELEV 131	<b>D</b>	TDZE 128
----------	----------	----------

Vertical Profile Diagram:  
 - 181° track from 1800 ft to 181 ft (RWY 18R)  
 - 181 ft (RWY 18R)  
 - 150 ft (36L)  
 - 151 ft (36R)  
 - 8000 ft (36L)  
 - 8000 ft (36R)

CATEGORY	A	B	C	D
LPV DA		328-1	200 (200-1)	
LNAV/VNAV DA		523-1½	395 (400-1½)	
LNAV MDA	580-1	452 (500-1)	580-1¾	452 (500-1¾)
CIRCLING	600-1	469 (500-1)	600-1½	800-2
			469 (500-1½)	669 (700-2)

REIL Rwy 36R  
MIRL Rwy 18R-36L **①**  
HIRL Rwy 18L-36R **①**

SC-4, 14 MAY 2026 to 11 JUN 2026

SC-4, 14 MAY 2026 to 11 JUN 2026