

| | | |
|--|------------------------|---|
| WAAS CH 58003 W14A | APP CRS 136° | Rwy Ldg 5502 TDZE 583 Apt Elev 583 |
|--|------------------------|---|

RNAV (GPS) RWY 14

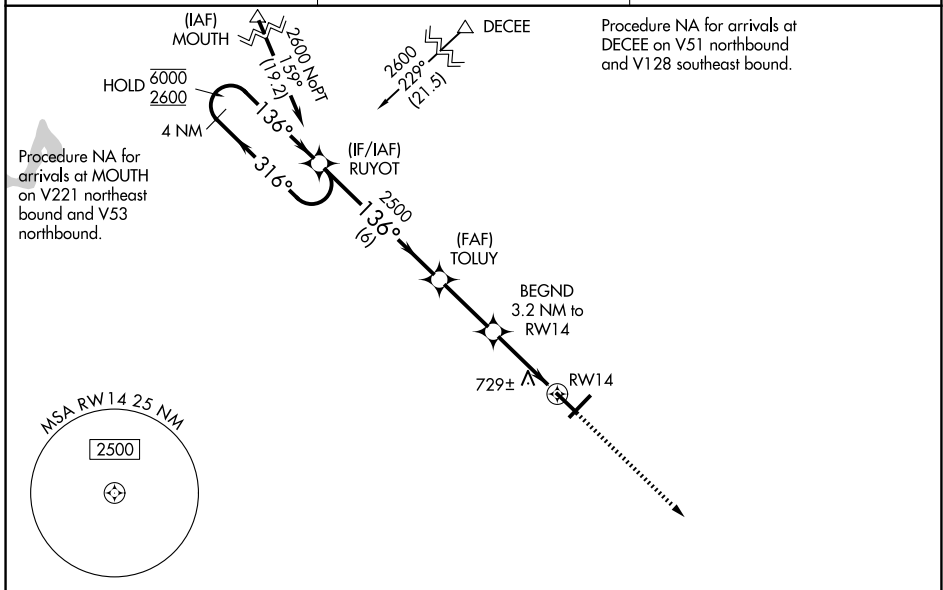
FREEMAN MUNI (SE.R)

RNP APCH - GPS.

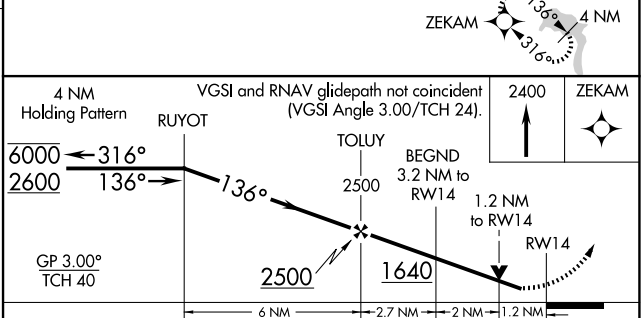
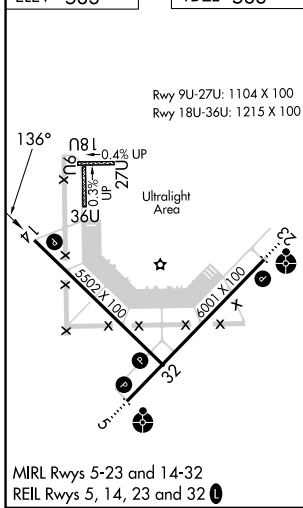
NA Baro-VNAV and VDP NA when using Louisville Muhammad Ali Intl altimeter setting. Rwy 14 helicopter visibility reduction below 3/4 SM NA. For uncompensated Baro-VNAV systems, LNAV/VNAV NA below -16°C or above 54°C. When local altimeter setting not received, use Louisville Muhammad Ali Intl altimeter setting and increase all DA 117 feet and all MDA 120 feet; increase LPV and LNAV/VNAV all Cats and LNAV and Circling Cats C/D visibility 1/4 SM.

MISSED APPROACH:
Climb to 2400 direct ZEKAM and hold.

| | | |
|--------------------------|--|-------------------------------|
| AWOS-3 119.425 | LOUISVILLE APP CON 132.075 327.0 | UNICOM 122.8 (CTAF) |
|--------------------------|--|-------------------------------|



| | |
|-----------------|-----------------|
| ELEV 583 | TDZE 583 |
|-----------------|-----------------|



| CATEGORY | A | B | C | D |
|--------------|-----------------------|-----------------------|-----------------------|-------------------------------|
| LPV DA | | 860-7/8 | 277 (300-7/8) | |
| LNAV/VNAV DA | | 1037-13/8 | 454 (500-13/8) | |
| LNAV MDA | 980-1 | 397 (400-1) | 980-1 1/8 | 397 (400-1 1/8) |
| CIRCLING | 1040-1 457 (500-1) | 1100-1 517 (600-1) | 1300-2 717 (800-2) | 1300-2 1/4 717 (800-2 1/4) |

EC-2, 14 MAY 2026 to 11 JUN 2026

EC-2, 14 MAY 2026 to 11 JUN 2026