

WAAS CH <b>99403</b> <b>W32A</b>	APP CRS <b>316°</b>	Rwy Ldg TDZE <b>574</b> Apt Elev <b>583</b>
--	------------------------	---

# RNAV (GPS) RWY 32

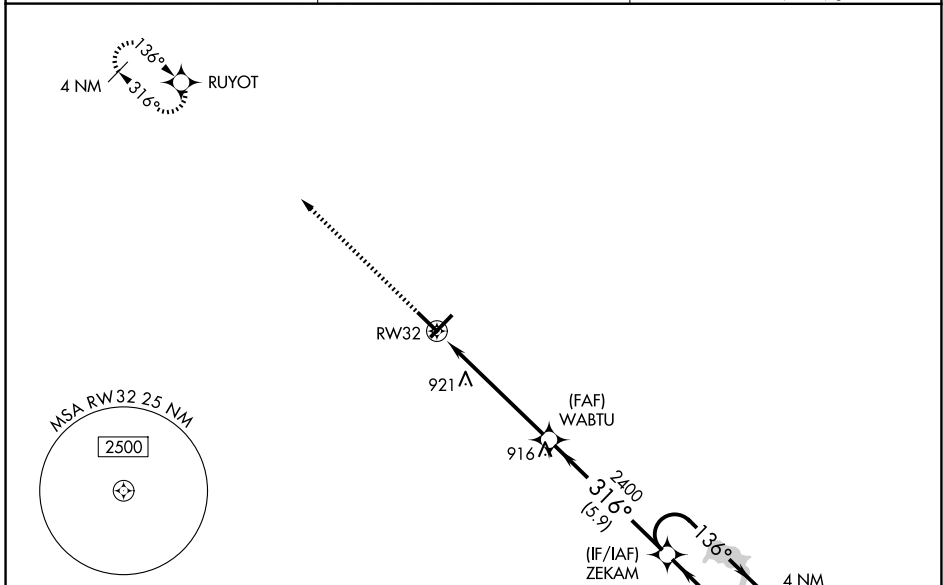
FREEMAN MUNI (SE.R)

RNP APCH - GPS.

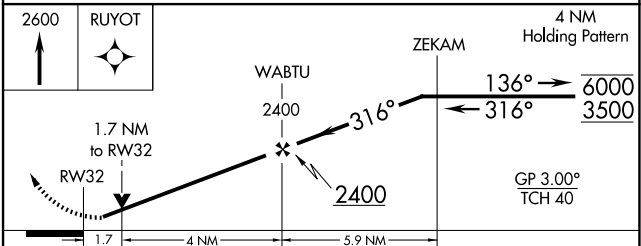
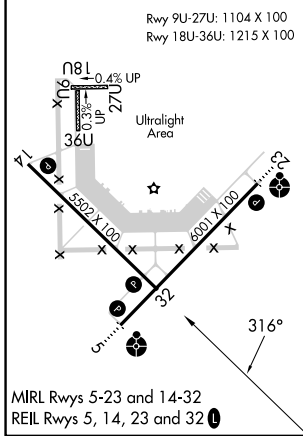
**NA** Baro-VNAV and VDP NA when using Louisville Muhammad Ali Intl altimeter setting. Rwy 32 helicopter visibility reduction below 3/4 SM NA. For uncompensated Baro-VNAV systems, LNAV/VNAV NA below -16°C or above 54°C. When local altimeter setting not received, use Louisville Muhammad Ali Intl altimeter setting and increase LPV DA to 979 feet and all visibilities 1/2 SM; increase LNAV/VNAV DA to 1230 feet and all visibilities 3/8 SM; increase all MDAs 120 feet and LNAV visibility Cat C/D 3/8 SM, and Circling visibility Cat C/D 1/2 SM.

**MISSED APPROACH:**  
Climb to 2600 direct RUYOT and hold.

AWOS-3 <b>119.425</b>	LOUISVILLE APP CON <b>132.075 327.0</b>	UNICOM <b>122.8 (CTAF)</b>
--------------------------	--	-------------------------------



ELEV <b>583</b>	TDZE <b>574</b>
-----------------	-----------------



CATEGORY	A	B	C	D
LPV DA	859-1 285 (300-1)			
LNAV/VNAV DA	1110-1½ 536 (600-1½)			
LNAV MDA	1140-1	566 (600-1)	1140-1½	566 (600-1½)
CIRCLING	1140-1	557 (600-1)	1300-2 717 (800-2)	1300-2¼ 717 (800-2¼)

EC-2, 14 MAY 2026 to 11 JUN 2026

EC-2, 14 MAY 2026 to 11 JUN 2026