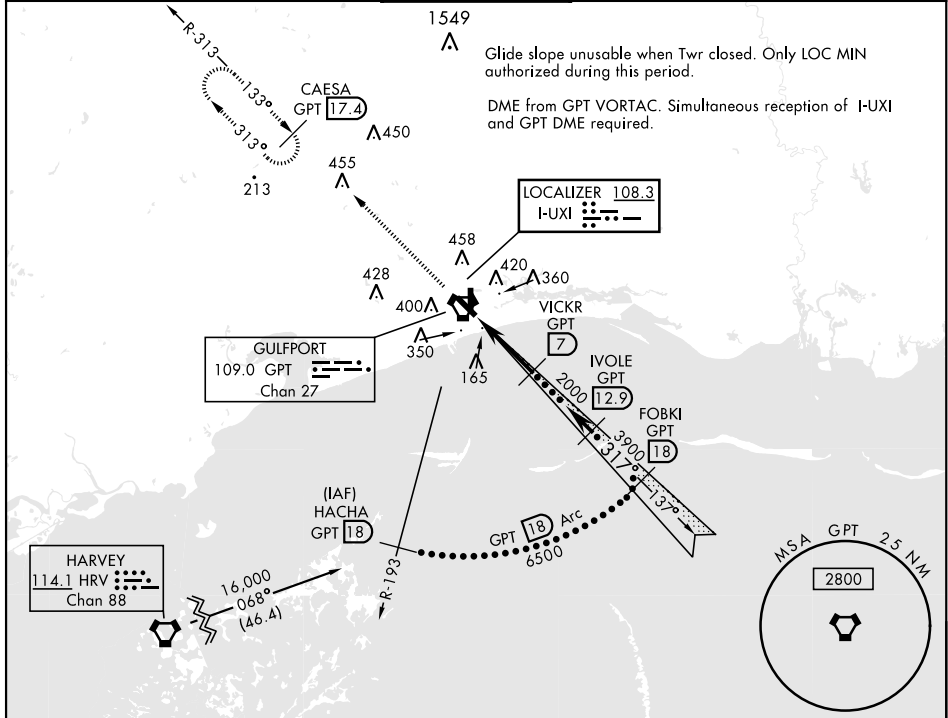


# HI-ILS Y or LOC Y RWY 32

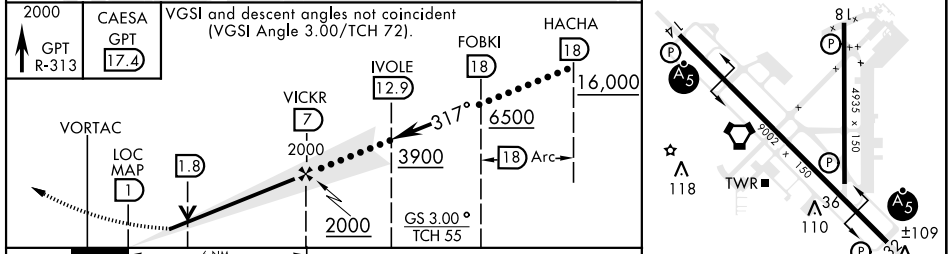
LOC I-UXI <b>108.3</b>	APCH CRS <b>317°</b>	Rwy Idg TDZE Arprt Elev <b>9002</b> <b>27</b> <b>28</b>	AL-576 [USAF]	GULFPORT-BILOXI INTL (KGPT)
---------------------------	-------------------------	--	---------------	-----------------------------

RADAR or DME required.	<p>▼ * When ALS inop increase CAT E RVR 40, RVR 18 authorized with use of FD or AP or HUD to DA.</p> <p>▲ ** When ALS inop increase RVR 55.</p>	<p>MALSR</p>	<p>MISSED APPROACH: Climb to 2000 on GPT VORTAC R-313 to CAESA/GPT 17.4 DME and hold.</p>
------------------------	---	--------------	---

ATIS ★ <b>119.45</b>	GULFPORT APP CON <b>124.6 354.1</b> 130°-309° <b>127.5 254.25</b> 310°-129°	GULFPORT TOWER ★ <b>123.7</b> CTAF <b>0 339.8</b>	GND CON <b>120.4 348.6</b>	UNICOM <b>122.95</b>	ASR
-------------------------	---	--	-------------------------------	-------------------------	-----



EMERG SAFE ALT 100 NM 3100	ELEV 28	TDZE 27
----------------------------	---------	---------



CATEGORY	C	D	E	
S-ILS 32 *	228/24	200	(200-½)	
S-LOC 32 **	380/30	352	(400-¾)	
CIRCLING	820-2 ¼ 791 (800-2 ¼)	820-2 ½ 791 (800-2 ½)	820-2 ¾ 791 (800-2 ¾)	HIRL Rwy 14-32 MRL Rwy 18-36

# HI-ILS Y or LOC Y RWY 32

SC-4, 14 MAY 2026 to 11 JUN 2026

SC-4, 14 MAY 2026 to 11 JUN 2026