

LOC I-UXI 108.3	APP CRS 317°	Rwy Ldg TDZE Apt Elev	9002 27 28
---------------------------	------------------------	-----------------------------	---------------------------------------

ILS Z or LOC Z RWY 32

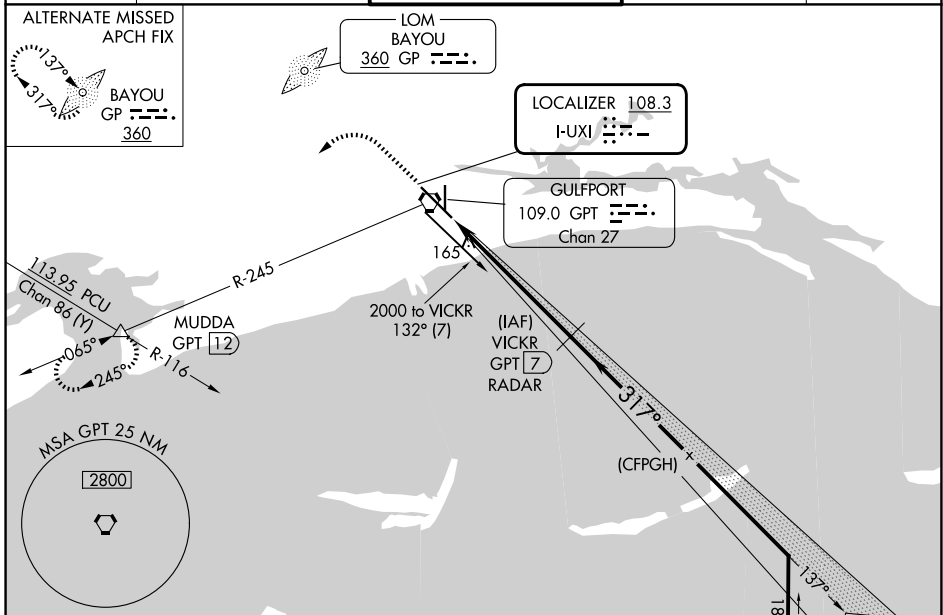
GULFPORT-BILOXI INTL (GPT)

DME or RADAR required, except DME required when control tower closed.

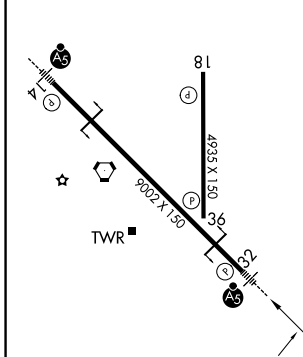
ASR Rwy 32 helicopter visibility reduction below RVR 4000 NA. Inop table does not apply to S-ILS 32. DME from GPT VORTAC. Simultaneous reception of I-UXI and GPT DME required. For inop ALS, increase S-LOC 32 all Cats visibility to RVR 5500.

MALSR MISSED APPROACH: Climb to 500 then climbing left turn to 2000 on GPT VORTAC R-245 to MUDDA INT/GPT 12 DME and hold.

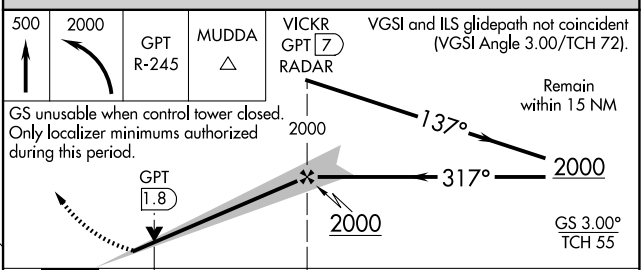
ATIS 119.45	GULFPORT APP CON * 127.5 254.25	GULFPORT TOWER * 123.7 (CTAF) 0 339.8	GND CON 120.4 348.6	UNICOM 122.95
-----------------------	---	---	-------------------------------	-------------------------



ELEV 28	TDZE 27
---------	---------



FAF to MAP 6 NM					
Knots	60	90	120	150	180
Min:Sec	6:00	4:00	3:00	2:24	2:00



CATEGORY	A	B	C	D	E
S-ILS 32		277/40	250 (300-¾)		
S-LOC 32		380/40	353 (400-¾)		
CIRCLING	520-1 492 (500-1)	640-1 612 (700-1)	760-2 732 (800-2)	760-2¼ 732 (800-2¼)	760-2½ 732 (800-2½)

SC-4, 14 MAY 2026 to 11 JUN 2026

SC-4, 14 MAY 2026 to 11 JUN 2026