

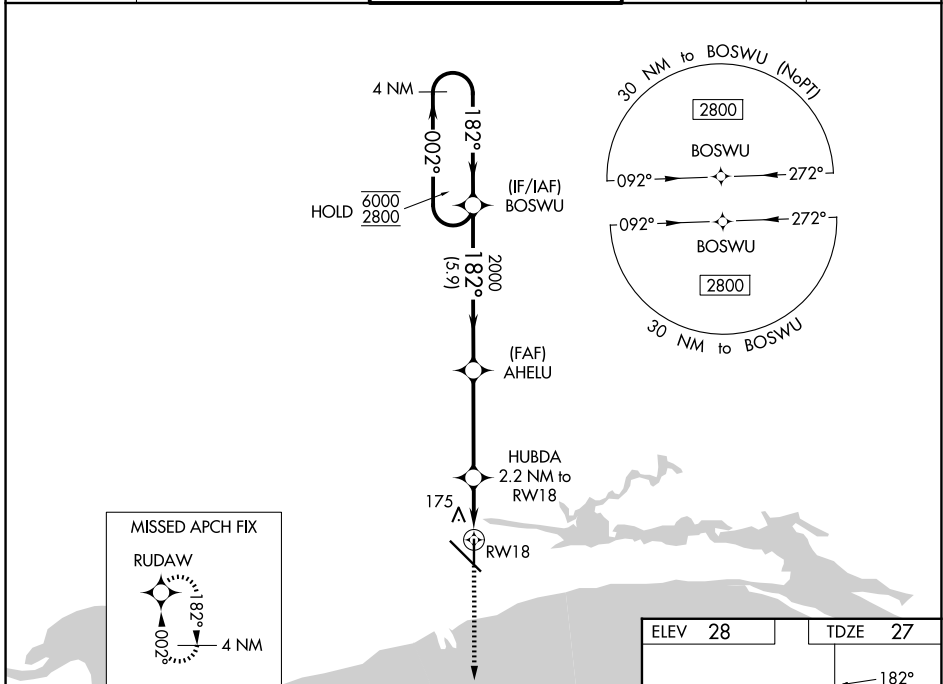
WAAS CH 69512 W18A	APP CRS 182°	Rwy Ldg 4935 TDZE 27 Apt Elev 28
--	------------------------	---

RNAV (GPS) RWY 18

GULFPORT-BILOXI INTL (GPT)

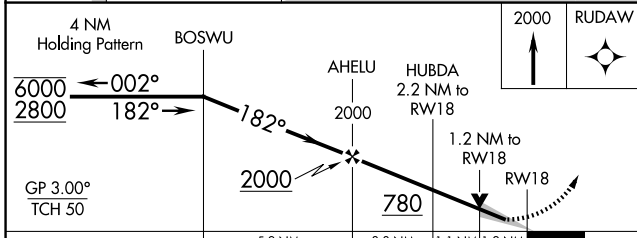
RNP APCH - GPS.		MISSED APPROACH: Climb to 2000 direct RUDAW and hold.		
⚠ ASR	For uncompensated Baro-VNAV systems, LNAV/VNAV NA below -3°C or above 54°C.			

ATIS 119.45	GULFPORT APP CON * 127.5 254.25	GULFPORT TOWER * 123.7 (CTAF) 339.8	GND CON 120.4 348.6	UNICOM 122.95
-----------------------	---	---	-------------------------------	-------------------------



SC-4, 14 MAY 2026 to 11 JUN 2026

SC-4, 14 MAY 2026 to 11 JUN 2026



ELEV 28	TDZE 27
HIRL Rwy 14-32 1	
MIRL Rwy 18-36 1	