

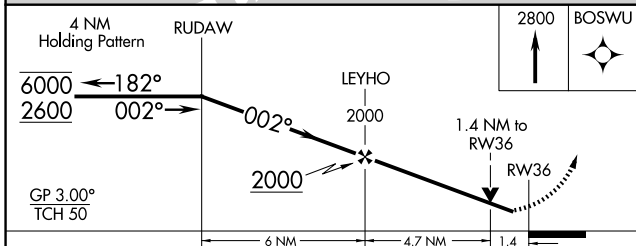
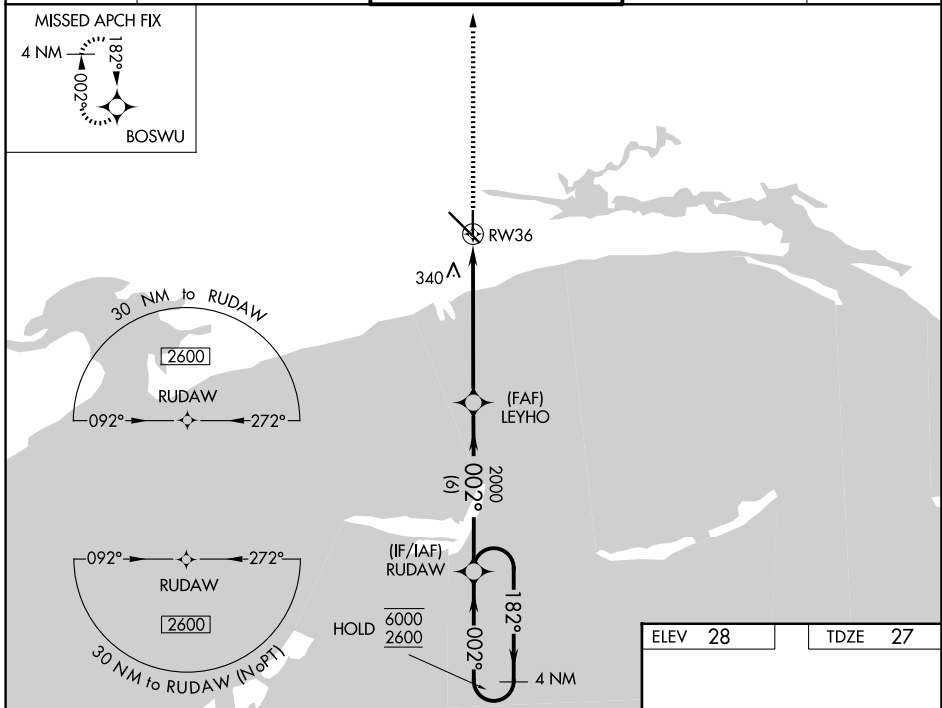
WAAS CH 42812 W36A	APP CRS 002°	Rwy Ldg 4935 TDZE 27 Apt Elev 28
--	------------------------	---

RNAV (GPS) RWY 36

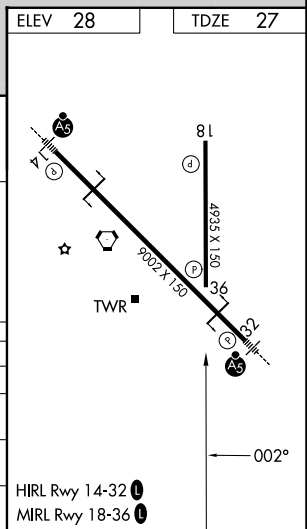
GULFPORT-BILOXI INTL (GPT)

RNP APCH - GPS.		MISSED APPROACH: Climb to 2800 direct BOSWU and hold.		
<p>⚠ Rwy 36 helicopter visibility reduction below 3/4 SM NA. For uncompensated Baro-VNAV systems, LNAV/VNAV NA below -3°C or above 54°C.</p> <p>ASR</p>				

ATIS 119.45	GULFPORT APP CON * 127.5 254.25	GULFPORT TOWER * 123.7 (CTAF) 0 339.8	GND CON 120.4 348.6	UNICOM 122.95
-----------------------	---	---	-------------------------------	-------------------------



CATEGORY	A	B	C	D
LPV DA		277-3/4	250 (300-3/4)	
LNAV/VNAV DA		520-1 3/8	493 (500-1 3/8)	
LNAV MDA	520-1	493 (500-1)	520-1 3/8	493 (500-1 3/8)
CIRCLING	520-1 492 (500-1)	640-1 612 (700-1)	760-2 732 (800-2)	760-2 1/4 732 (800-2 1/4)



SC-4, 14 MAY 2026 to 11 JUN 2026

SC-4, 14 MAY 2026 to 11 JUN 2026