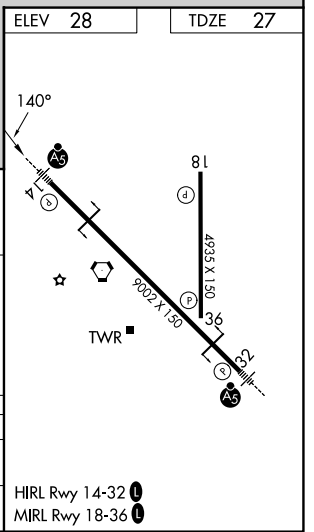
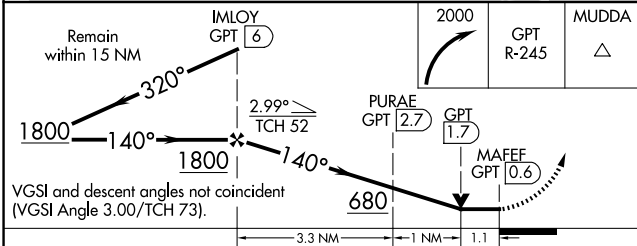
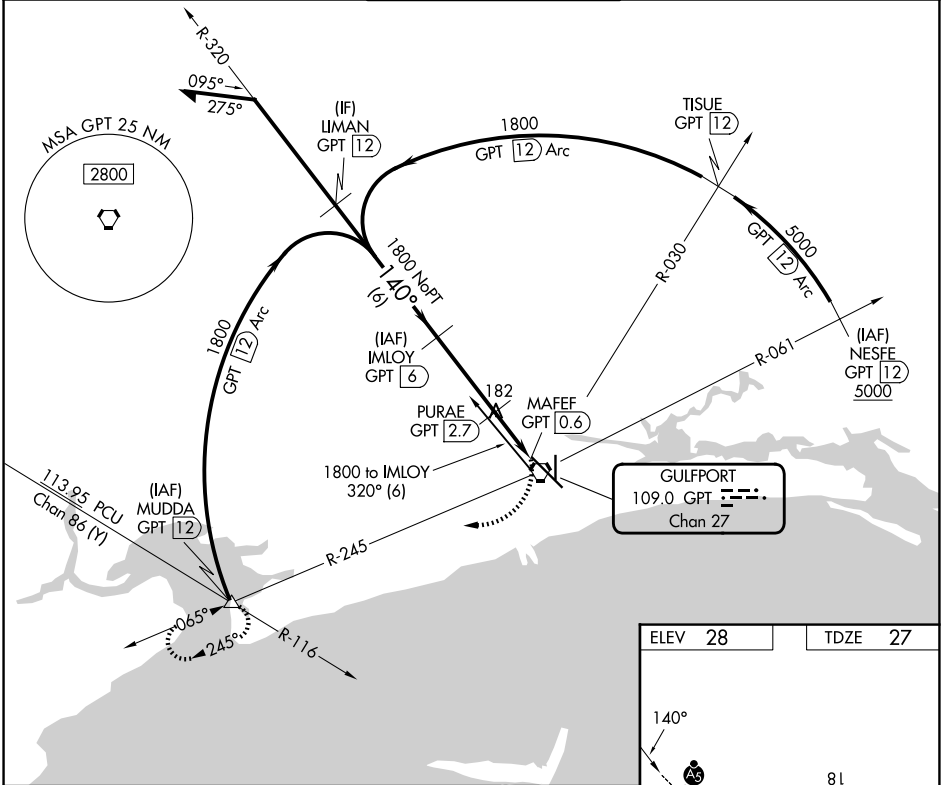


VORTAC GPT 109.0 Chan 27	APP CRS 140°	Rwy Ldg TDZE Apt Elev	9002 27 28
--	------------------------	-----------------------------	---------------------------------------

VOR Z or TACAN Z RWY 14

GULFPORT-BILOXI INTL (GPT)

DME required.		MALSR		MISSED APPROACH: Climbing right turn to 2000 on GPT VORTAC R-245 to MUDDA INT/12 DME and hold.	
<p>For inop ALS, increase S-14 Cat C/D/E visibility to RVR 6000.</p>					
ATIS 119.45	GULFPORT APP CON * 127.5 254.25	GULFPORT TOWER * 123.7 (CTAF) 0 339.8		GND CON 120.4 348.6	UNICOM 122.95



CATEGORY	A	B	C	D	E
S-14	440/24	413 (500-1/2)	440/40 413 (500-3/4)		
CIRCLING	520-1 492 (500-1)	640-1 612 (700-1)	820-2 1/4 792 (800-2 1/4)	820-2 1/2 792 (800-2 1/2)	820-2 3/4 792 (800-2 3/4)

SC-4, 14 MAY 2026 to 11 JUN 2026

SC-4, 14 MAY 2026 to 11 JUN 2026