

CLIOS-TWO DEPARTURE (CLIOS2.CLIOS)

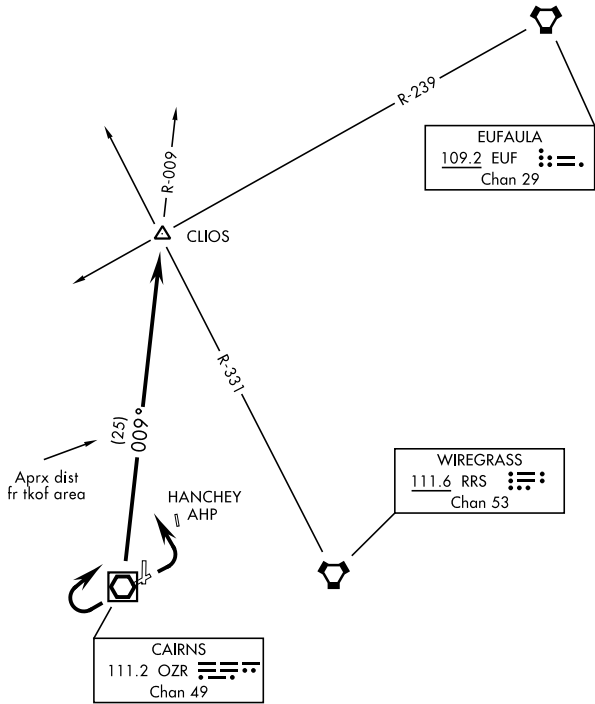
CAIRNS AAF (FORT RUCKER) (KOZR)

[USA]

FORT RUCKER, ALABAMA

RADAR required

ATIS 111.2 316.15
 GND CON ★
 121.9 288.25
 TOWER ★
 135.2 (CTAF) 248.55
 DEP CON ★
 220° - 340° 133.45 239.275
 341° - 120° 125.4 327.125
 121° - 219° 133.75 270.35
 JACKSONVILLE CENTER
 134.3 322.55



SE-4, 14 MAY 2026 to 11 JUN 2026

SE-4, 14 MAY 2026 to 11 JUN 2026



DEPARTURE ROUTE DESCRIPTION

TAKEOFF RWY 6 or RWY 18: Climbing left turn heading 330°...
TAKEOFF RWY 24: Climbing right turn heading 050°....
TAKEOFF RWY 36: Climb on heading 350°...
TAKEOFF FROM CENTER OF HELIPAD D1: Climb on heading 350°...
TAKEOFF FROM CENTER OF HELIPAD D2: Climb on heading 350°...
 Maintain 2000, expect clearance to requested altitude/flight level ten (10) minutes after departure.
 ...intercept OZR VOR/DME R-009 to CLIOS INT.

CLIOS-TWO DEPARTURE (CLIOS2.CLIOS)

Amdt 1 10AUG23

FORT RUCKER, ALABAMA

CAIRNS AAF (FORT RUCKER) (KOZR)