

# HAXES TWO DEPARTURE (RNAV) (HAXES2.HAXES)

FORT RUCKER, ALABAMA

[USA]

RNAV1 - GPS

ENNTT

DEP CON ★

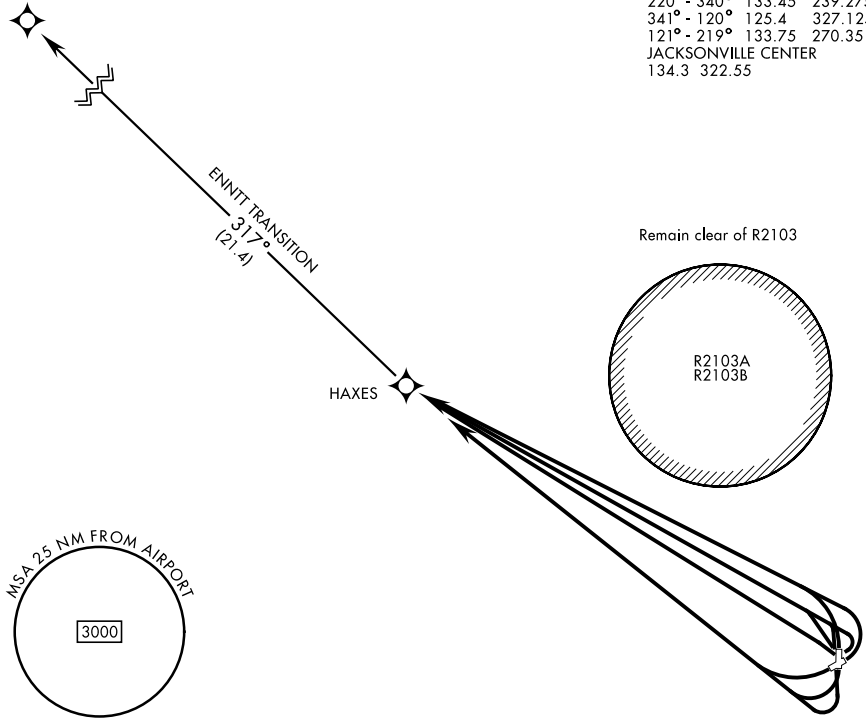
220° - 340° 133.45 239.275

341° - 120° 125.4 327.125

121° - 219° 133.75 270.35

JACKSONVILLE CENTER

134.3 322.55



## DEPARTURE ROUTE DESCRIPTION

TAKEOFF RWY 6 or 36: Climbing left turn direct HAXES, thence...

TAKEOFF RWY 18 or 24: Climbing right turn direct HAXES, thence...

TAKEOFF PAD ALPHA: Climb on heading 310° to 400 AGL, then direct HAXES, thence...

TAKEOFF PAD CHARLIE: Climb on heading 060° to 400 AGL, then left turn direct HAXES, thence...

TAKEOFF PAD DELTA 1: Climb on heading 330° to 400 AGL, then direct HAXES, thence...

TAKEOFF PAD DELTA 2: Climb on heading 360° to 400 AGL, then direct HAXES, thence...

TAKEOFF PAD GOLF: Climb on heading 180° to 400 AGL, then right turn direct HAXES, thence...

...as assigned. Maintain 2000, expect clearance to requested altitude/flight level ten (10) minutes after departure.

ENNTT TRANSITION (HAXES2.ENNTT) (Not authorized for Helipads Delta 1 or Delta 2): Track 317° to ENNTT.

# HAXES TWO DEPARTURE (RNAV) (HAXES2.HAXES)

FORT RUCKER, ALABAMA

Orig 14MAY26

CAIRNS AAF (FORT RUCKER) (KOZR)