

FORT RUCKER, ALABAMA

RNAV (GPS) RWY 36

CAIRNS AAF (FORT RUCKER) (KOZR)

| | | | |
|--|-------------------------|-------------------------------|---|
| WAAS CH 63110 W36A | APCH CRS 004° | Rwy Idg TDZE Arprt Elev | 5025 298 301 |
|--|-------------------------|-------------------------------|---|

[USA]

RNP APCH - GPS

MISSED APPROACH: Climb to 2000 direct RKEMP and hold.

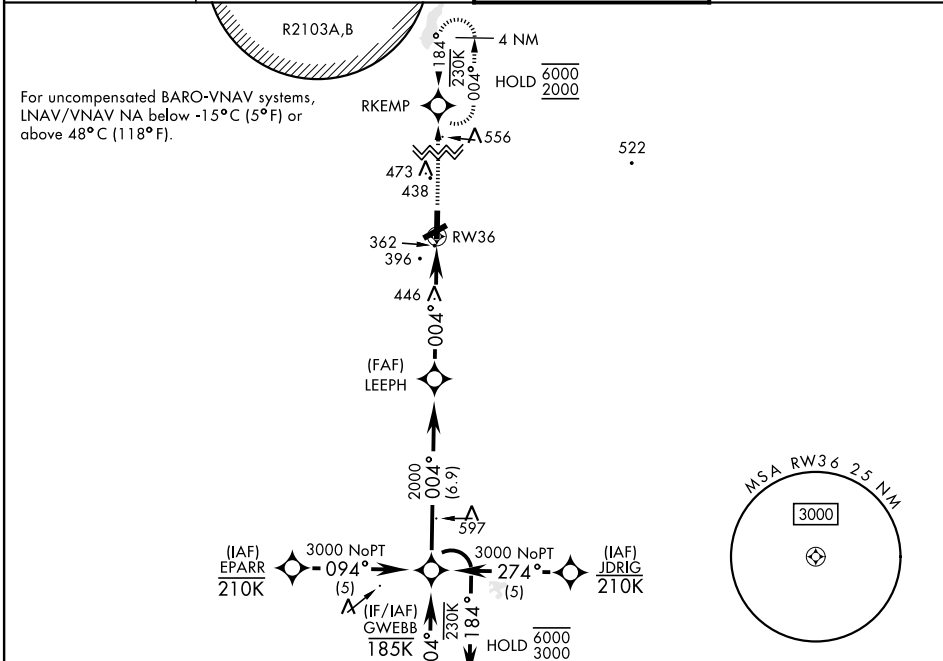
▼
* Circling visibility reduction by helicopters not authorized.

ATIS
111.2 316.15

APP CON ★
220°-340° **133.45 239.275**
341°-120° **125.4 327.125**
121°-219° **133.75 270.35**

TOWER ★
135.2 (CTAF) 248.55

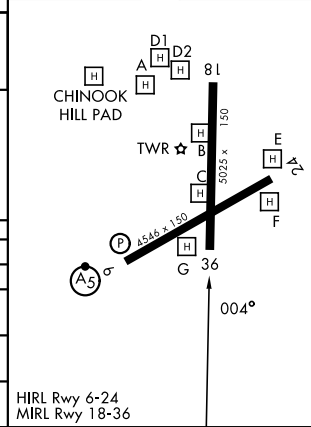
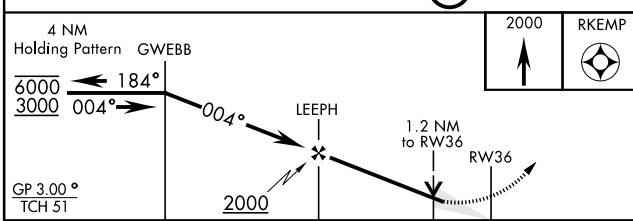
GND CON★
121.9 288.25



SE-4, 14 MAY 2026 to 11 JUN 2026

SE-4, 14 MAY 2026 to 11 JUN 2026

| | | | |
|------|-----|------|-----|
| ELEV | 301 | TDZE | 298 |
|------|-----|------|-----|



| CATEGORY | A | B | C | D |
|--------------|----------------------|----------------------|------------------------|----------------------|
| LPV DA | 548-¾ | 250 | (300-¾) | |
| LNAV/VNAV DA | 557-¾ | 259 | (300-¾) | |
| LNAV MDA | 740-1 | 442 (500-1) | 740-1½ | 442 (500-1½) |
| CIRCLING* | 780-1 479 (500-1) | 820-1 519 (600-1) | 900-1½ 599 (600-1½) | 900-2 599 (600-2) |

HIRL Rwy 6-24
MIRL Rwy 18-36

FORT RUCKER, ALABAMA

31° 17' N-85° 43' W

CAIRNS AAF (FORT RUCKER) (KOZR)

Amtd 2 26DEC24

RNAV (GPS) RWY 36