

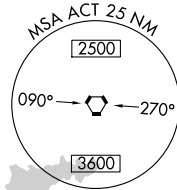
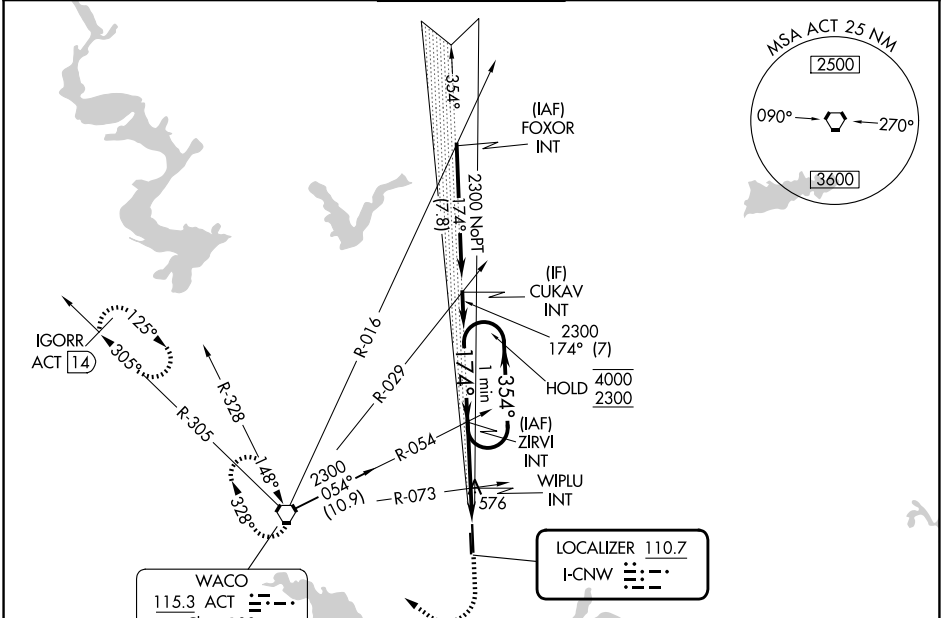
LOC I-CNW <b>110.7</b>	APP CRS <b>174°</b>	Rwy Ldg TDZE Apt Elev	<b>8600</b> <b>470</b> <b>470</b>
---------------------------	------------------------	-----------------------------	---

# ILS or LOC RWY 17L

TSTC WACO (CNW)

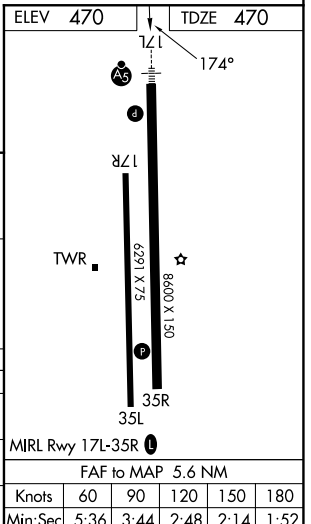
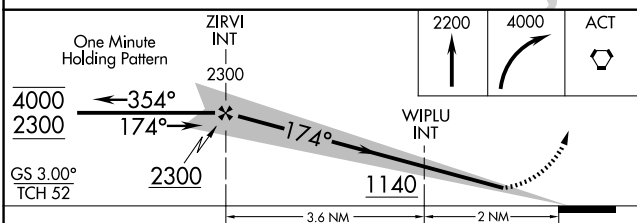
		MISSED APPROACH: Climb to 2200 then climbing right turn to 4000 direct ACT VORTAC and hold, continue climb-in-hold to 4000. (TACAN aircraft continue on ACT VORTAC R-305 to IGORR/ACT 14 DME and hold SE, RT, 305° inbound)		
		AWOS-3PT <b>134.225</b>	WACO APP CON ★ <b>127.65 227.125</b>	TSTC TOWER ★ <b>124.0 (CTAF) 255.7</b>

AWOS-3PT <b>134.225</b>	WACO APP CON ★ <b>127.65 227.125</b>	TSTC TOWER ★ <b>124.0 (CTAF) 255.7</b>	GND CON <b>121.7</b>	UNICOM <b>122.95</b>
----------------------------	---	---	-------------------------	-------------------------



SC-3, 14 MAY 2026 to 11 JUN 2026

SC-3, 14 MAY 2026 to 11 JUN 2026



CATEGORY	A	B	C	D
S-ILS 17L		670-1/2	200 (200-1/2)	
S-LOC 17L	860-1/2	390 (400-1/2)	860-5/8	390 (400-5/8)
CIRCLING	940-1 470 (500-1)	1040-1 570 (600-1)	1040-1 1/2 570 (600-1 1/2)	1120-2 650 (700-2)