

WAAS CH <b>73020</b> <b>W17A</b>	APP CRS <b>174°</b>	Rwy Ldg 8600 TDZE 470 Apt Elev 470
--	------------------------	---

# RNAV (GPS) RWY 17L

TSTC WACO (CNW)

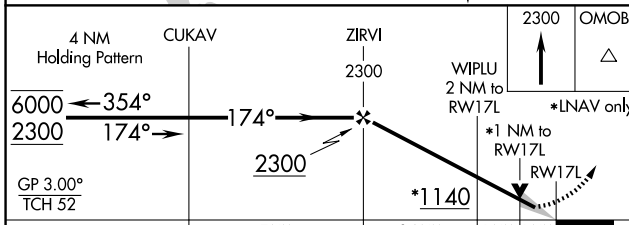
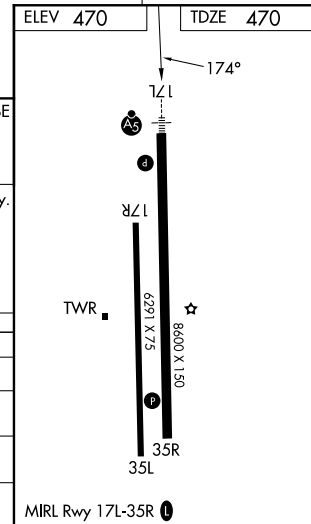
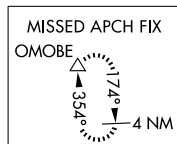
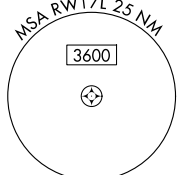
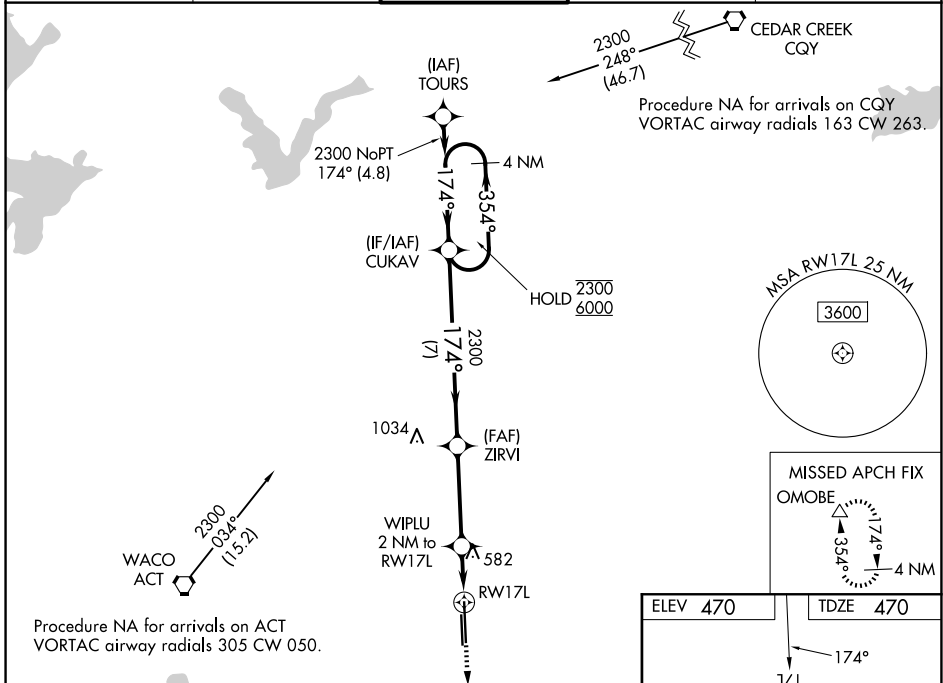
RNP APCH.

For uncompensated Baro-VNAV systems, LNAV/VNAV NA below -15°C or above 54°C. For inop ALS, increase LNAV/VNAV all Cats visibility to ¾ SM and LNAV Cats C/D visibility to 1 SM.

MALSRL

MISSED APPROACH: Climb to 2300 direct OMOBE and hold.

AWOS-3PT <b>134.225</b>	WACO APP CON ★ <b>127.65 227.125</b>	TSTC TOWER ★ <b>124.0 (CTAF) 255.7</b>	GND CON <b>121.7 0</b>	UNICOM <b>122.95</b>
----------------------------	---	---	---------------------------	-------------------------



CATEGORY	A	B	C	D
LPV DA		670-½	200 (200-½)	
LNAV/VNAV DA		720-½	250 (300-½)	
LNAV MDA	840-½	370 (400-½)	840-⅝	370 (400-⅝)
CIRCLING	940-1 470 (500-1)	1040-1 570 (600-1)	1040-1½ 570 (600-1½)	1120-2 650 (700-2)

SC-3, 14 MAY 2026 to 11 JUN 2026

SC-3, 14 MAY 2026 to 11 JUN 2026