

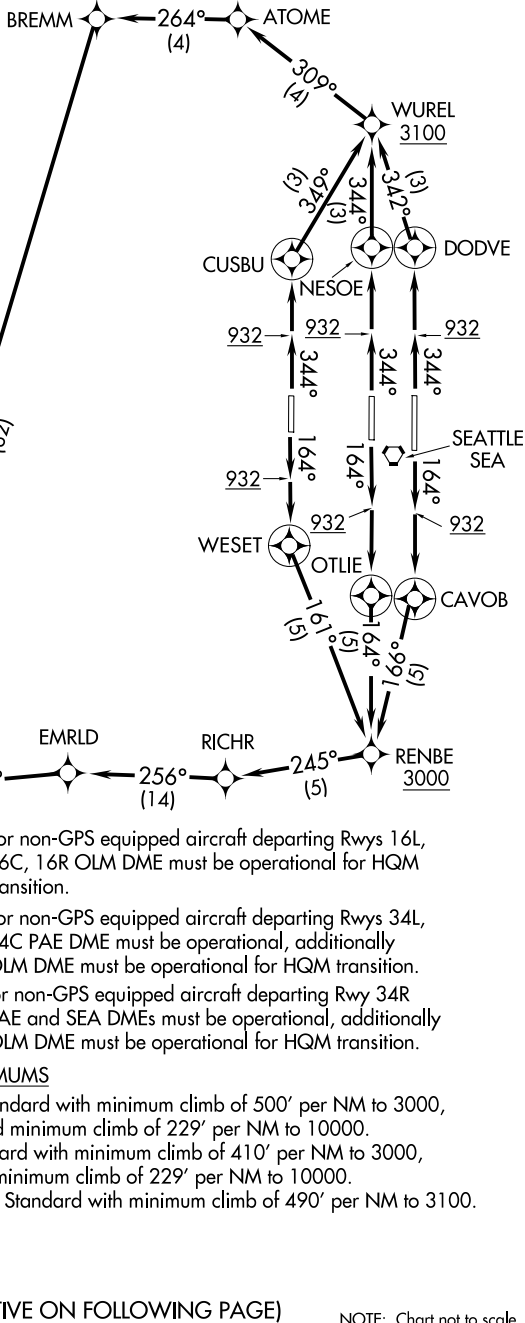
# HAROB SIX DEPARTURE (RNAV)

AL-582 (FAA)

D-ATIS  
118.0  
CLNC DEL  
128.0  
CPDLC  
SEATTLE DEP CON  
120.4 395.0

**TOP ALTITUDE:  
ASSIGNED BY ATC**

- NOTE: RNAV 1.
- NOTE: RADAR required.
- NOTE: DME/DME/IRU or GPS required.



NOTE: For non-GPS equipped aircraft departing Rwy 16L, 16C, 16R OLM DME must be operational for HQM transition.

NOTE: For non-GPS equipped aircraft departing Rwy 34L, 34C PAE DME must be operational, additionally OLM DME must be operational for HQM transition.

NOTE: For non-GPS equipped aircraft departing Rwy 34R PAE and SEA DMEs must be operational, additionally OLM DME must be operational for HQM transition.

### TAKEOFF MINIMUMS

Rwy 16L/R: Standard with minimum climb of 500' per NM to 3000, and minimum climb of 229' per NM to 10000.

Rwy 16C: Standard with minimum climb of 410' per NM to 3000, and minimum climb of 229' per NM to 10000.

Rwys 34L/C/R: Standard with minimum climb of 490' per NM to 3100.

(NARRATIVE ON FOLLOWING PAGE)

NOTE: Chart not to scale.

NW-1, 14 MAY 2026 to 11 JUN 2026

NW-1, 14 MAY 2026 to 11 JUN 2026

# HAROB SIX DEPARTURE (RNAV)



DEPARTURE ROUTE DESCRIPTION

TAKEOFF RUNWAY 16C: Climb heading 164° to at/above 932, then direct OTLIE, then on track 164° to cross RENBE at/above 3000, then on depicted route to HAROB, cross HAROB at or above 10000, thence. . . .

TAKEOFF RUNWAY 16L: Climb heading 164° to at/above 932, then direct CAVOB, then on track 166° to cross RENBE at/above 3000, then on depicted route to HAROB, cross HAROB at or above 10000, thence. . . .

TAKEOFF RUNWAY 16R: Climb heading 164° to at/above 932, then direct WESET, then on track 161° to cross RENBE at/above 3000, then on depicted route to HAROB, cross HAROB at or above 10000, thence. . . .

TAKEOFF RUNWAY 34C: Climb heading 344° to at/above 932, then direct NESOE, then on track 344° to cross WUREL at/above 3100, then on depicted route to HAROB, cross HAROB at or above 10000, thence. . . .

TAKEOFF RUNWAY 34L: Climb heading 344° to at/above 932, then direct CUSBU, then on track 349° to cross WUREL at/above 3100, then on depicted route to HAROB, cross HAROB at or above 10000, thence. . . .

TAKEOFF RUNWAY 34R: Climb heading 344° to at/above 932, then direct DODVE, then on track 342° to cross WUREL at/above 3100, then on depicted route to HAROB, cross HAROB at or above 10000, thence. . . .

. . . . on (transition). Maintain assigned altitude, expect filed altitude/flight level 15 NM from SEA VORTAC.

ERAVE TRANSITION (HAROB6.ERAVE)

FEPOT TRANSITION (HAROB6.FEPOT)

HISKU TRANSITION (HAROB6.HISKU)

HOQUIAM TRANSITION (HAROB6.HQM)

NW-1, 14 MAY 2026 to 11 JUN 2026

NW-1, 14 MAY 2026 to 11 JUN 2026