

LOC/DME I-SZI 111.7 Chan 54	APP CRS 164°	Rwy Ldg TDZE 430 Apt Elev 432
---	------------------------	---

ILS RWY 16C (SA CAT I)

SEATTLE-TACOMA INTL (SEA)

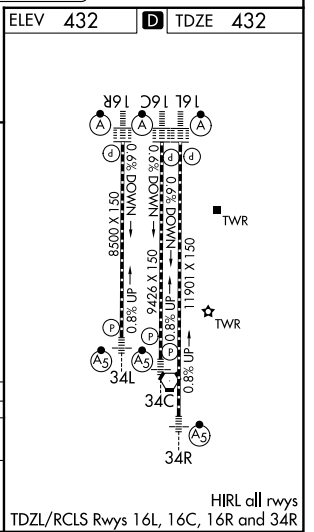
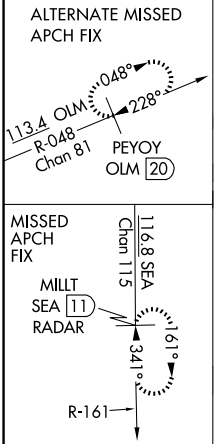
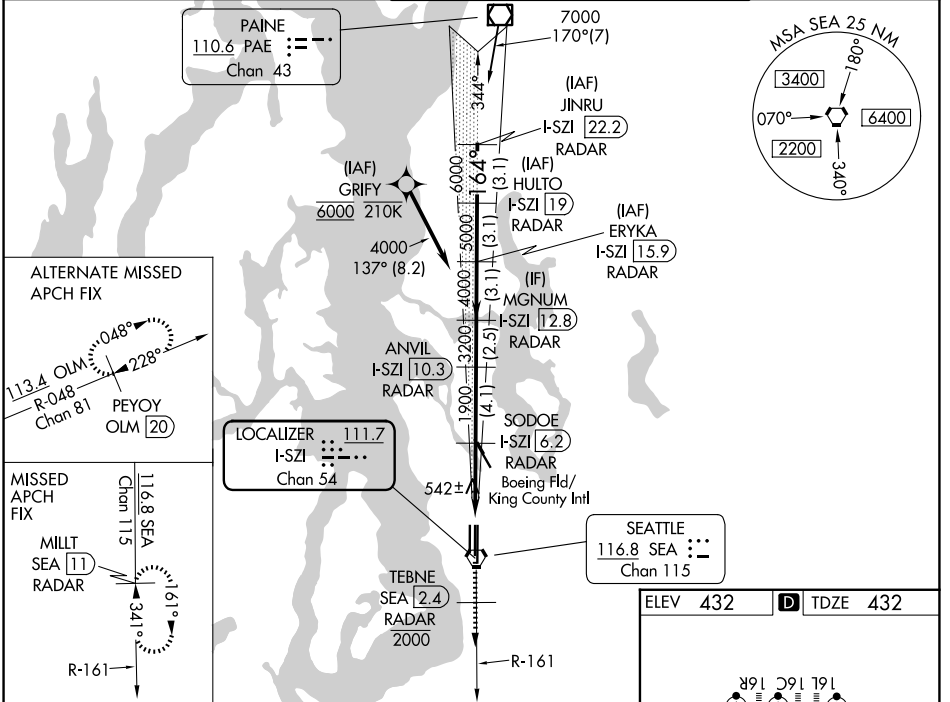
DME or RADAR required. From GRIFY: RNAV 1-GPS required.

Simultaneous approach authorized with Rwy 16R. Simultaneous operations require use of vertical guidance, maintain last assigned altitude until established on glideslope. Requires specific OPSPEC, MSPEC or LOA approval and use of HUD to DH.

ALSF-2

MISSED APPROACH: Climb on heading 160° and SEA VORTAC R-161 to cross TEBNE/SEA 2.4 DME/RADAR at or below 2000, then climb to 5000 on SEA VORTAC R-161 to MILLT/SEA 11 DME/RADAR and hold, continue climb-in-hold to 5000.

D-ATIS 118.0	SEATTLE APP CON 133.65 273.45	SEATTLE TOWER 119.9 239.3 (16L, 16C, 34C, 34R) 120.95 239.3 (16R, 34L)	GND CON 121.7
------------------------	---	--	-------------------------



SEA R-161 hdg 160°	TEBNE SEA (2.4) 2000	5000 SEA R-161	MILLT SEA (11)	VGSI and ILS glidepath not coincident (VGSI Angle 3.00/TCH 71).			
SODOE I-SZI (6.2) RADAR	ANVIL I-SZI (10.3) RADAR	I-SZI (12.8) RADAR	ERYKA I-SZI (15.9) RADAR	HULTO I-SZI (19) RADAR	JINRU I-SZI (22.2) RADAR		
1900	3200	4000	5000	6000	7000	GS 3.00° TCH 55	
1.1 NM	1.2 NM	1.3 NM	1.4 NM	1.5 NM	1.6 NM	1.7 NM	1.8 NM
CATEGORY	A	B	C	D			
S-ILS 16C	RA 292/14 150 DA 580						
SA CATEGORY I ILS - SPECIAL AIRCREW & AIRCRAFT CERTIFICATION REQUIRED							

NW-1, 14 MAY 2026 to 11 JUN 2026

NW-1, 14 MAY 2026 to 11 JUN 2026

HIRL all rwy's
TDZL/RCLS Rwy's 16L, 16C, 16R and 34R