

LOC/DME I-CJL 110.75 Chan 44(Y)	APP CRS 164°	Rwy Ldg TDZE Apt Elev	8500 415 432
--	------------------------	-----------------------------	---

ILS RWY 16R (CAT II & III)

SEATTLE-TACOMA INTL (SEA)

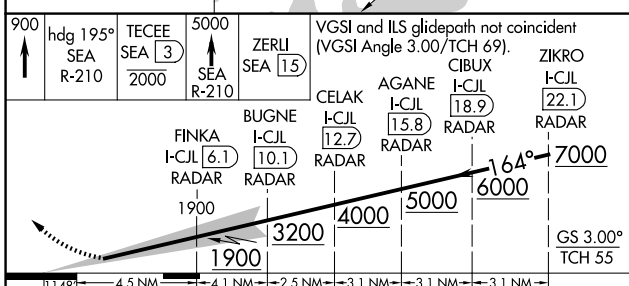
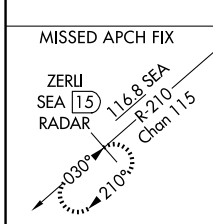
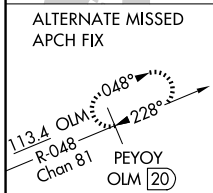
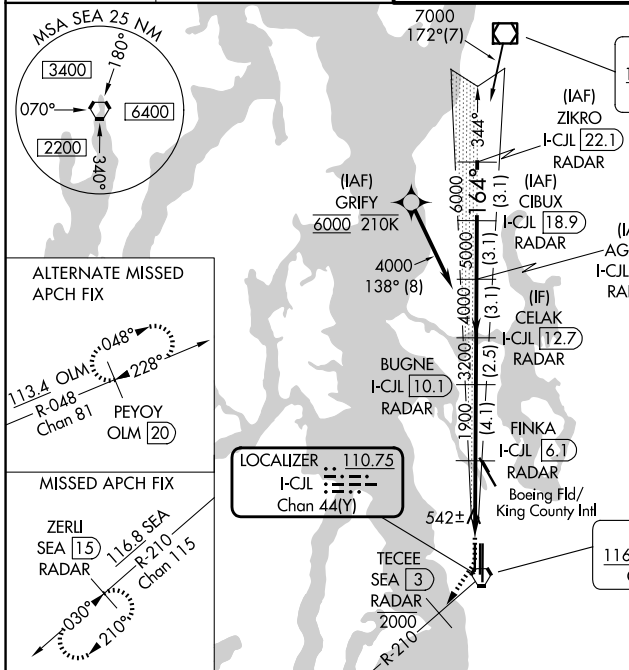
DME or RADAR required. From GRIFY: RNAV 1-GPS required.

Simultaneous approach authorized with Rwy 16L and 16C. Simultaneous operations require use of vertical guidance, maintain last assigned altitude until established on glideslope. Cat II: RVR 1000 authorized with specific OPSPEC, MSPEC or LOA approval and use of Autoland or HUD to touchdown.

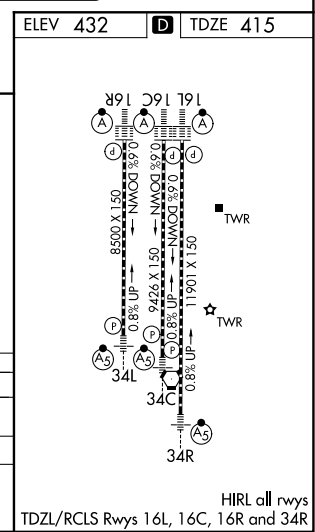
ALSF-2

MISSED APPROACH: Climb to 900 then climb on heading 195° and on SEA VORTAC R-210 to cross TECEE/SEA 3 DME/RADAR at or below 2000 then climb to 5000 on SEA VORTAC R-210 to ZERLI/SEA 15 DME/RADAR and hold, continue climb-in-hold to 5000.

D-ATIS 118.0	SEATTLE APP CON 133.65 273.45	SEATTLE TOWER 119.9 239.3 (16L, 16C, 34C, 34R) 120.95 239.3 (16R, 34L)	GND CON 121.7
------------------------	---	--	-------------------------



900	TECEE SEA 3 2000	5000	ZERLI SEA 15	VGSi and ILS glidepath not coincident (VGSi Angle 3.00/TCH 69).			
1900	FINKA I-CJL 6.1 RADAR	3200	BUGNE I-CJL 10.1 RADAR	CELAK I-CJL 12.7 RADAR	AGANE I-CJL 15.8 RADAR	I-CJL 18.9 RADAR	ZIKRO I-CJL 22.1 RADAR
4.5 NM	4.1 NM	2.5 NM	3.1 NM	3.1 NM	3.1 NM	3.1 NM	
CATEGORY	A	B	C	D			
S-ILS 16R	CAT II RA 139/12 100 DA 515						
S-ILS 16R	CAT III RVR 03						



NW-1, 14 MAY 2026 to 11 JUN 2026

NW-1, 14 MAY 2026 to 11 JUN 2026

HIRL all rwy's
TDZL/RCLS Rwy's 16L, 16C, 16R and 34R