

LOC/DME I-CJL 110.75 Chan 44(Y)	APP CRS 164°	Rwy Ldg TDZE 8500 415	Apt Elev 432
--	------------------------	---	------------------------

ILS or LOC RWY 16R

SEATTLE-TACOMA INTL (SEA)

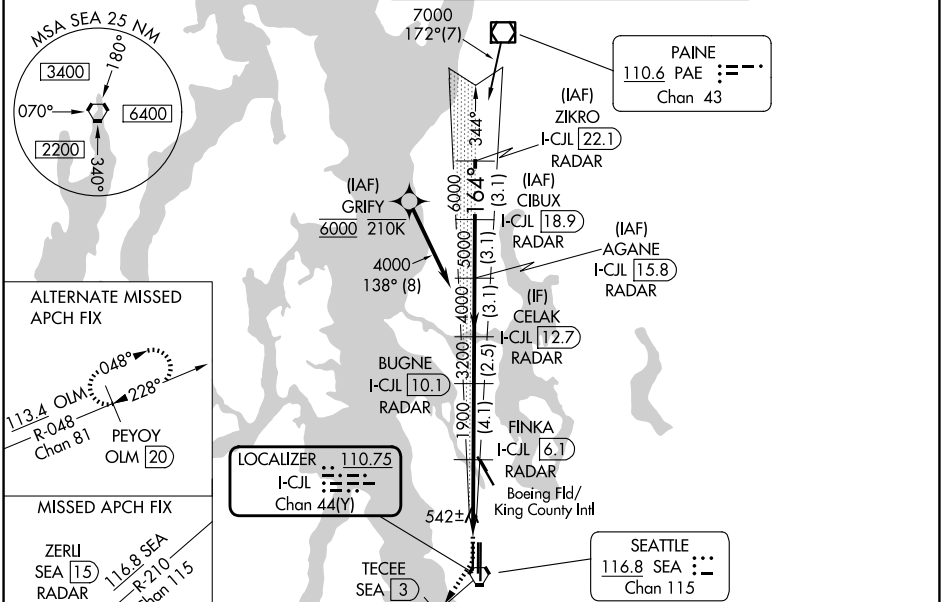
DME or RADAR required. From GRIFY: RNAV 1-GPS required.

Simultaneous approach authorized with Rwy 16L and 16C. Simultaneous operations require use of vertical guidance, maintain last assigned altitude until established on glideslope.

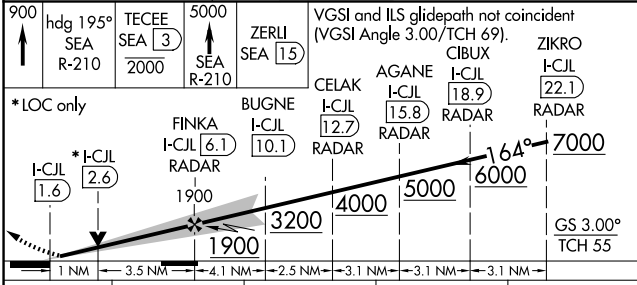
ALSF-2

MISSED APPROACH: Climb to 900 then climb on heading 195° and on SEA VORTAC R-210 to cross TECEE/SEA 3 DME/RADAR at or below 2000 then climb to 5000 on SEA VORTAC R-210 to ZERLI/SEA 15 DME/RADAR and hold, continue climb-in-hold to 5000.

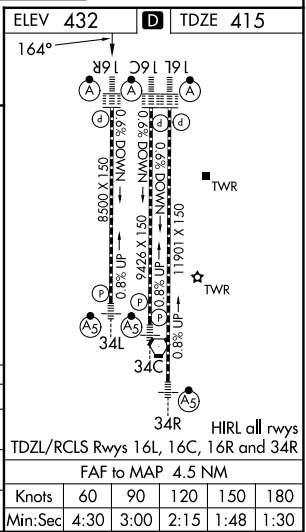
D-ATIS 118.0	SEATTLE APP CON 133.65 273.45	SEATTLE TOWER 119.9 239.3 (16L, 16C, 34C, 34R) 120.95 239.3 (16R, 34L)	GND CON 121.7
------------------------	---	--	-------------------------



ELEV 432	D	TDZE 415
----------	---	----------



CATEGORY	A	B	C	D
S-ILS 16R	615/18 200 (200-½)			
S-LOC 16R	800/24	385 (400-½)	800/35	385 (400-¾)
CIRCLING	1000-1	568 (600-1)	1000-1½	1000-2
			568 (600-½)	568 (600-2)



NW-1, 14 MAY 2026 to 11 JUN 2026

NW-1, 14 MAY 2026 to 11 JUN 2026