

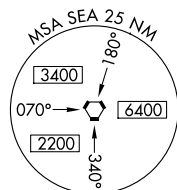
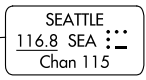
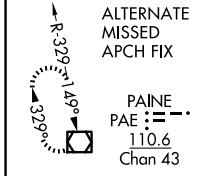
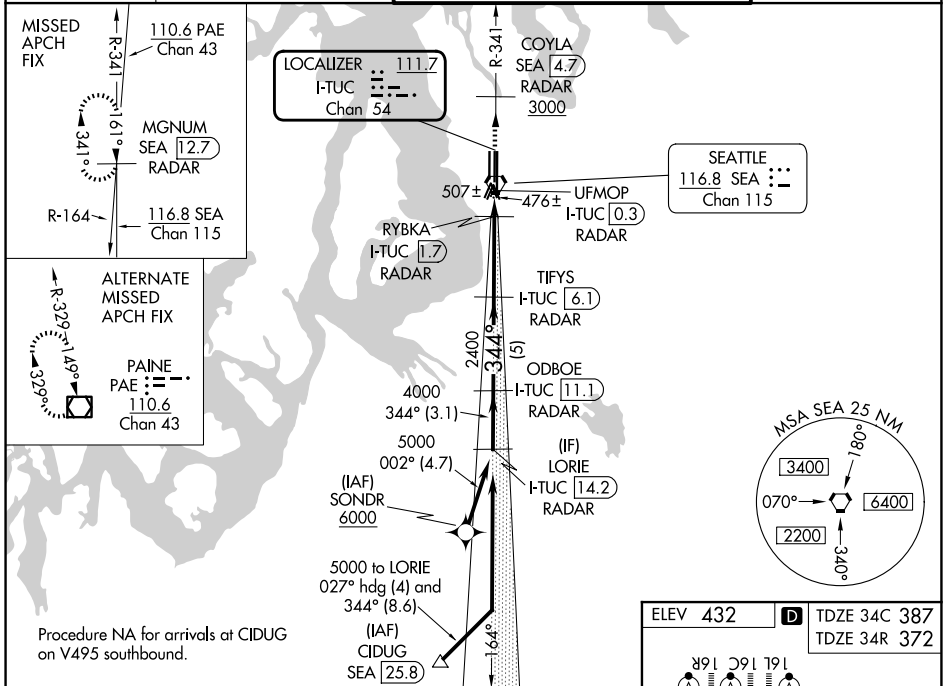
LOC/DME I-TUC <b>111.7</b> Chan <b>54</b>	APP CRS <b>344°</b>	Rwy Ldg TDZE Apt Elev	34C <b>9426</b> <b>387</b> <b>432</b>	34R <b>11901</b> <b>372</b> <b>432</b>
---	------------------------	-----------------------------	--	---

# ILS or LOC RWY 34C

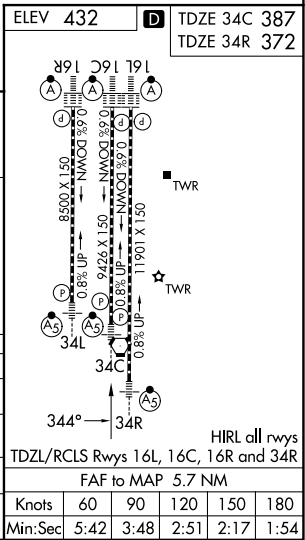
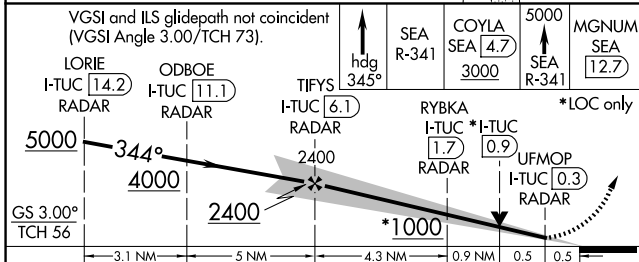
SEATTLE-TACOMA INTL (SEA)

DME or RADAR required. From SONDR: RNAV 1-GPS required.	MALSR Rwy 34C/R	MISSED APPROACH: Climb on heading 345° and outbound on SEA VORTAC R-341 to cross COYLA/SEA 4.7 DME/RADAR at or above 3000 then climb to 5000 on SEA VORTAC R-341 to MGNUM/SEA 12.7 DME/RADAR and hold, continue climb-in-hold to 5000.
▼ Inop table does not apply to ALS Rwy 34R. Simultaneous approach authorized with Rwy 34L.		

D-ATIS <b>118.0</b>	SEATTLE APP CON <b>133.65 273.45</b>	SEATTLE TOWER <b>119.9 239.3</b> (16L, 16C, 34C, 34R) <b>120.95 239.3</b> (16R, 34L)	GND CON <b>121.7</b>
------------------------	---	--	-------------------------



Procedure NA for arrivals at CIDUG on V495 southbound.



CATEGORY	A	B	C	D
S-ILS 34C	604/24		217 (200-½)	
S-LOC 34C	760/24 373 (400-½)		760/35 373 (400-⅝)	
SIDESTEP 34R	760/50 388 (400-1)		760/60 388 (400-1¼)	
CIRCLING	1000-1 568 (600-1)		1000-2 568 (600-2)	

ELEV 432					D TDZE 34C 387					TDZE 34R 372				
34L					34C					34R				
344°					34°					HIRL all rwws				
FDZL/RCLS Rwws 16L, 16C, 16R and 34R														
FAF to MAP 5.7 NM														
Knots			60	90	120	150	180							
Min:Sec			5:42	3:48	2:51	2:17	1:54							

NW-1, 14 MAY 2026 to 11 JUN 2026

NW-1, 14 MAY 2026 to 11 JUN 2026