


# JAWBN SEVEN ARRIVAL

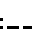
AL-582 (FAA)

SEATTLE, WASHINGTON

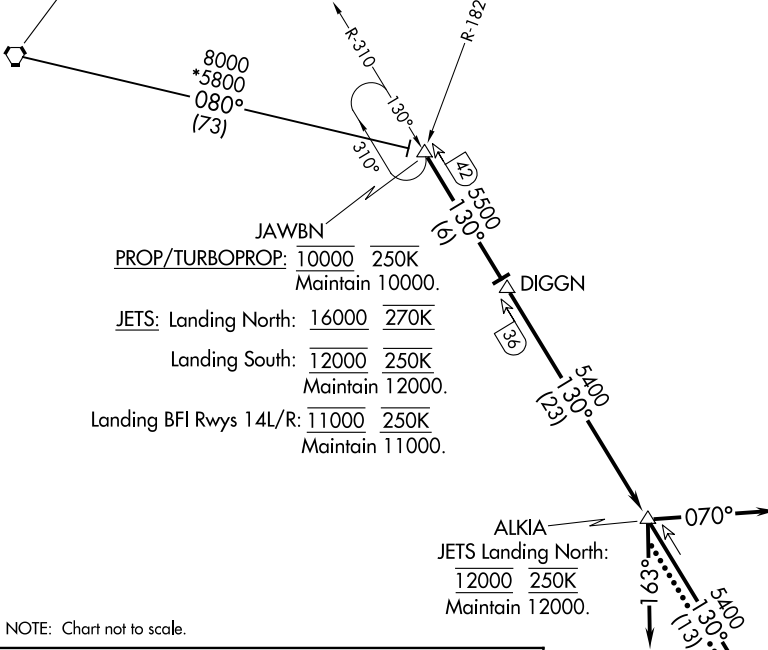
ROSLN 

RADAR and DME required.

SEATTLE APP CON  
 125.6 273.45  
 BFI ATIS  
 127.75  
 KTCM D-ATIS  
 135.825 270.1  
 SEA D-ATIS  
 118.0

TATOOSH  
 112.2 TOU   
 Chan 59

PENN COVE  
 117.2 CVV   
 Chan 119




JAWBN  
 PROP/TURBOPROP: 10000 250K  
 Maintain 10000.  
 JETS: Landing North: 16000 270K  
 Landing South: 12000 250K  
 Maintain 12000.  
 Landing BFI Rwy 14L/R: 11000 250K  
 Maintain 11000.

ALKIA  
 JETS Landing North:  
12000 250K  
 Maintain 12000.

BOEING FLD/KING  
 COUNTY INTL

SEATTLE-TACOMA INTL

SEATTLE  
 116.8 SEA   
 Chan 115

MCCHORD FLD  
 (JOINT BASE LEWIS-MCCHORD)

NW-1, 14 MAY 2026 to 11 JUN 2026

NW-1, 14 MAY 2026 to 11 JUN 2026

NOTE: Chart not to scale.

## ARRIVAL ROUTE DESCRIPTION

TATOOSH TRANSITION (TOU.JAWBN7): From over TOU VORTAC on TOU R-080 to JAWBN. Thence . . .  
 . . . from over JAWBN on SEA R-310 to DIGGN then on SEA R-310 to ALKIA thence . . .

LANDING SOUTH: depart ALKIA heading 070° for RADAR vectors to final approach course.

LANDING NORTH: depart ALKIA heading 163° for RADAR vectors to final approach course.

LANDING MCCHORD FLD: depart ALKIA proceed direct SEA VORTAC.

LOST COMMUNICATIONS: After ALKIA, proceed direct SEA VORTAC.

# JAWBN SEVEN ARRIVAL

SEATTLE, WASHINGTON