

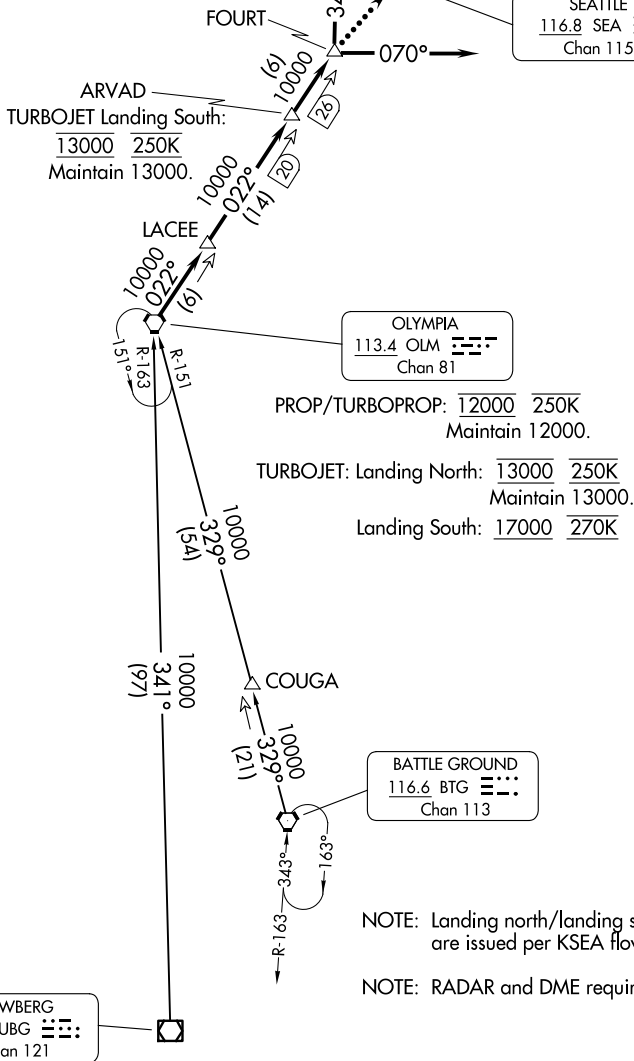
OLYMPIA TWO ARRIVAL

SEATTLE APP CON
 125.6 273.45
 BFI ATIS
 127.75
 PAE ATIS
 128.65
 RNT ATIS
 126.95
 SEA D-ATIS
 118.0

SEATTLE PAINE FLD INTL

BOEING FLD/
 KING COUNTY INTL
 RENTON MUNI
 SEATTLE-TACOMA INTL

SEATTLE
 116.8 SEA
 Chan 115



NW-1, 14 MAY 2026 to 11 JUN 2026

NW-1, 14 MAY 2026 to 11 JUN 2026

(NARRATIVE ON FOLLOWING PAGE)

NOTE: Chart not to scale.

OLYMPIA TWO ARRIVAL

ARRIVAL ROUTE DESCRIPTION

BATTLE GROUND TRANSITION (BTG.OLM2): From over BTG VORTAC on BTG R-329 to COUGA, then on BTG R-329 and OLM R-151 to OLM VORTAC. Thence. . . .

NEWBERG TRANSITION (UBG.OLM2): From over UBG VOR/DME on UBG R-341 and OLM R-163 to OLM VORTAC. Thence. . . .

. . . . from over OLM VORTAC on OLM R-022 to LACEE, then on OLM R-022 to ARVAD, then on OLM R-022 to FOURT, thence. . . .

. . . . LANDING NORTH SEA/BFI: Depart FOURT heading 070° for vectors to final approach course.

. . . . LANDING SOUTH SEA/BFI: Depart FOURT heading 343° for vectors to final approach course.

. . . . LANDING SEATTLE PAINE FLD INTL: Depart FOURT heading 343° for vectors to final approach course.

. . . . LANDING RENTON MUNI: Depart FOURT heading 343° for vectors to final approach course.

LOST COMMUNICATIONS: From over FOURT, proceed direct SEA VORTAC.

NW-1, 14 MAY 2026 to 11 JUN 2026

NW-1, 14 MAY 2026 to 11 JUN 2026