

APP CRS 344°	Rwy Ldg 9426
	TDZE 387
	Apt Elev 432

RNAV (RNP) Z RWY 34C

SEATTLE-TACOMA INTL (SEA)

RNP AR APCH.

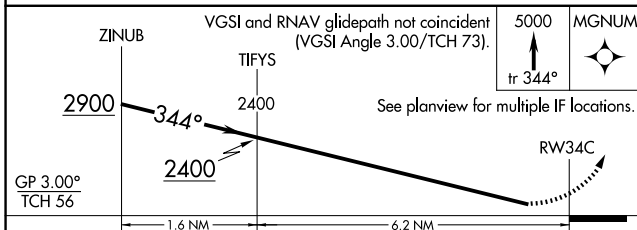
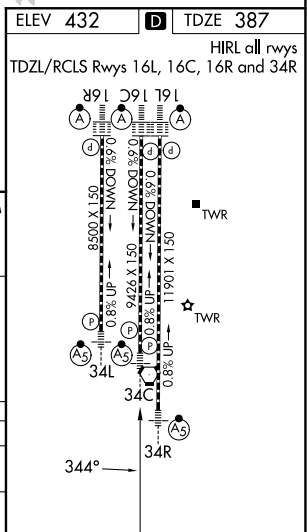
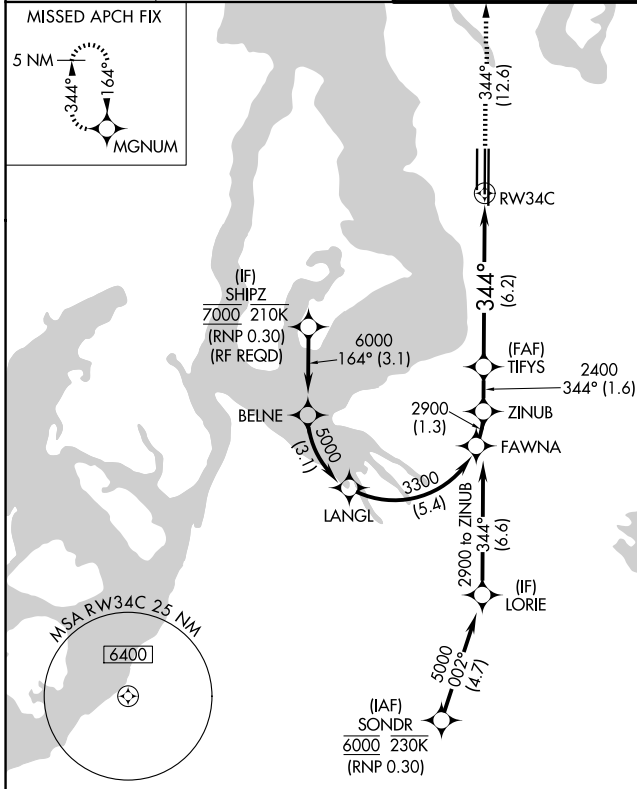
▼ For uncompensated Baro-VNAV systems, procedure NA below -6°C or above 54°C. Simultaneous approach authorized except arrivals at SHIPZ. Use of FD or AP required during simultaneous operations.

MALSR



MISSED APPROACH: Climb to 5000 on track 344° to MGNUM and hold, continue climb-in-hold to 5000.

D-ATIS 118.0	SEATTLE APP CON 133.65 273.45	SEATTLE TOWER 119.9 239.3 (16L, 16C, 34C, 34R) 120.95 239.3 (16R, 34L)	GND CON 121.7
------------------------	---	--	-------------------------



CATEGORY	A	B	C	D
RNP 0.30 DA	829/50 442 (400-1)			
AUTHORIZATION REQUIRED				

NW-1, 14 MAY 2026 to 11 JUN 2026

NW-1, 14 MAY 2026 to 11 JUN 2026