

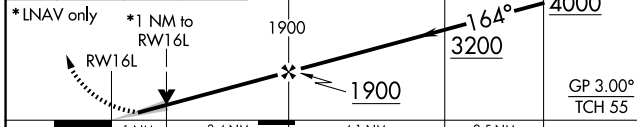
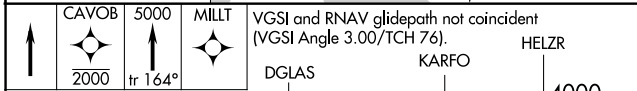
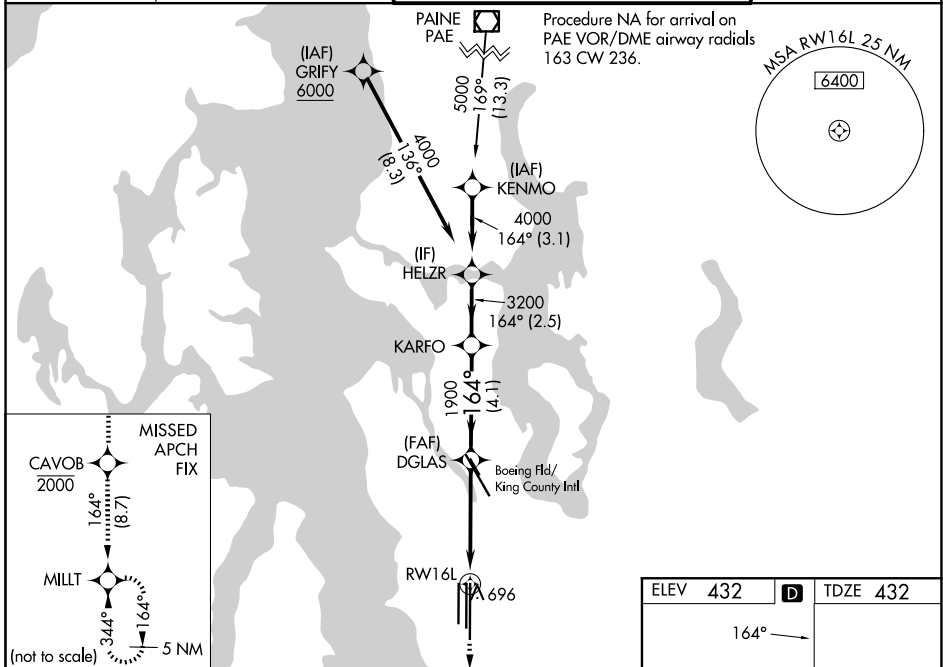
WAAS CH 63202 W16A	APP CRS 164°	Rwy Ldg 11901 TDZE 432 Apt Elev 432
--	------------------------	--

RNAV (GPS) Y RWY 16L

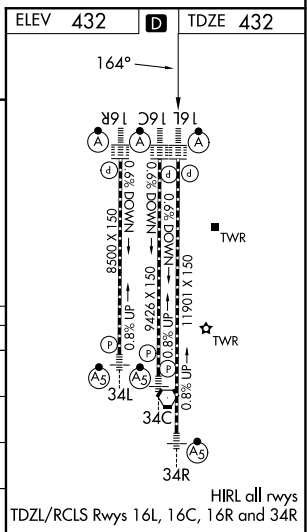
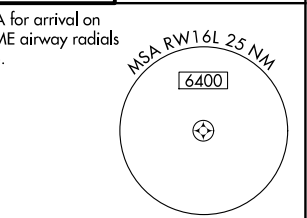
SEATTLE-TACOMA INTL (SEA)

RNP APCH.	ALSF-2	MISSED APPROACH: Climb direct CAVOB to cross CAVOB at or below 2000 then climb to 5000 on track 164° to MILLT and hold, continue climb-in-hold to 5000.
▼ For uncompensated Baro-VNAV systems, LNAV/VNAV NA below -6°C (22°F) or above 54°C (130°F). Simultaneous approach authorized with Rwy 16R. Use of FD or AP providing RNAV track guidance required during simultaneous operations. LNAV procedure NA during simultaneous operations. For inop ALS, increase LPV all Cats visibility to RVR 4500, and increase LNAV Cats C/D visibility to RVR 6000.		

D-ATIS 118.0	SEATTLE APP CON 133.65 273.45	SEATTLE TOWER 119.9 239.3 (16L, 16C, 34C, 34R) 120.95 239.3 (16R, 34L)	GND CON 121.7
------------------------	---	--	-------------------------



CATEGORY	A	B	C	D
LPV DA		700/24	268 (300-½)	
LNAV/VNAV DA		766/32	334 (400-⅙)	
LNAV MDA	840/24	408 (500-½)	840/40	408 (500-¾)
CIRCLING	1000-1	568 (600-1)	1000-1½ 568 (600-½)	1000-2 568 (600-2)



NW-1, 14 MAY 2026 to 11 JUN 2026

NW-1, 14 MAY 2026 to 11 JUN 2026