

WAAS CH 42710 W34D	APP CRS 344°	Rwy Ldg 11901 TDZE 372 Apt Elev 433
--	------------------------	--

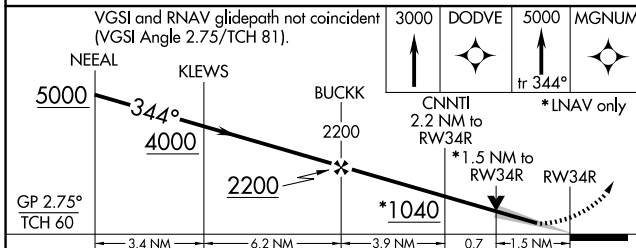
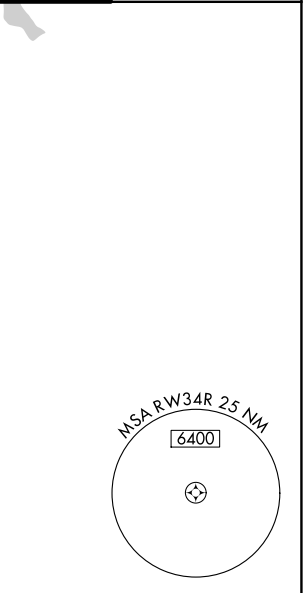
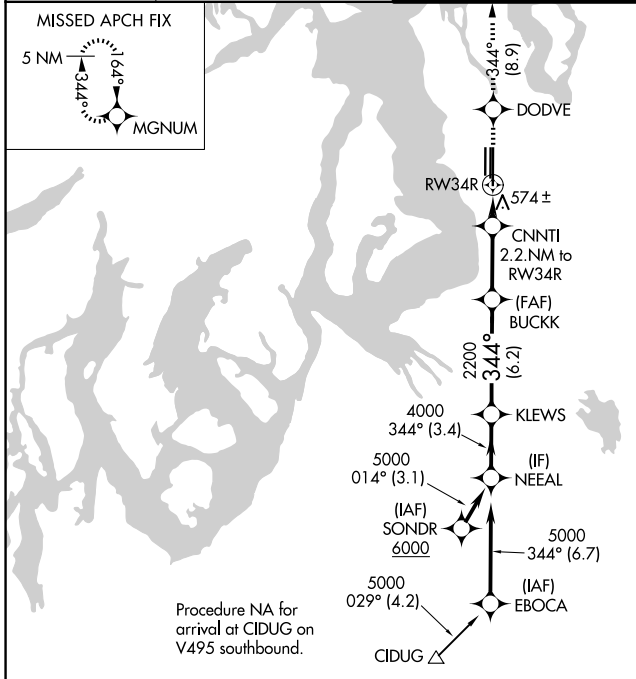
RNAV (GPS) Y RWY 34R

SEATTLE-TACOMA INTL (SEA)

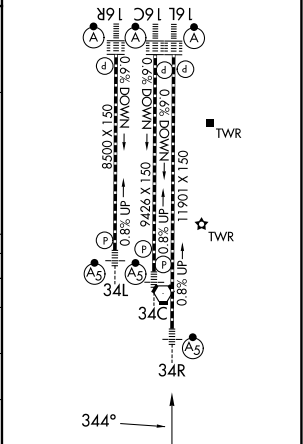
▼ DME/DME RNP-0.3 NA. For uncompensated Baro-VNAV systems, LNAV/VNAV NA below -6°C (22°F) or above 54°C (130°F). LNAV procedure NA during simultaneous operations. Use of FD or AP providing RNAV track guidance required during simultaneous operations. Simultaneous approach authorized with Rwy 34R. For nonoperative ALS, increase LNAV Cat C and D visibility to 1 3/8 SM. # RVR 1800 authorized with use of FD or AP or HUD to DA.

MALSR
MISSED APPROACH: Climb to 3000 direct DODVE then climb to 5000 on track 344° to MGNUM and hold, continue climb-in-hold to 5000.

D-ATIS 118.0	SEATTLE APP CON 133.65 273.45	SEATTLE TOWER 119.9 239.3 (16L, 16C, 34C, 34R) 120.95 239.3 (16R, 34L)	GND CON 121.7
------------------------	---	--	-------------------------



ELEV 433	D TDZE 372
HIRL all rwys	
TDZL/RCLS Rwys 16L, 16C, 16R and 34R	



CATEGORY	A	B	C	D
LPV DA#		572/24	200 (200-1/2)	
LNAV/VNAV DA		915-1 1/2	543 (500-1 1/2)	
LNAV MDA	840/24	468 (500-1/2)	840/50	468 (500-1)
CIRCLING	1000-1	567 (600-1)	1000-1 1/2 567 (600-1 1/2)	1000-2 567 (600-2)

NW-1, 14 MAY 2026 to 11 JUN 2026

NW-1, 14 MAY 2026 to 11 JUN 2026