

LOC I-ILN 110.7	APP CRS 224°	Rwy Ldg 10701
		TDZE 1077
		Apt Elev 1077

ILS RWY 22R (CAT II & III)

WILMINGTON AIR PARK (ILN)

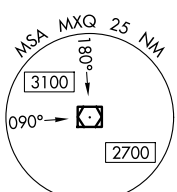
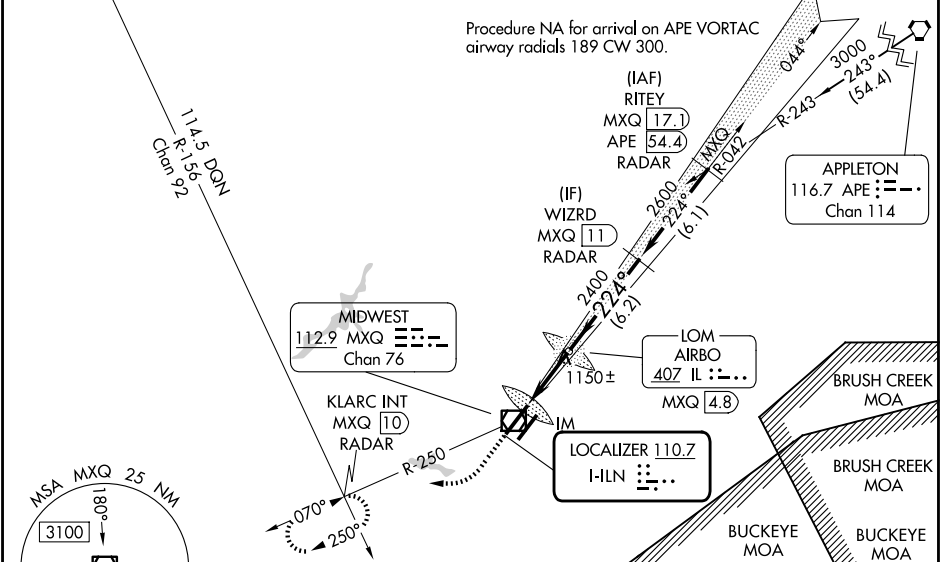
DME or RADAR required for procedure entry.

∇ Simultaneous approach authorized.
DME from MXQ VOR/DME.
▲ DME use requires simultaneous reception of I-ILN and MXQ DME.

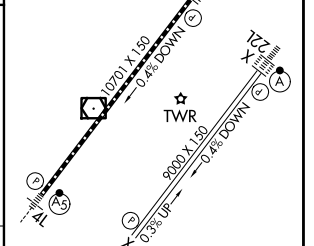
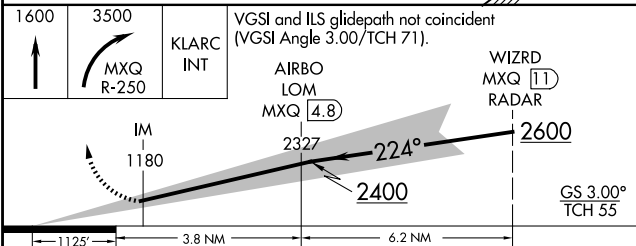
ALSF-2

MISSED APPROACH: Climb to 1600 then climbing right turn to 3500 on MXQ VOR/DME R-250 to KLARC INT/MXQ 10 DME/RADAR and hold, continue climb-in-hold to 3500.

D-ATIS 124.925	COLUMBUS APP CON 118.85 269.275	WILMINGTON TOWER 119.475	GND CON 121.6
--------------------------	---	------------------------------------	-------------------------



ELEV 1077	D	TDZE 1077
-----------	----------	-----------



CATEGORY	A	B	C	D
S-ILS 22R	CAT II RA 106/12 100 DA 1177			
S-ILS 22R	CAT III RVR 06			

CATEGORY II & III ILS - SPECIAL AIRCREW & AIRCRAFT CERTIFICATION REQUIRED

TDZ/CL Rwy 22L and 22R
HIRL Rwy 4L-22R and 4R-22L

EC-2, 14 MAY 2026 to 11 JUN 2026

EC-2, 14 MAY 2026 to 11 JUN 2026