

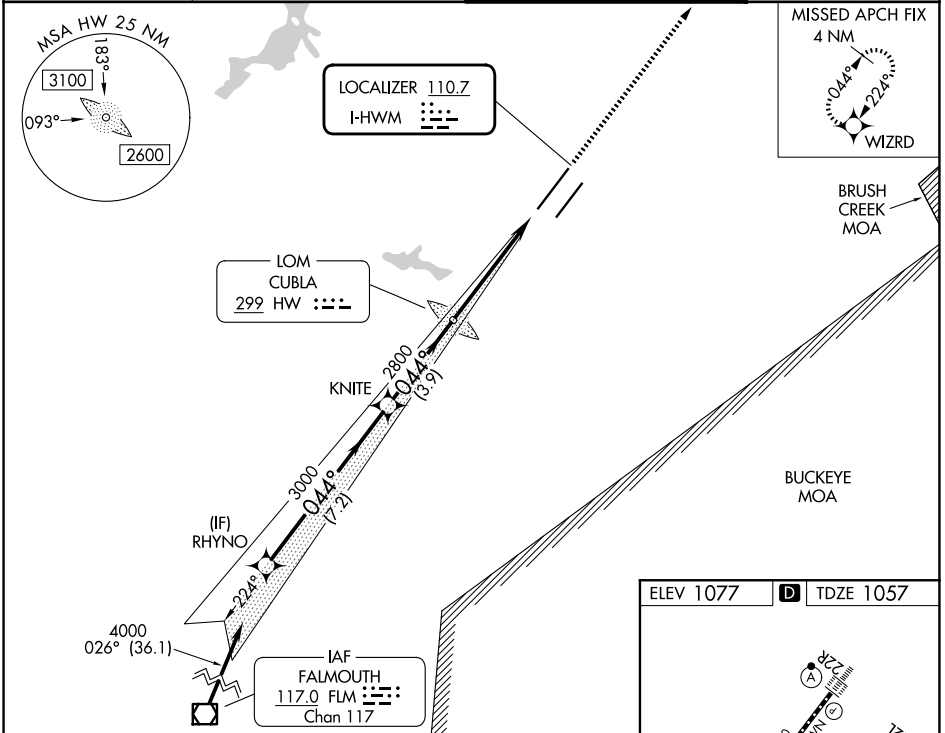
LOC I-HWM	APP CRS	Rwy Ldg	10701
110.7	044°	TDZE	1057
		Apt Elev	1077

ILS or LOC RWY 4L

WILMINGTON AIR PARK (ILN)

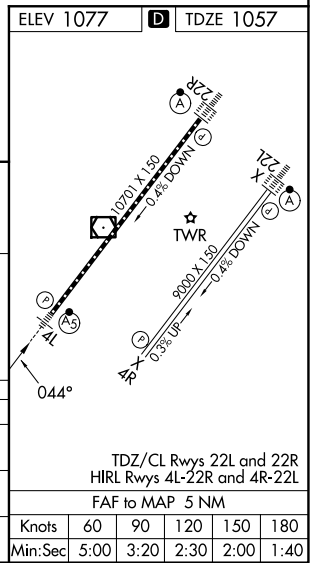
RNP APCH - GPS.		MALSR	MISSED APPROACH: Climb to 3000 direct WIZRD and hold.
For inop ALS, increase S-LOC 4L Cats C and D visibility to 1 3/8 SM.			

D-ATIS 124.925	COLUMBUS APP CON 118.85 269.275	WILMINGTON TOWER 119.475	GND CON 121.6
--------------------------	---	------------------------------------	-------------------------



VGSI and ILS glidepath not coincident (VGSI Angle 3.00/TCH 62).

RHYNO	KNITE	HW LOM CUBLA	3000	WIZRD
4000	3000	2701		
GS 3.00° TCH 50		2800		
7.2 NM		3.9 NM		5 NM
CATEGORY	A	B	C	D
S-ILS 4L	1257/24 200 (200-1/2)			
S-LOC 4L	1520/24 463 (500-1/2)		1520/50 463 (500-1)	
CIRCLING	1560-1 483 (500-1)		1860-2 783 (800-2 1/4)	1860-2 783 (800-2 1/2)



EC-2, 14 MAY 2026 to 11 JUN 2026

EC-2, 14 MAY 2026 to 11 JUN 2026