

WAAS CH 62914 W04A	APP CRS 044°	Rwy Ldg 10701 TDZE 1057 Apt Elev 1077
--	------------------------	--

RNAV (GPS) RWY 4L

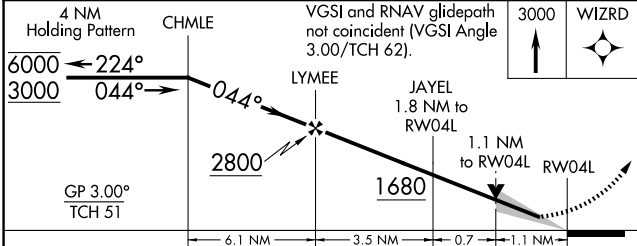
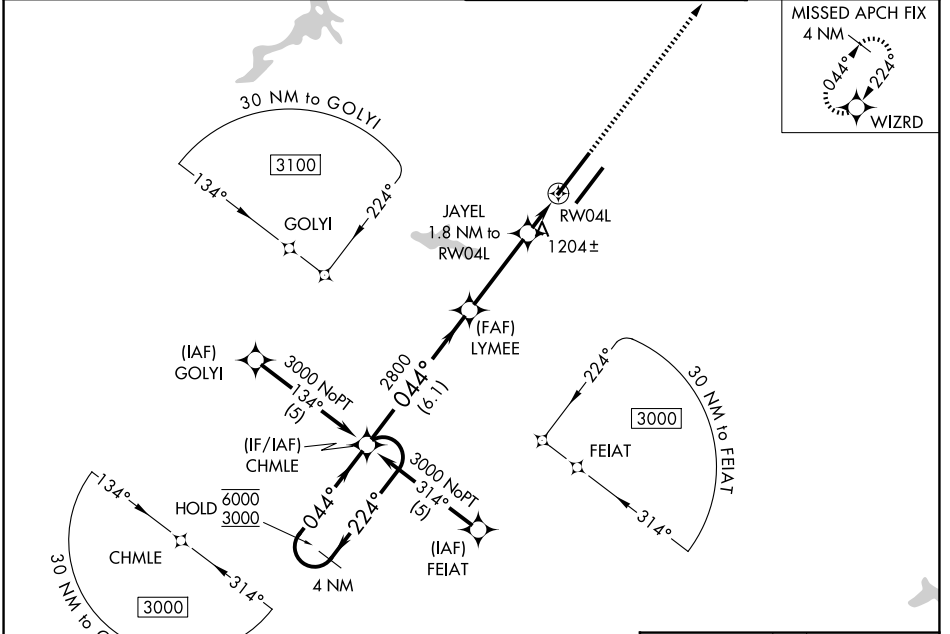
WILMINGTON AIR PARK (ILN)

RNP APCH - GPS.

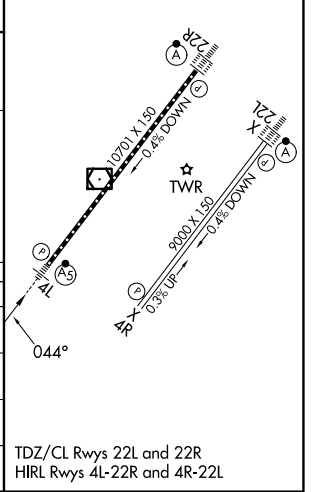
▼ For uncompensated Baro-VNAV systems, LNAV/VNAV NA below -17°C or above 54°C.
 ▲ For inop ALS, increase LNAV Cats A/B visibility to RVR 5500 and LNAV Cats C/D visibility to RVR 6000. *1800 RVR authorized with use of FD or AP or HUD to DA.

MALSR MISSED APPROACH: Climb to 3000 direct WIZRD and hold.

D-ATIS 124.925	COLUMBUS APP CON 118.85 269.275	WILMINGTON TOWER 119.475	GND CON 121.6
--------------------------	---	------------------------------------	-------------------------



ELEV 1077	D TDZE 1057
-----------	--------------------



CATEGORY	A	B	C	D
LPV DA *	1257/24		200 (200-½)	
LNAV/VNAV DA	1505/45		448 (500-¾)	
LNAV MDA	1460/24	403 (400-½)	1460/40	403 (400-¾)
CIRCLING	1560-1	483 (500-1)	1860-2¼ 783 (800-2¼)	1860-2½ 783 (800-2½)

TDZ/CL Rwy 22L and 22R
HIRL Rwy 4L-22R and 4R-22L

EC-2, 14 MAY 2026 to 11 JUN 2026

EC-2, 14 MAY 2026 to 11 JUN 2026