

LOC/DME I-HNQ <b>108.75</b> Chan <b>24(Y)</b>	APP CRS <b>174°</b>	Rwy Ldg TDZE <b>5997</b> <b>1073</b> Apt Elev <b>1073</b>
---	------------------------	--

# ILS or LOC RWY 17

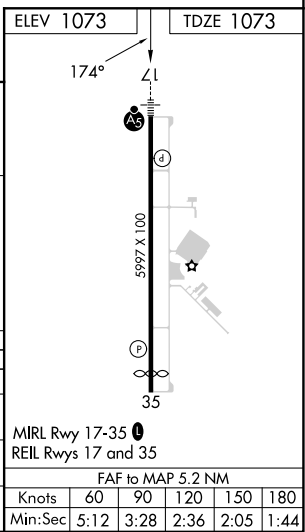
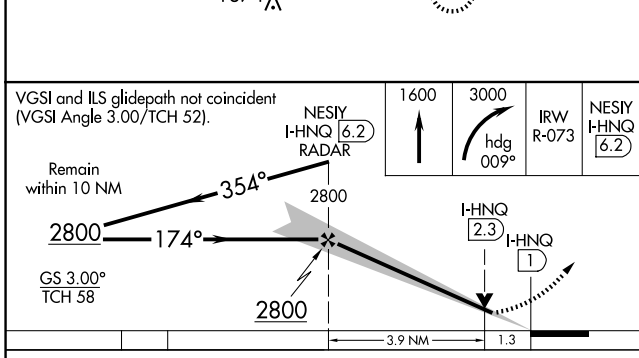
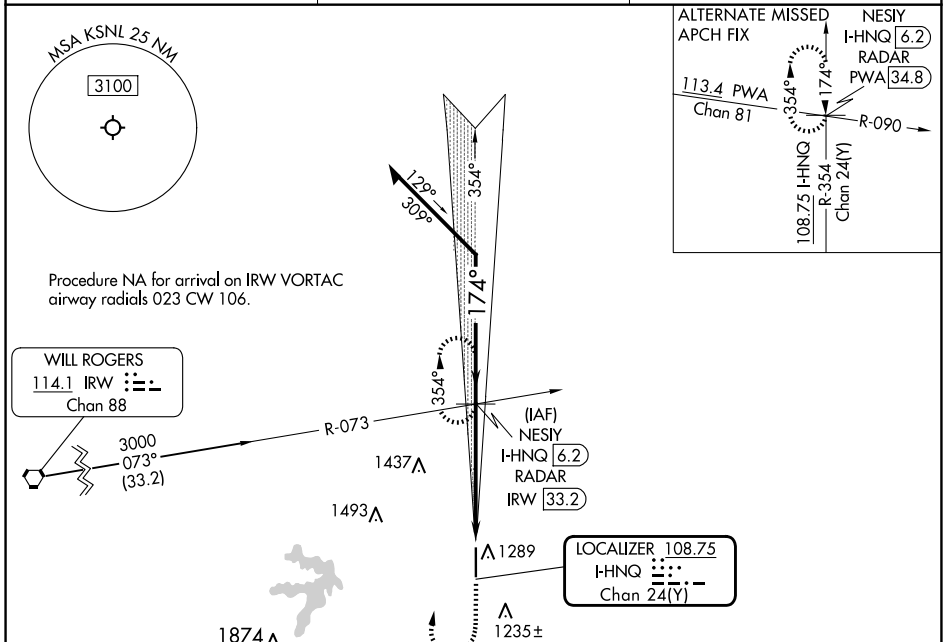
SHAWNEE RGNL (SNL)

DME or RADAR required.

**MALSR**

MISSED APPROACH: Climb to 1600 then climbing right turn to 3000 on heading 009° and IRW R-073 to NESIY/I-HNQ 6.2 DME/RADAR and hold, continue climb-in-hold to 3000.

AWOS-3PT <b>118.275</b>	OKE CITY APP CON <b>120.45 288.325</b>	UNICOM <b>122.7 (CTAF)</b>
----------------------------	---	-------------------------------



CATEGORY	A	B	C	D
S-ILS 17	1273-½ 200 (200-½)			NA
S-LOC 17	1520-½	447 (500-½)	1520-⅞ 447 (500-⅞)	NA
CIRCLING	1600-1 527 (600-1)		1640-1½ 567 (600-1½)	NA

SC-1, 14 MAY 2026 to 11 JUN 2026

SC-1, 14 MAY 2026 to 11 JUN 2026