

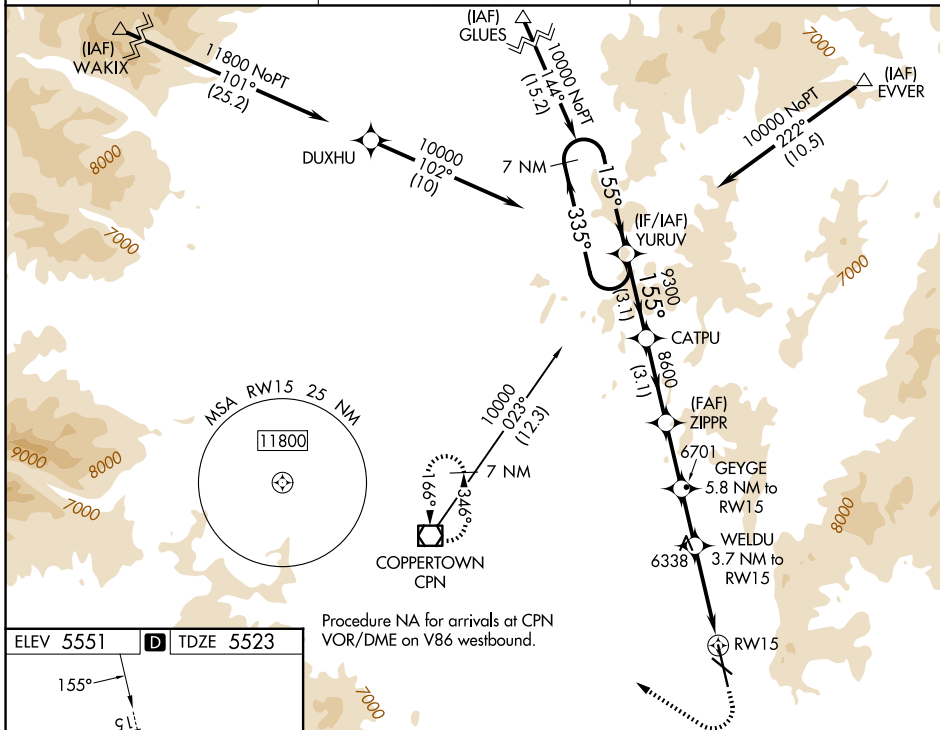
WAAS CH <b>56341</b> <b>W15A</b>	APP CRS <b>155°</b>	Rwy Ldg TDZE Apt Elev	<b>9000</b> <b>5523</b> <b>5551</b>
--	------------------------	-----------------------------	---

# RNAV (GPS) RWY 15

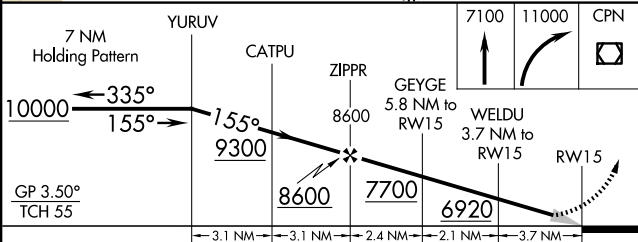
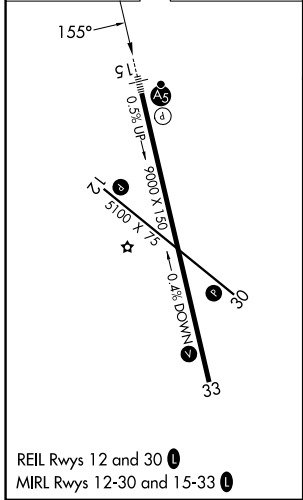
BERT MOONEY (BTM)

RNP APCH - GPS.	MALSRL	MISSED APPROACH: (Do not exceed 190K until 7100) Climb to 7100 then climbing right turn to 11000 direct CPN VOR/DME and hold, continue climb-in-hold to 11000. *Missed approach requires minimum climb of 365 feet per NM to 8700.
-----------------	--------	--

ASOS <b>135.175</b>	SALT LAKE CENTER <b>132.4 338.3</b>	UNICOM <b>123.0</b> (CTAF) <b>0</b>
------------------------	--	--



ELEV 5551	<b>D</b>	TDZE 5523
-----------	----------	-----------



CATEGORY	A	B	C	D
LPV DA	6281-1/8 758 (800-1/8)			
LPV DA*	5825-1/2 302 (300-1/2)			
LNAV MDA	6780-3/4 1257 (1300-3/4)	6780-1 1257 (1300-1)	6780-3 1257 (1300-3)	7120-3 1569 (1600-3)
CIRCLING	6780-1/4 1229 (1300-1/4)		7060-3 1509 (1600-3)	7120-3 1569 (1600-3)

NW-1, 14 MAY 2026 to 11 JUN 2026

NW-1, 14 MAY 2026 to 11 JUN 2026