

(FAHLZ1.FAHLZ) 25331

FAHLZ ONE DEPARTURE (RNAV)

AL-590 (FAA)

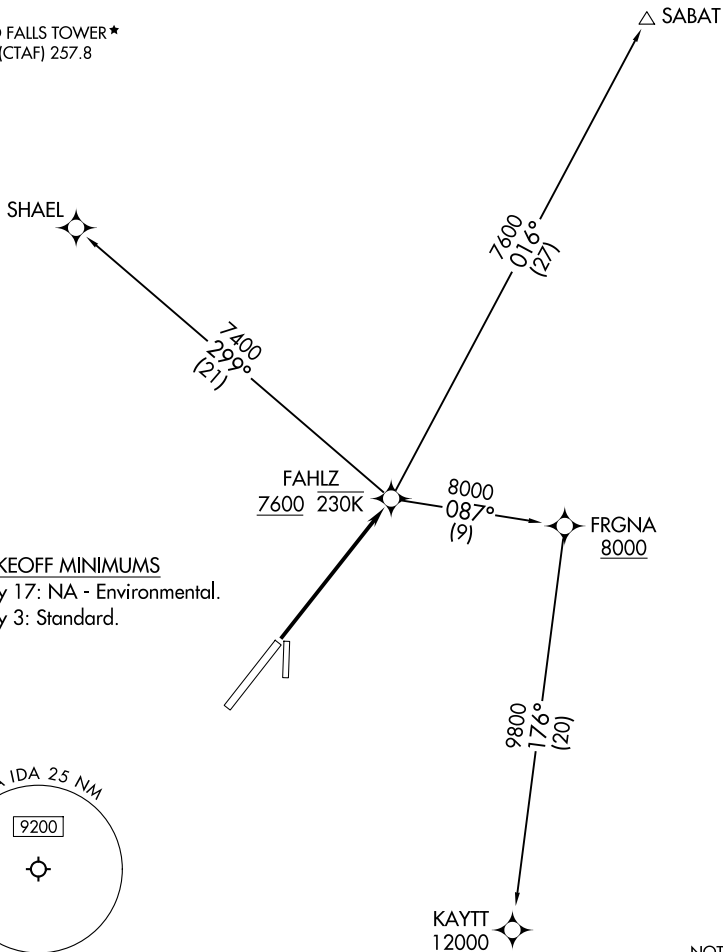
IDAHO FALLS RGNL (IDA)
IDAHO FALLS, IDAHO

SALT LAKE CENTER
128.35 239.25
CLNC DEL
121.7
GND CON
121.7
IDAHO FALLS TOWER ★
118.5 (CTAF) 257.8

RNAV 1 - DME/DME/IRU or GPS.

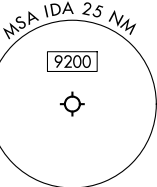
RADAR required for non-GPS equipped aircraft.

**TOP ALTITUDE:
ASSIGNED BY ATC**



TAKEOFF MINIMUMS

Rwy 17: NA - Environmental.
Rwy 3: Standard.



NOTE: Chart not to scale.

DEPARTURE ROUTE DESCRIPTION

TAKEOFF RUNWAY 3: Climb direct to cross FAHLZ at or above 7600 at or below 230K, then on transition. Maintain ATC assigned altitude. Expect filed altitude 10 minutes after departure.

KAYTT TRANSITION (FAHLZ1.KAYTT)

SABAT TRANSITION (FAHLZ1.SABAT)

SHAEL TRANSITION (FAHLZ1.SHAEL)

FAHLZ ONE DEPARTURE (RNAV)

(FAHLZ1.FAHLZ) 27NOV25

IDAHO FALLS, IDAHO
IDAHO FALLS RGNL (IDA)

NW-1, 14 MAY 2026 to 11 JUN 2026

NW-1, 14 MAY 2026 to 11 JUN 2026