

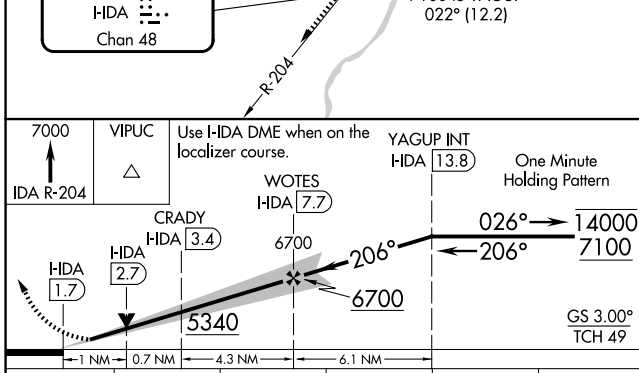
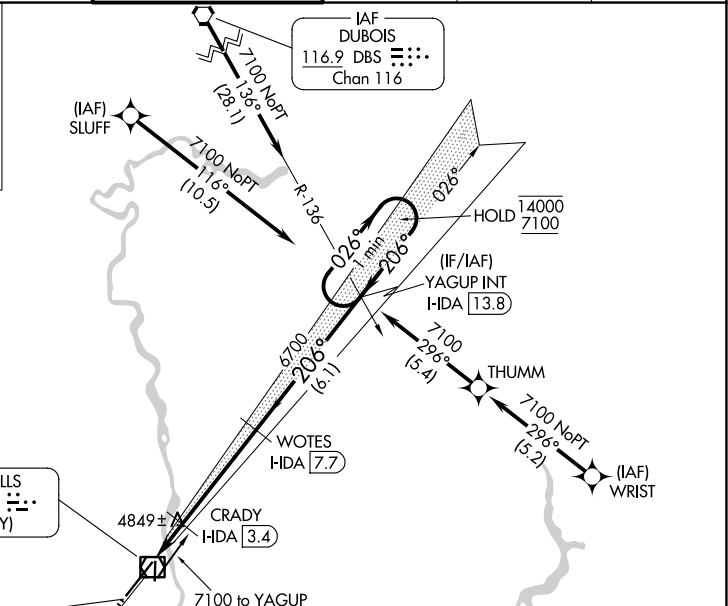
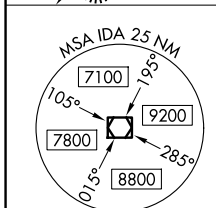
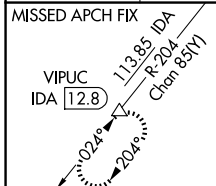
LOC/DME I-IDA 111.1 Chan 48	APP CRS 206°	Rwy Ldg 9002	TDZE 4735
		Apt Elev 4744	

ILS or LOC RWY 21

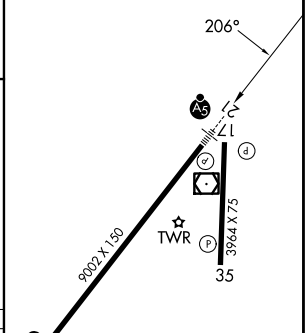
IDAHO FALLS RGNL (IDA)

RNP APCH - GPS. From SLUFF or WRIST.	MALSR 	MISSED APPROACH: Climb to 7000 on IDA VOR/DME R-204 to VIPUC/12.8 DME and hold.
DME required.		
<p>⚠ Circling to Rwy 35 NA at night. For inop ALS, increase S-ILS 21 Cat E visibility to RVR 4000, and S-LOC 21 Cat C, D, E visibility to RVR 5500.</p>		

ATIS 135.325	SALT LAKE CENTER 128.35 239.25	IDAHO FALLS TOWER* 118.5 (CTAF) 0 257.8	GND CON 121.7	GCO 121.725	UNICOM 122.95
------------------------	--	---	-------------------------	-----------------------	-------------------------



ELEV 4744	D TDZE 4735
-----------	--------------------



CATEGORY	A	B	C	D	E
S-ILS 21	4935/24		200 (200-½)		
S-LOC 21	5120/24	385 (400-½)	5120/35 385 (400-¾)		
CIRCLING	5200-1 456 (500-1)	5300-1 556 (600-1)	5400-1¾ 656 (700-1¾)	5420-2¼ 676 (700-2¼)	5420-2½ 676 (700-2½)

REIL Rwy 3 **1**
HIRL Rwy 3-21 **1**
MIRL Rwy 17-35

NW-1, 14 MAY 2026 to 11 JUN 2026

NW-1, 14 MAY 2026 to 11 JUN 2026