


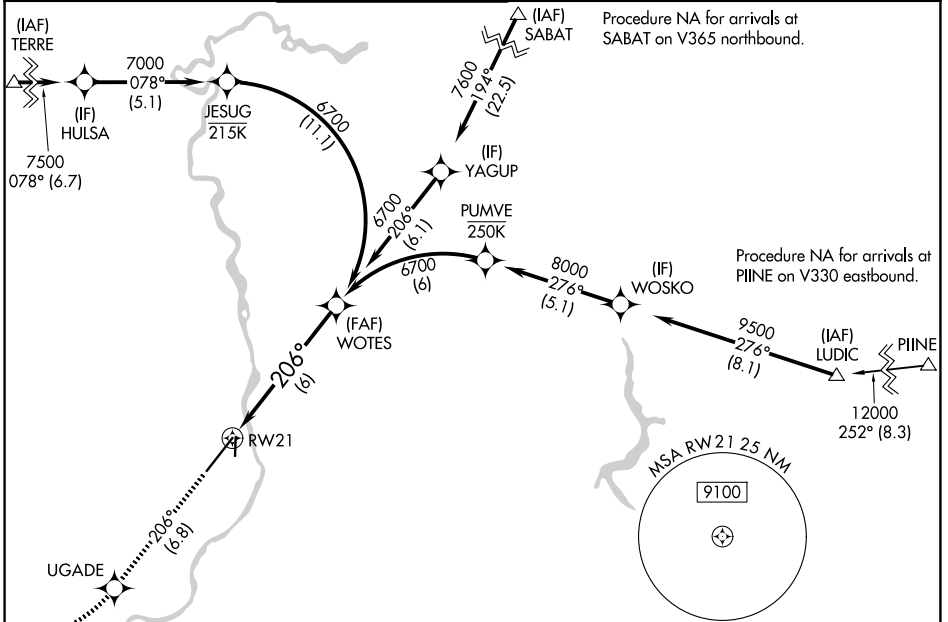
APP CRS	Rwy Ldg	<b>9002</b>
<b>206°</b>	TDZE	<b>4735</b>
	Apt Elev	<b>4744</b>

# RNAV (RNP) Z RWY 21

IDAHO FALLS RGNL (IDA)

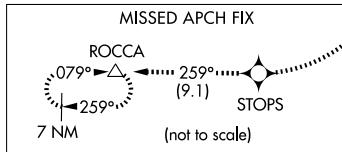
RNP AR APCH-GPS.		IDaho Falls Tower ★		GND CON	CLNC DEL	GCO	UNICOM
<p>▼ For uncompensated Baro-VNAV systems, procedure NA below -27°C or above 54°C. For inop ALS, increase RNP 0.11 visibility all Cats to RVR 4500.</p>		<p><b>118.5 (CTAF) 0 257.8</b></p>		<b>121.7</b>	<b>121.7</b>	<b>121.725</b>	<b>122.95</b>
ATIS	SALT LAKE CENTER						
<b>135,325</b>	<b>128.35 239.25</b>						

MALSR  MISSED APPROACH: Climb to 7500 on track 206° to UGADE, right turn to STOPS, and on track 259° to ROCCA and hold.

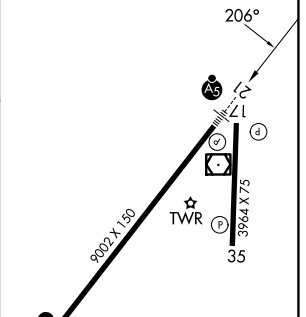
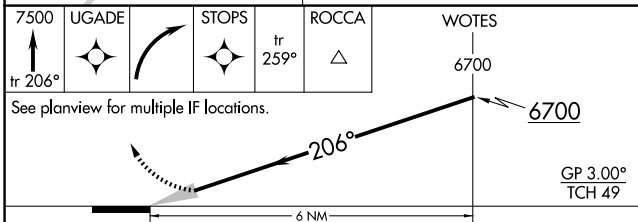


NW-1, 14 MAY 2026 to 11 JUN 2026

NW-1, 14 MAY 2026 to 11 JUN 2026



ELEV 4744	<b>D</b> TDZE 4735
-----------	--------------------



CATEGORY	A	B	C	D
RNP 0.11 DA		5011/24	276 (300-½)	
RNP 0.30 DA		5120/35	385 (400-¾)	

**AUTHORIZATION REQUIRED**

REIL Rwy 3 **1**  
 HIRL Rwy 3-21 **1**  
 MIRL Rwy 17-35