

NDB-B

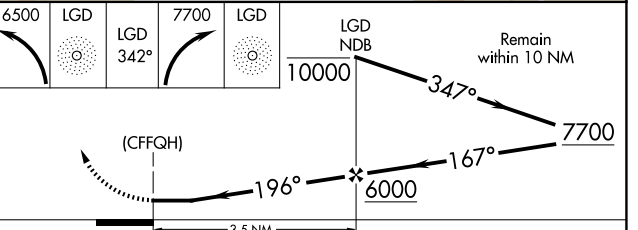
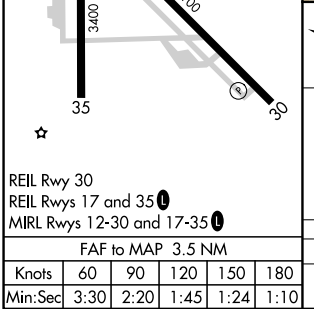
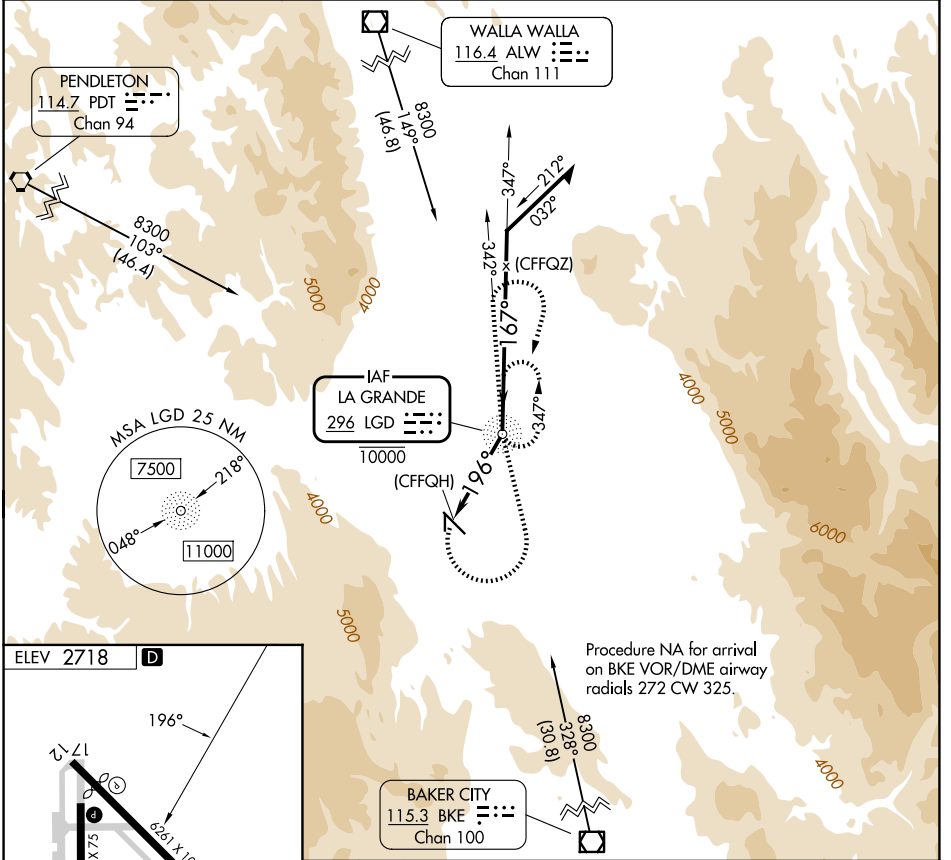
LA GRANDE/UNION COUNTY (LGD)

NDB LGD 296	APP CRS 196°	Rwy Ldg TDZE Apt Elev N/A N/A 2718
-----------------------	------------------------	------------------------------------------------------------------------

NA Circling NA for Cat C southwest of Rwy 12-30.
-1.6°C

MISSED APPROACH: Climbing left turn to 6500 direct LGD NDB and on bearing 342° from LGD NDB, then climbing right turn to 7700 direct LGD NDB and hold.

AWOS-3PT 135.075	SEATTLE CENTER 132.6 269.35	UNICOM 122.8 (CTAF)
----------------------------	---------------------------------------	-------------------------------



FAF to MAP 3.5 NM						
Knots	60	90	120	150	180	
Min:Sec	3:30	2:20	1:45	1:24	1:10	
CATEGORY	A		B		C	D
CIRCLING	4600-1¼ 1882 (1900-1¼)		4600-1½ 1882 (1900-1½)		4600-3 1882 (1900-3)	NA

NW-1, 14 MAY 2026 to 11 JUN 2026

NW-1, 14 MAY 2026 to 11 JUN 2026