

WAAS CH <b>66000</b> <b>W17A</b>	APP CRS <b>166°</b>	Rwy Ldg <b>3400</b> TDZE <b>2714</b> Apt Elev <b>2718</b>
--	------------------------	---

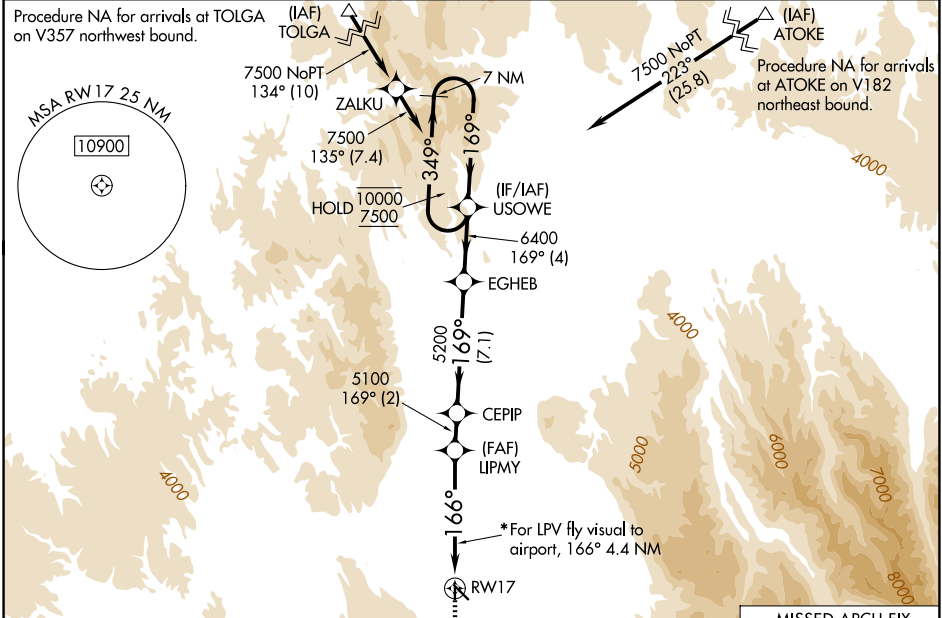
# RNAV (GPS) RWY 17

LA GRANDE/UNION COUNTY (L.G.D)

RNP APCH - GPS.  
 ⚠ Circling NA for Cats C and D southwest of Rwy 12-30.  
 ⚠ Fly visual to airport authorized during day only.  
 ❄ -16°C \*Day visibility minimums 3 SM.

MISSED APPROACH: Climb to 4600 then climbing left turn to 9000 direct NUDEQ and hold, continue climb-in-hold to 9000.

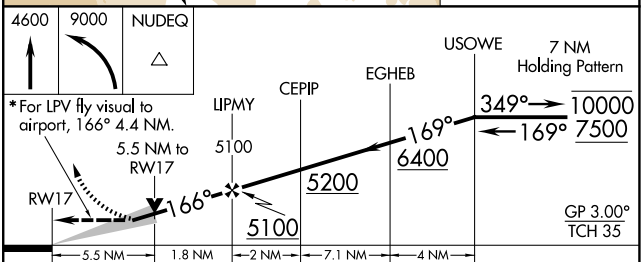
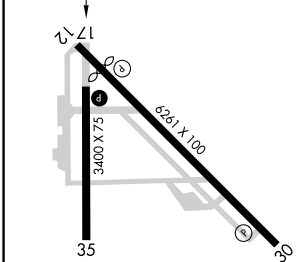
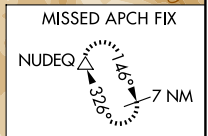
AWOS-3PT <b>135.075</b>	SEATTLE CENTER <b>132.6 269.35</b>	UNICOM <b>122.8 (CTAF)</b>
----------------------------	---------------------------------------	-------------------------------



NW-1, 14 MAY 2026 to 11 JUN 2026

NW-1, 14 MAY 2026 to 11 JUN 2026

ELEV 2718	<b>D</b>	TDZE 2714
-----------	----------	-----------



CATEGORY	A	B	C	D
LPV DA*	4157-6 1443 (1500-6)			
LNAV MDA	4540-1¼ 1826 (1900-1½)	4540-1½ 1826 (1900-1½)	4560-3 1846 (1900-3)	4580-3 1866 (1900-3)
CIRCLING	4540-1¼ 1822 (1900-1¼)	4540-1½ 1822 (1900-1½)	4560-3 1842 (1900-3)	4580-3 1862 (1900-3)

REIL Rwy 30  
 REIL Rwy 17 and 35  
 MRL Rwy 12-30 and 17-35